



Winkworth
for every step...



Winkworth
for every step...



Winkworth
for every step...

HALL LANE, HENDON, LONDON, NW4
£750,000 FREEHOLD

STUNNING FOUR BEDROOM SEMI DETACHED RESIDENCE

Kingsbury | 020 8204 0000 | kingsbury@winkworth.co.uk



for every step...

winkworth.co.uk



Winkworth
for every step...

Welcome to this charming double-fronted, four-bedroom semi-detached family home, perfectly positioned on a highly sought-after residential road in Hendon. This beautifully maintained property exudes elegance and offers an abundance of living space, ideal for modern family living. Upon entering, you are greeted by a grand hallway that flows seamlessly into two generous reception rooms, each offering a unique ambiance for both formal entertaining and relaxed gatherings. The heart of the home is the beautifully crafted kitchen, adorned, which harmoniously adjoins with a spacious dining room. Additionally, the ground floor features a versatile study, and a cleverly appointed W/C. Ascend to the first floor to discover four well-proportioned bedrooms, each designed to provide a tranquil retreat. The master suite boasts the luxury of an en-suite bathroom, whilst the remaining bedrooms share a contemporary family bathroom. The external features of this property are equally impressive. A lush, well-maintained rear garden offers a private sanctuary. The front driveway provides ample parking. Additionally, there is exciting potential to extend the property (STPP), allowing for future customization to suit your needs. This remarkable home must be seen to be truly appreciated. An internal viewing is essential.



Winkworth
for every step...



Winkworth
for every step...

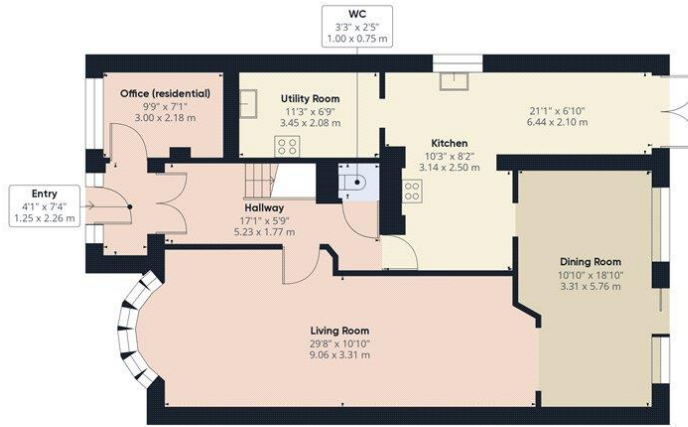
Winkworth

for every step...

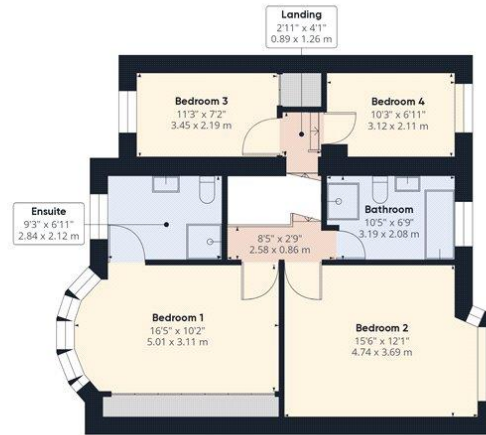


Winkworth

for every step...



Ground Floor



Floor 1

Approximate total area⁽¹⁾
 1805.43 ft²
 167.73 m²

(1) Excluding balconies and terraces

While every attempt has been made to ensure accuracy, all measurements are approximate, not to scale. This floor plan is for illustrative purposes only.

GIRAFFE360

This floorplan is for illustration purposes only and is not to scale. The position and size of doors, windows, appliances and other features are approximate.



Tenure: Freehold

Council Tax Band: F

Where no figures are shown, we have been unable to ascertain the information. All figures that are shown were correct at the time of printing.

Kingsbury | 020 8204 0000 | kingsbury@winkworth.co.uk

Winkworth

for every step...

winkworth.co.uk

Winkworth wishes to inform prospective buyers and tenants that these particulars are a guide and act as information only. All our details are given in good faith and believed to be correct at the time of printing but they don't form part of an offer or contract. No Winkworth employee has authority to make or give any representation or warranty in relation to this property. All fixtures and fittings, whether fitted or not are deemed removable by the vendor unless stated otherwise and room sizes are measured between internal wall surfaces, including furnishings.