



## NEVILLE COURT, ST JOHN'S WOOD, LONDON, NW8 £2,795,000 LEASEHOLD

A beautifully presented interior designed three-bedroom apartment situated on the first-floor of this popular secure portered building located on Abbey Road. The apartment benefits from a double reception room with French doors on to a private balcony and air-conditioning. All bedrooms have bespoke fitted wardrobes in addition to the principal bedroom, which further benefits from direct access to a second private balcony, the property also has under floor heating and doubled glazed windows. Neville Court is located almost opposite the famous Abbey Road Studios and is less than half a mile away from the newly landscaped high street, Regent's Park and Lord's Cricket Ground.

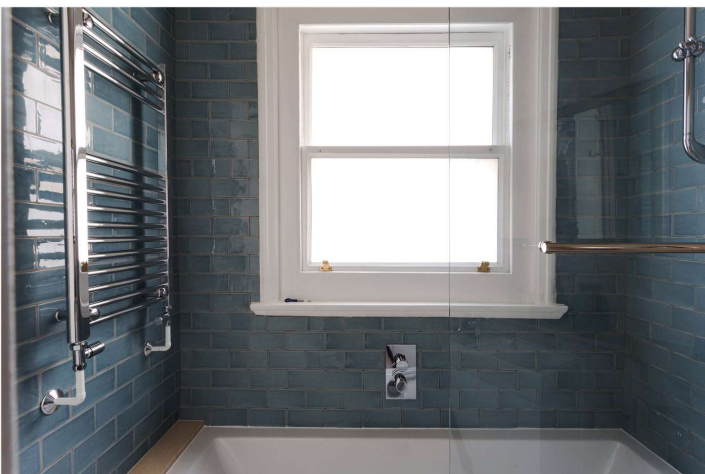
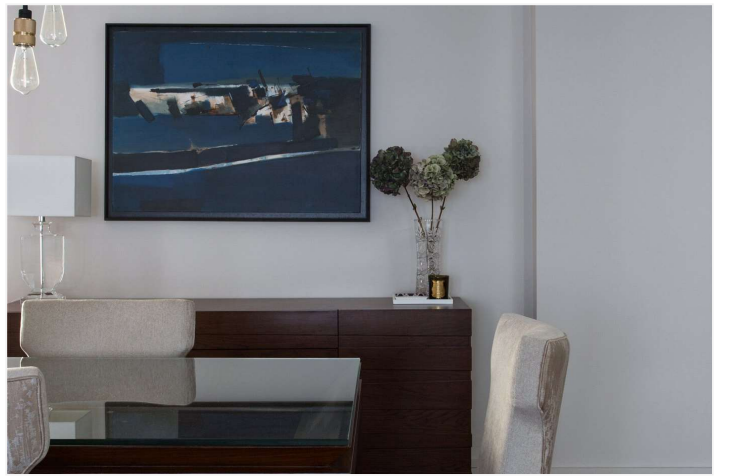
Three Bedrooms (Two with En-suites) | Three Bathrooms | Reception Room | Kitchen | Two Balconies | Entrance Phone | Passenger Lift | Portage | Leasehold

View our virtual tour here: <https://youtu.be/3LpLtSWrFYg>

**Winkworth**

for every step...

[winkworth.co.uk/st-johns-wood](https://www.winkworth.co.uk/st-johns-wood)

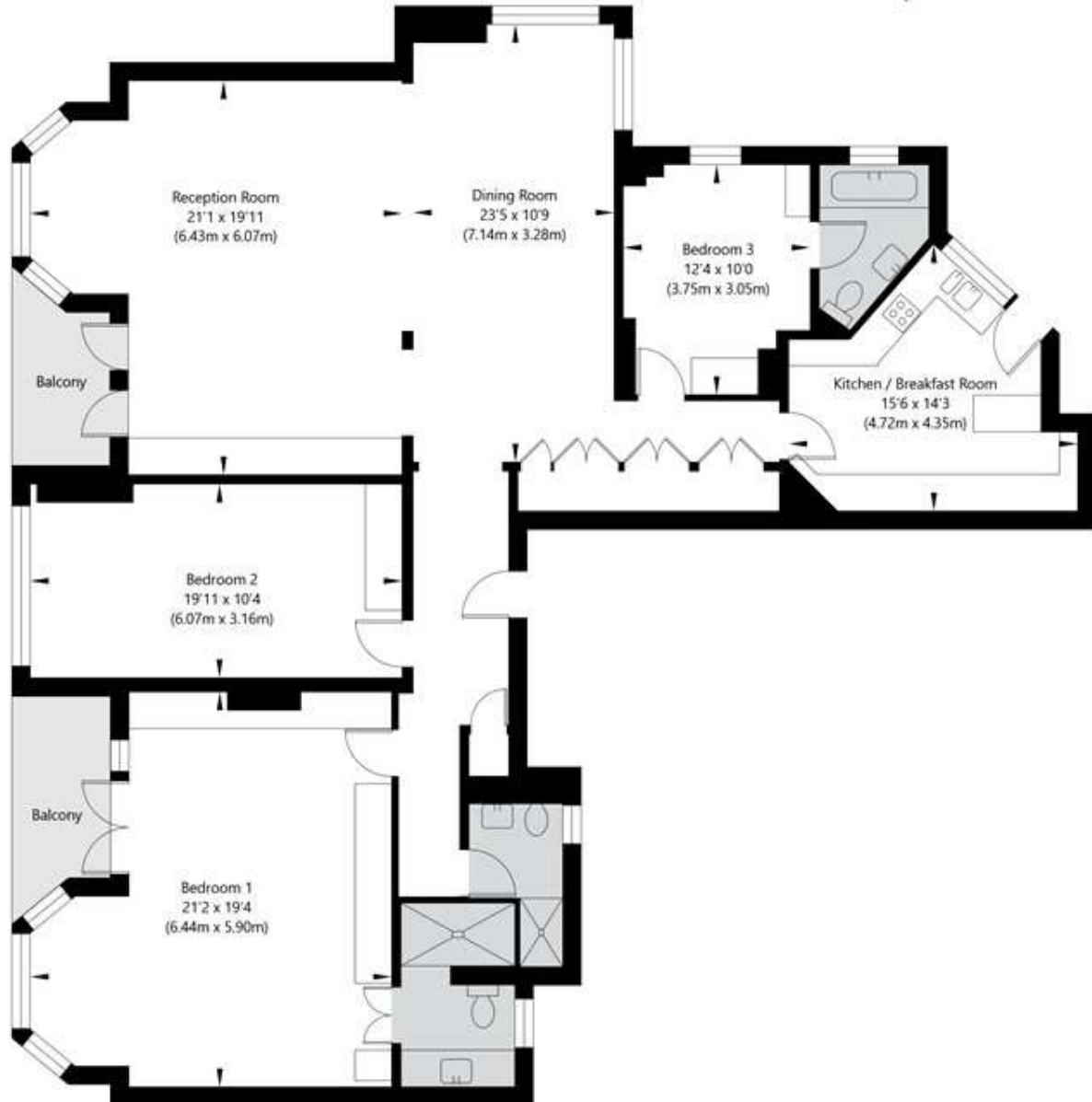


# Neville Court, Abbey Road, NW8 9DB

First Floor

GROSS INTERNAL FLOOR AREA EXCLUDING BALCONIES  
APPROX. 174.00 SQ M / 1875 SQ FT

GROSS INTERNAL FLOOR AREA INCLUDING BALCONIES  
180.80 SQ M / 1946 SQ FT

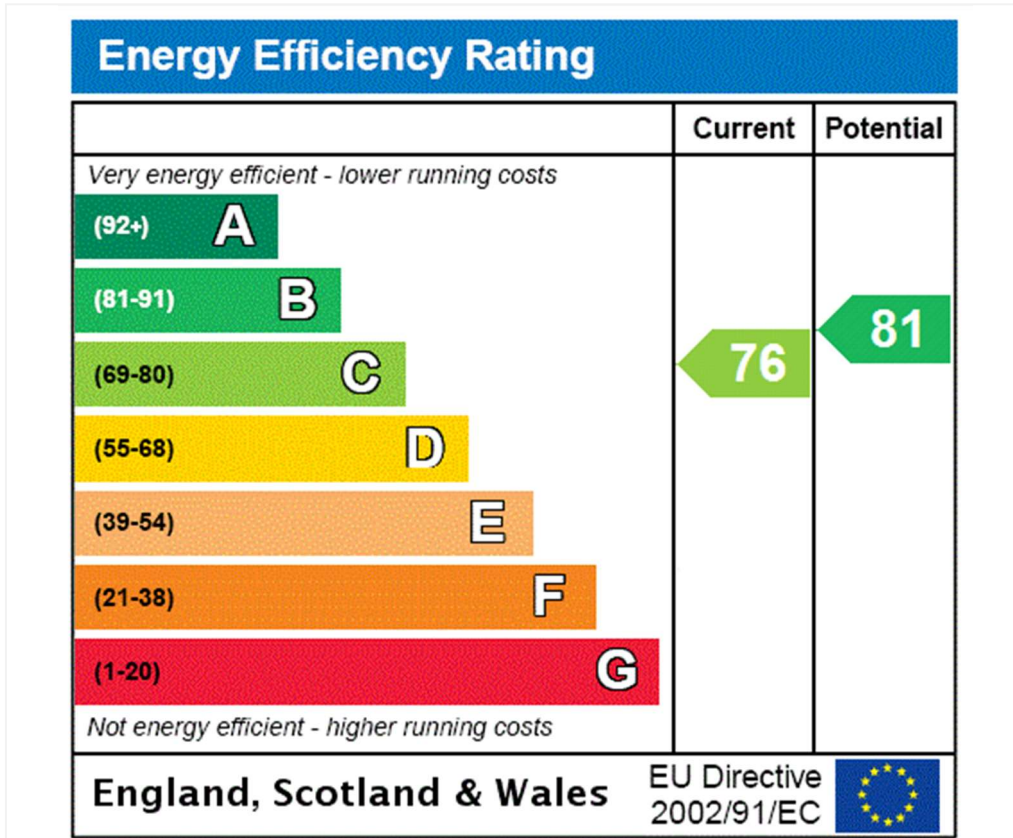


GROSS INTERNAL FLOOR AREA EXCLUDING BALCONIES  
APPROX. 174.00 SQ M / 1875 SQ FT

GROSS INTERNAL FLOOR AREA INCLUDING BALCONIES  
180.80 SQ M / 1946 SQ FT

THIS FLOOR PLAN IS FOR ILLUSTRATIVE PURPOSES ONLY AND  
SHOULD BE USED FOR THIS PURPOSE BY PROSPECTIVE APPLICANTS AS ITS NOT TO SCALE.

(c) AMBERSHORE PIX LIMITED / PHOTO - VIDEO - FLOOR PLANS / 0800 999 1577 / WWW.AMERSHOREPIX.CO.UK



**Tenure:** Leasehold

**Term:** Expires - 01/01/2969

**Service Charge:** £13,203.56 per annum

**Ground Rent:** £0 Annually (subject to increase)

**Council Tax Band:** G

Where no figures are shown, we have been unable to ascertain the information. All figures that are shown were correct at the time of printing.

Where no figures are shown, we have been unable to ascertain the information. All figures that are shown were correct at the time of printing. These particulars are not an offer or contract, nor part of one. You should not rely on statements by Winkworth in the particulars or by word of mouth or in writing "information" as being factually accurate about the property, its condition or its value. Winkworth does not have any authority to make any representations about the property, and accordingly any information given is entirely without responsibility on the part of the agents, seller(s) or lessor(s). These particulars are prepared on the basis of the information supplied by our client and are a rough guide for information only. The photographs show only certain parts of the property. We are not able to check all of the information and therefore are unable to guarantee accuracy. All interested parties are therefore advised to undertake all necessary inspections and checks that they deem appropriate. Where displayed, the square footage is taken from the floor plans, which are created by an independent supplier. These measurements are approximate and included for illustrative purposes only. The measurements may vary. Winkworth does not make any representation as to the accuracy of these measurements and you should seek to verify them for yourself. Winkworth accept no liability for any loss you may suffer if you rely on these measurements. All fixtures and fittings, whether fitted or not are deemed removable by the vendor unless stated. Any reference to alterations to, or use of, any part of the property does not mean that any necessary planning, building regulations or other consent has been obtained. Amenities and appliances have not been tested

St John's Wood | 103-104 St. Johns Wood Terrace, London, NW8 6PL | 020 7586 7001 |



for every step...

[winkworth.co.uk/st-johns-wood](http://winkworth.co.uk/st-johns-wood)

Winkworth wishes to inform prospective buyers and tenants that these particulars are a guide and act as information only. All our details are given in good faith and believed to be correct at the time of printing but they don't form part of an offer or contract. No Winkworth employee has authority to make or give any representation or warranty in relation to this property. All fixtures and fittings, whether fitted or not are deemed removable by the vendor unless stated otherwise and room sizes are measured between internal wall surfaces, including furnishings.