



SOUTHFIELD ROAD, LONDON, W4
£675,000 LEASEHOLD

A HANDSOME THREE BEDROOM EDWARDIAN MAISONETTE OFFERED WITH NO FORWARD CHAIN

Chiswick | 020 8994 7096 | chiswick@winkworth.co.uk

Winkworth

for every step...

winkworth.co.uk



DESCRIPTION:

Winkworth are delighted to offer this stunning three bedroom Edwardian apartment situated on the borders of Bedford Park. The property is laid out over the first and second floors of this handsome purpose-built property and comprises of own private entrance with stairs leading to the first floor landing with rooms off. A fabulous reception room to the front elevation with feature fireplace and sash windows, two bedrooms, a bathroom, open-plan kitchen/dining room and a separate handy utility room with lots of space for storage.

On the second floor is the master suite with ensuite shower room and ample eaves storage.

The property is positioned at the top of the Avenue which leads onto Turnham Green and is roughly a 0.7 miles walk to the station and restaurants, shops, bars and cafes of Turnham Green.

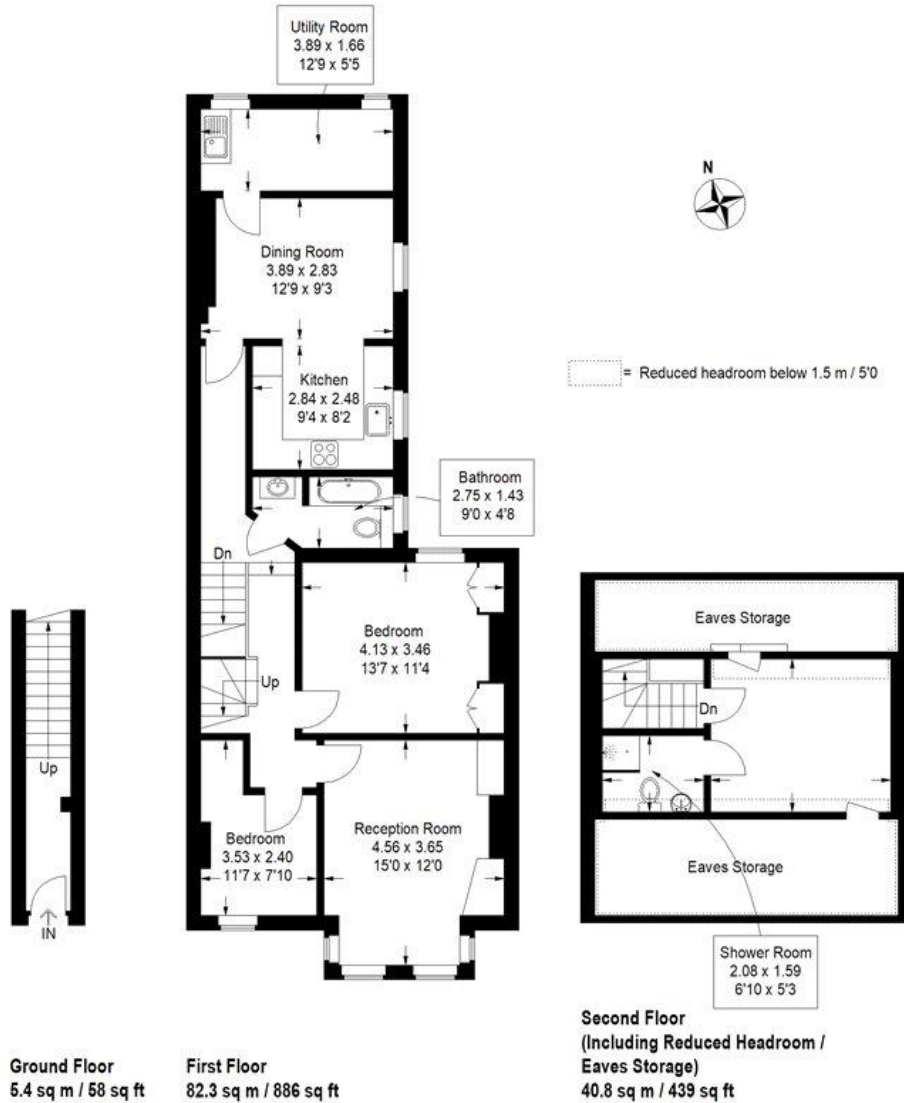
ACCOMMODATION

- First and second floor flat
- Three bedrooms
- Two bathrooms
- Bay fronted reception
- Dining room leading to kitchen
- Separate utility room
- Well presented
- No forward chain
- Low outgoings



Southfield Road

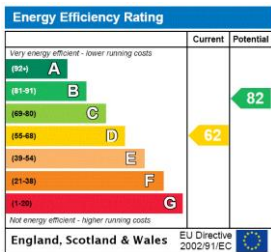
Approximate Gross Internal Area
 (Excluding Reduced Headroom / Eaves Storage)
 105.3 sq m / 1134 sq ft
 Reduced Headroom / Eaves Storage = 25.3 sq m / 272 sq ft
 Total = 130.6 sq m / 1406 sq ft



Winkworth

Illustration for identification purposes only, measurements are approximate, not to scale.
 FloorplansUsketch.com © 2021 (ID 791018)

This floorplan is for illustration purposes only and is not to scale. The position and size of doors, windows, appliances and other features are approximate.



Chiswick | 020 8994 7096 | chiswick@winkworth.co.uk



for every step...

winkworth.co.uk

Winkworth wishes to inform prospective buyers and tenants that these particulars are a guide and act as information only. All our details are given in good faith and believed to be correct at the time of printing but they don't form part of an offer or contract. No Winkworth employee has authority to make or give any representation or warranty in relation to this property. All fixtures and fittings, whether fitted or not are deemed removable by the vendor unless stated otherwise and room sizes are measured between internal wall surfaces, including furnishings.