



TWYFORD HOUSE, FLAT G2, TWYFORD HOUSE, LONDON, N15
OIEO £275,000 LEASEHOLD

**A CHARMING ONE-BEDROOM, GROUND FLOOR
FLAT WITH PRIVATE OUTDOOR SPACE.**

Stoke Newington | | stokenewington@winkworth.co.uk

Winkworth

winkworth.co.uk

See things differently



DESCRIPTION:

Cash Buyers Only

A recently-renovated apartment set within Twyford House, a purpose built development nestled at the heart of N15. This delightful one bedroom flat offers a perfect blend of modern and urban living, making it an ideal choice for young professionals or first time buyers.

The living area is flooded with an abundance of natural light due to the south-easterly facing windows and door providing access to a well-proportioned private patio. The outdoor space is versatile and lends perfectly to entertaining guests as there is ample space for outdoor furniture or al fresco dining. Off of the living area is the kitchen fitted with both sleek and stylish storage cupboards and appliances. The generous double bedroom spans the length of the flat and offers plentiful space for storage, with a modern-fitted 3-piece suite with walk-in shower, wash hand basin and WC just across the hallway. A private, off-street parking space is also available via the local council.

Located in a vibrant and highly-sought neighbourhood, there are a number of amenities such as cafes, shops and transport links. Twyford House sits just 0.5 miles away from Seven Sisters Tube Station, offering connections to the City in less than half an hour, and a variety of Bus links can be found nearby.

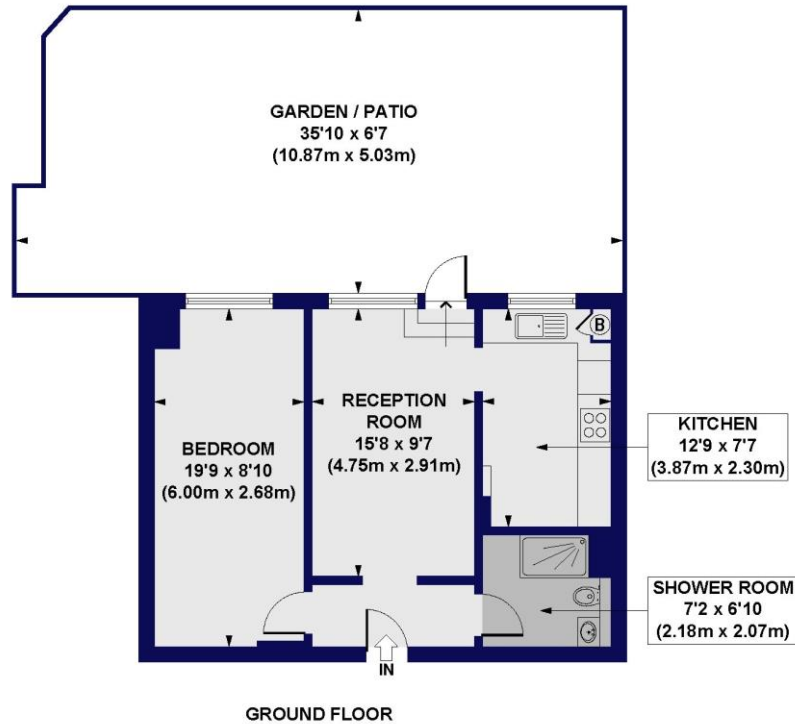
Any associated charges including, but not limited to, service charge, ground rent and sinking funds outlined in the marketing material is an approximation calculated using information provided by and described by the client at the time of instruction. The actual cost may be subject to change and therefore we recommend all interested parties carry out their own enquiries.

Winkworth



Winkworth

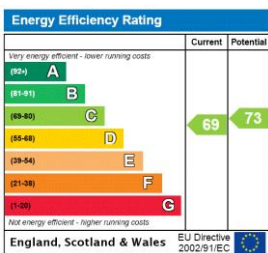
Twyford House, Chisley Road, N15
 Approx. Gross Internal Floor Area 529 sq. ft / 49.14 sq. m



All measurements of walls, doors, windows, fittings and appliances, including their size and location, are shown as standard sizes and do not constitute any warranty or representation by the seller, their agent or CP Creative. Any intending purchaser must satisfy himself by inspection or otherwise as to the correctness of the information contained in these plans. This plan is for illustrative purposes only and should be used as such by any prospective purchasers.



This floorplan is for illustration purposes only and is not to scale. The position and size of doors, windows, appliances and other features are approximate.



Stoke Newington | | stokenewington@winkworth.co.uk



winkworth.co.uk

See things differently

Winkworth wishes to inform prospective buyers and tenants that these particulars are a guide and act as information only. All our details are given in good faith and believed to be correct at the time of printing but they don't form part of an offer or contract. No Winkworth employee has authority to make or give any representation or warranty in relation to this property. All fixtures and fittings, whether fitted or not are deemed removable by the vendor unless stated otherwise and room sizes are measured between internal wall surfaces, including furnishings.