



BRENCHLEY GARDENS, FOREST HILL, LONDON, SE23
£400,000 LEASEHOLD

THIS FANTASTIC, LARGE, MODERN TWO DOUBLE BEDROOM APARTMENT IS SITUATED IN A QUIET LOCATION CLOSE TO NUNHEAD AND EAST DULWICH.

DESCRIPTION:

This fantastic, large, modern two double bedroom apartment is situated in a quiet location close to Nunhead and East Dulwich. The property offers two good double bedrooms, a large reception, a modern kitchen and bathroom. It is within close proximity to local schools, amenities and transport links into Central London. Peckham Rye Common is just on the doorstep as are the bars and restaurants on Forest Hill Road and Nunhead Green. It is also within walking distance to Honor Oak, Crofton Park and Brockley Overground train stations.

AT A GLANCE

- Two Double Bedrooms
- Second Floor Flat
- Large Reception
- Modern Bathroom & Kitchen
- Chain Free
- Central Location

Dulwich | 020 8299 2722 | dulwich@winkworth.co.uk

Tenure Share of Freehold approx. 90 yrs remaining | Council Tax Band B – London Borough of Southwark | Service Charge £1800 pa | Ground Rent £10 pa

winkworth.co.uk

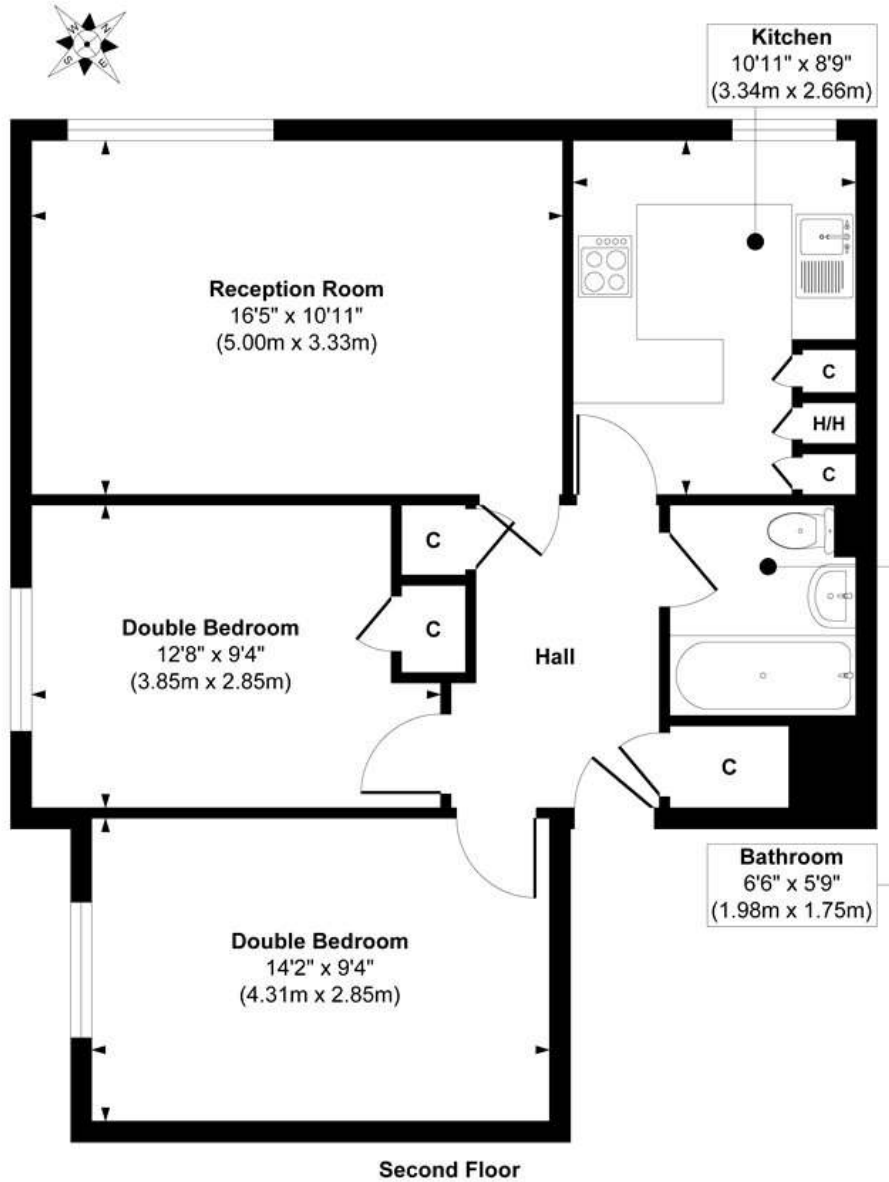
Winkworth

See things differently



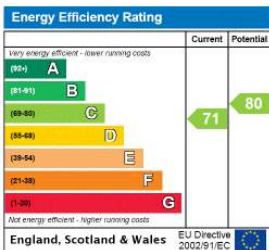


Brenchley Gardens



Approx. Gross Internal Floor Area 661 sq. ft / 61.44 sq. m
Illustration for identification purposes only, measurements are approximate, not to scale.
Produced by Elements Property

This floorplan is for illustration purposes only and is not to scale. The position and size of doors, windows, appliances and other features are approximate.



Dulwich | 020 8299 2722 | dulwich@winkworth.co.uk



winkworth.co.uk

See things differently

Winkworth wishes to inform prospective buyers and tenants that these particulars are a guide and act as information only. All our details are given in good faith and believed to be correct at the time of printing but they don't form part of an offer or contract. No Winkworth employee has authority to make or give any representation or warranty in relation to this property. All fixtures and fittings, whether fitted or not are deemed removable by the vendor unless stated otherwise and room sizes are measured between internal wall surfaces, including furnishings.