



DARRELL ROAD, EAST DULWICH, LONDON, SE22  
£1,150,000 FREEHOLD

AN EXCELLENT SIZED, BRIGHT FAMILY HOME  
SITUATED ON A QUIET RESIDENTIAL ROAD  
IN EAST DULWICH.

Dulwich | 020 8299 2722 | [dulwich@winkworth.co.uk](mailto:dulwich@winkworth.co.uk)

**Winkworth**

[winkworth.co.uk](http://winkworth.co.uk)

See things differently



## DESCRIPTION:

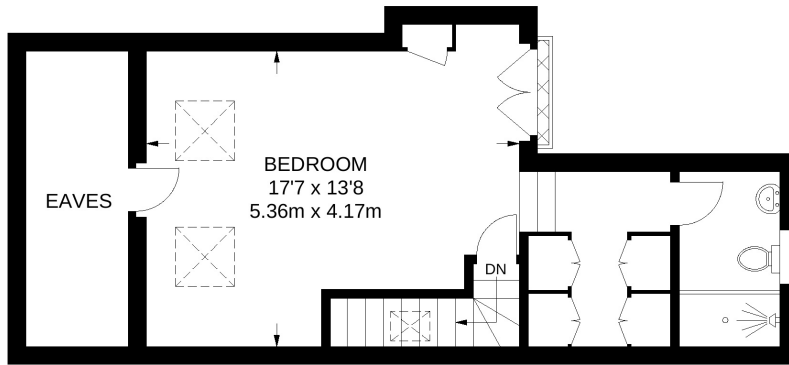
An excellent sized, bright family home situated on a quiet residential road in East Dulwich. This fantastic family home is offered to the market in immaculate condition comprising a large double reception with wood flooring, sash windows and original features. A large fully-fitted kitchen/diner to the rear, with doors leading out to a lovely West-facing sunny garden. The first floor comprises three large double bedrooms, including built in wardrobes in the largest of the three, tasteful décor and a large family bathroom. The loft has been fully extended in to a large master suite, complete with a walk-in wardrobe, large shower room and lovely bedroom. Primary school catchments are in abundance and the property is within easy access to Lordship Lane, with its extensive array of shops, bars and restaurants. Transport links are ideally located at East Dulwich station and Peckham Rye for the Overground.

## AT A GLANCE

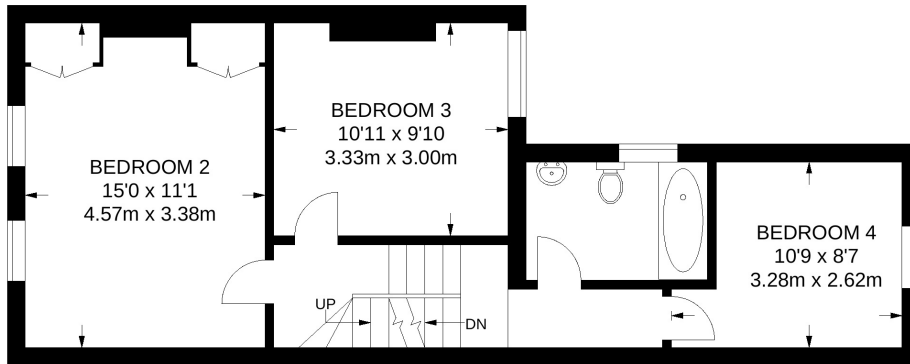
- Four bedrooms
- Two bathrooms
- Fully-fitted kitchen
- Landscaped garden
- Close to transport
- Fantastic condition



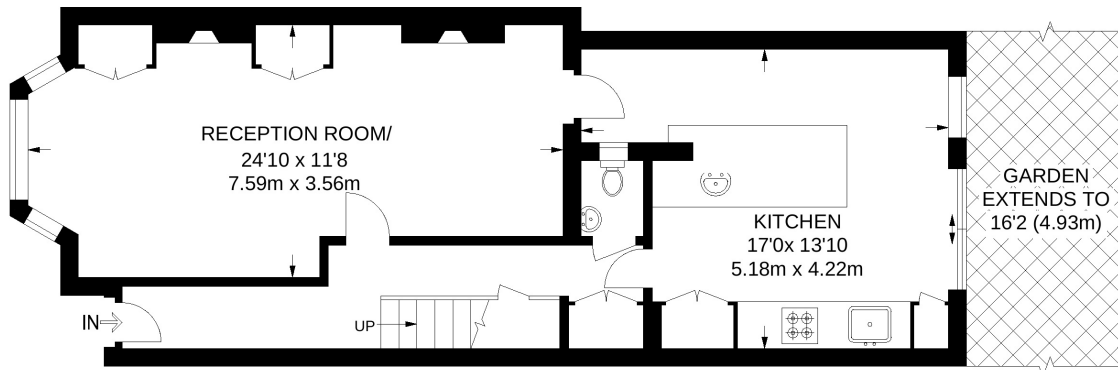




**SECOND FLOOR**  
425 SQ FT / 39.5 SQ M



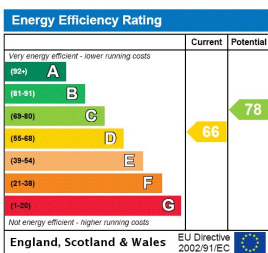
**FIRST FLOOR**  
503 SQ FT / 46.7 SQ M



**GROUND FLOOR**  
605 SQ FT / 56.2 SQ M

**APPROXIMATE GROSS INTERNAL AREA**  
1533 SQ FT / 142.4 SQ M

This floorplan is for illustration purposes only and is not to scale. The position and size of doors, windows, appliances and other features are approximate.



Dulwich | 020 8299 2722 | [dulwich@winkworth.co.uk](mailto:dulwich@winkworth.co.uk)



[winkworth.co.uk](http://winkworth.co.uk)

See things differently

Winkworth wishes to inform prospective buyers and tenants that these particulars are a guide and act as information only. All our details are given in good faith and believed to be correct at the time of printing but they don't form part of an offer or contract. No Winkworth employee has authority to make or give any representation or warranty in relation to this property. All fixtures and fittings, whether fitted or not are deemed removable by the vendor unless stated otherwise and room sizes are measured between internal wall surfaces, including furnishings.