



THE BROOKDALES, NW11
£799,000 LEASEHOLD

A STUNNING NEW DEVELOPMENT OF TOWNHOUSES LOCATED AT THE BROOKDALES, BELL LANE, NW11

Golders Green | 020 8458 8313 | goldersgreen@winkworth.co.uk

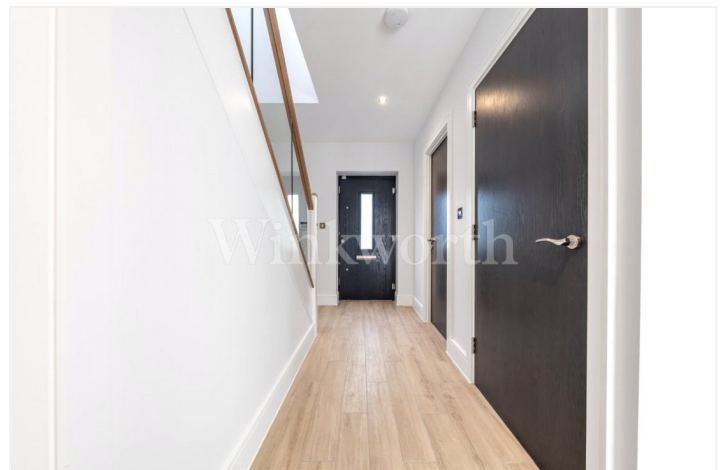


DESCRIPTION:

LAUNCHING SUNDAY 10TH SEPTEMBER - PLEASE CALL TO REGISTER YOUR INTEREST

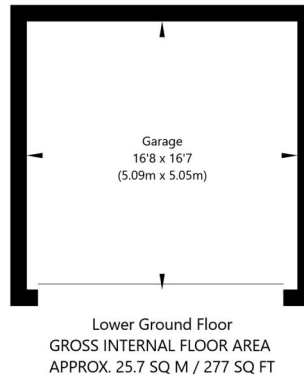
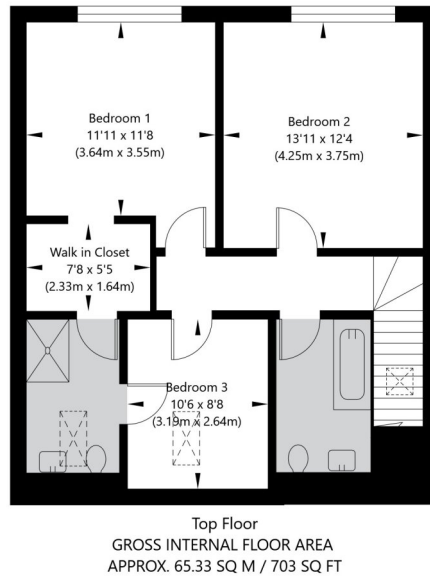
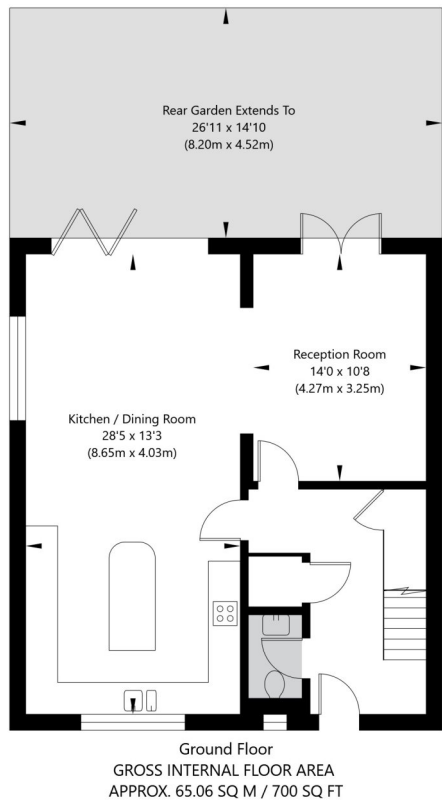
A stunning new development of townhouses located at The Brookdales, Bell Lane, NW11 - These townhouses will consist of four two-bedroom units and two three-bedroom units.

Plot 6 - Master bedroom with walk in closet & en-suite shower room plus study with additional family bathroom. Large open plan kitchen/living room and second living room both with access to garden plus double garage.





The Brookdales, London, NW11 9JU



APPROXIMATE GROSS INTERNAL FLOOR AREA 156.09 SQ M / 1680 SQ FT
THIS FLOOR PLAN IS FOR ILLUSTRATIVE PURPOSES ONLY AND
SHOULD BE USED FOR THIS PURPOSE BY PROSPECTIVE APPLICANTS AS ITS NOT TO SCALE.

(c) AMBERSHORE PIX LIMITED / PHOTO - VIDEO - FLOOR PLANS / 0800 999 1577 / WWW.AMBERSHOREPIX.CO.UK

This floorplan is for illustration purposes only and is not to scale. The position and size of doors, windows, appliances and other features are approximate.