



BULLHEAD ROAD, HERTFORDSHIRE, WD6
GUIDE PRICE £700,000 FREEHOLD

AN IMMACULATELY PRESENTED THREE BEDROOM SEMI DETACHED HOUSE IN SOUTH BOREHAMWOOD

Borehamwood | 020 8953 8899 | borehamwood@winkworth.co.uk



DESCRIPTION:

We are delighted to present this modern semi-detached house located in a sought-after neighbourhood. This beautifully presented property boasts three bedrooms, providing ample space for a growing family or those seeking a home office. The house is bright, comfortable, and meticulously maintained, offering a homely atmosphere for its residents.

The property features a well-maintained garden, perfect for relaxing or entertaining guests, and off-street parking for convenience. The interiors are tastefully decorated in a modern style, creating a welcoming and inviting ambiance throughout the home.

Situated in a desirable area with excellent amenities and transport links nearby, this property offers the perfect combination of comfort and convenience. Don't miss out on the opportunity to make this house your new home. Contact us today to arrange a viewing.

AT A GLANCE

- 3 Bedrooms
- South Borehamwood
- 1201 Square Feet
- Large Rear Garden
- Off Street Parking
- Guest Cloakroom
- Double Glazed
- Gas Central Heating





Approximate Gross Internal Area
111.6 sq m / 1201 sq ft

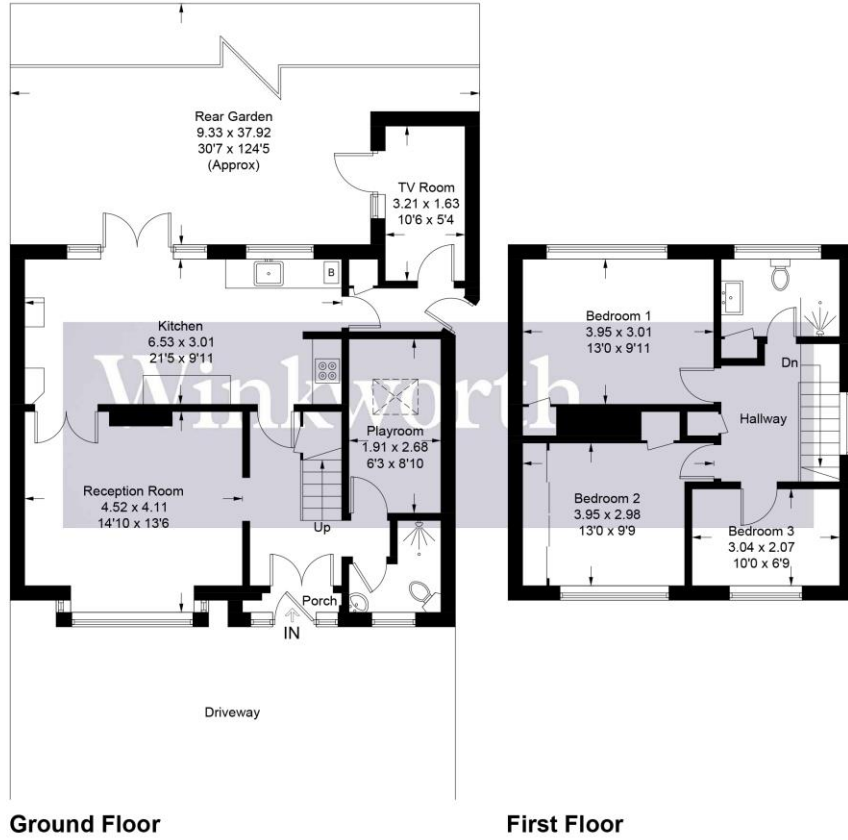
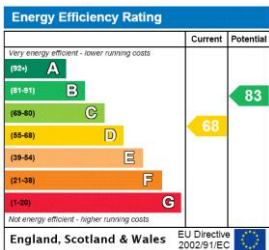


Illustration for identification purposes only, measurements are approximate, not to scale. Winkworth © 2024 (ID1127958)

This floorplan is for illustration purposes only and is not to scale. The position and size of doors, windows, appliances and other features are approximate.



Tenure: Freehold

Term: 0 year and 0 months

Service Charge: £0 per annum

Ground Rent: £ 0 Annually (subject to increase)

Council Tax Band: E

Where no figures are shown, we have been unable to ascertain the information. All figures that are shown were correct at the time of printing.