



FRANKHAM STREET, DEPTFORD, LONDON, SE8
£375,000 LEASEHOLD

WE ARE PLEASED TO OFFER THIS REALLY WELL PRESENTED TWO BEDROOM FIRST FLOOR FLAT, THAT MEASURES CIRCA 541 SQ FT AND IS IDEALLY LOCATED MOMENTS FROM DEPTFORD HIGH STREET, MAINLINE RAIL AND DLR.

Greenwich | 02030533033 | greenwich@winkworth.co.uk

Winkworth

for every step...

winkworth.co.uk



DESCRIPTION:

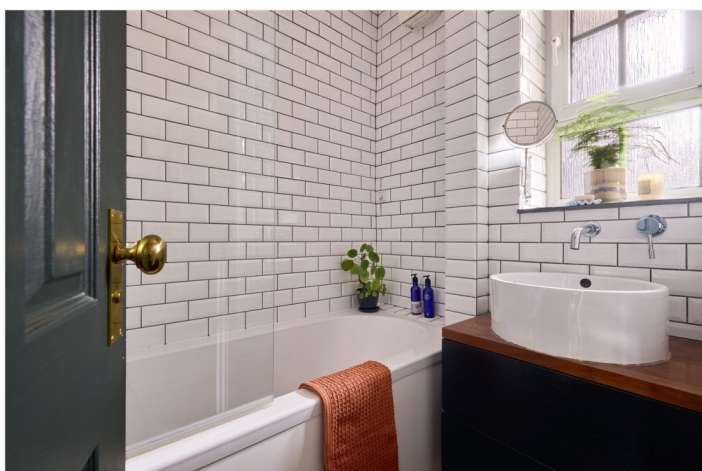
We are pleased to offer this really well presented two bedroom first floor flat, that measures circa 541 sq ft and is ideally located moments from Deptford High Street, mainline rail and DLR.

In excellent condition throughout and extensively refurbished by the current owner, the property features a beautiful kitchen, with plenty of storage and quartz worktops. The bathroom is equally as impressive along with a lovely separate WC. Both bedrooms are double in size with fitted wardrobes in the master and bespoke shelving in the secondary. These two rooms, along with the reception have pleasant views to the rear over communal grounds. Added benefits include hard wood flooring, double glazing and gas central heating. Residents also have access to permit parking, access to communal gardens on the Crossfield Estate and the tri-weekly Deptford market that runs every Wednesday, Friday and Saturday

Frankham House is located on the corner of Frankham Street and Deptford Church Street. As mentioned the High Street is just a few minutes away, offering a good selection of shops and restaurants. Greenwich town Centre is also close by. Your earliest viewing is highly recommended.

AT A GLANCE

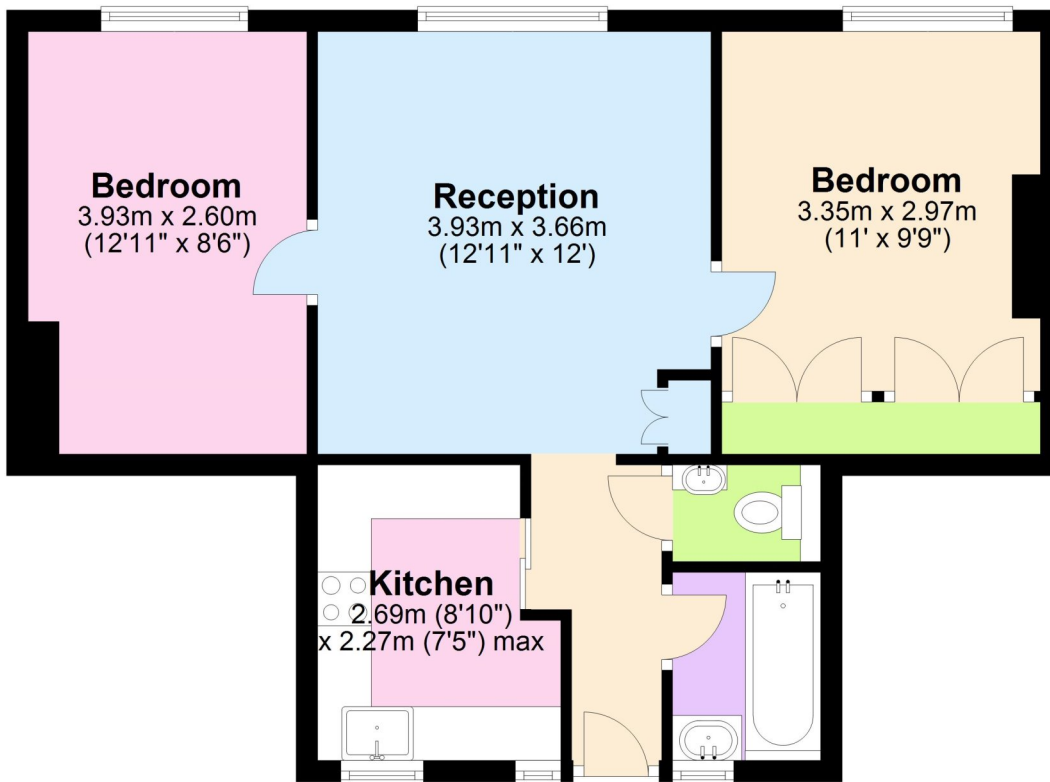
- two bedroom flat
- first floor
- superb condition
- well fitted kitchen
- extensively refurbished
- hard wood flooring
- sep WC
- circa 541 sq ft
- good storage
- close to High Street





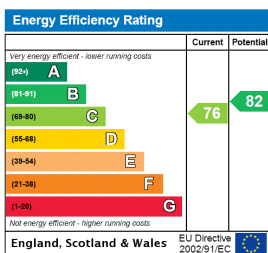
First Floor

Approx. 50.3 sq. metres (541.4 sq. feet)



Total area: approx. 50.3 sq. metres (541.4 sq. feet)

This floorplan is for illustration purposes only and is not to scale. The position and size of doors, windows, appliances and other features are approximate.



Tenure: Leasehold

Term: 89 year and 0 months

Service Charge: £1000 per annum

Ground Rent: £ 10 Annually (subject to increase)

Council Tax Band:

Where no figures are shown, we have been unable to ascertain the information. All figures that are shown were correct at the time of printing.

Greenwich | 02030533033 | greenwich@winkworth.co.uk

Winkworth

for every step...

winkworth.co.uk

Winkworth wishes to inform prospective buyers and tenants that these particulars are a guide and act as information only. All our details are given in good faith and believed to be correct at the time of printing but they don't form part of an offer or contract. No Winkworth employee has authority to make or give any representation or warranty in relation to this property. All fixtures and fittings, whether fitted or not are deemed removable by the vendor unless stated otherwise and room sizes are measured between internal wall surfaces, including furnishings.