



RANDOLPH AVENUE, LONDON, W9 £1,120,000 LEASEHOLD

A beautiful well-proportioned three double bedroom second and third floor maisonette forming part of an attractive red brick conversion located in the heart of this sought after and fashionable area. The apartment has been custom designed to create a large entertaining area offering a wealth of natural light, a fully fitted kitchen, a principal bedroom ensuite with a freestanding bath and two further double bedrooms, both with ensuite shower room. Randolph Avenue is situated close to all the local amenities including the boutique shops, cafes on Clifton Road (Approx. 0.3 Miles), the famous Regents canal and the underground (Approx. 0.1 Miles) at Maida Vale (Bakerloo Line).

Primary Double Bedroom with En Suite Bathroom | Two Further Double Bedrooms with En Suite Shower Rooms & Eaves Storage | Guest WC | Open Plan Kitchen/Reception Room | Leasehold

Winkworth

for every step...

[winkworth.co.uk/maida-vale](https://www.winkworth.co.uk/maida-vale)



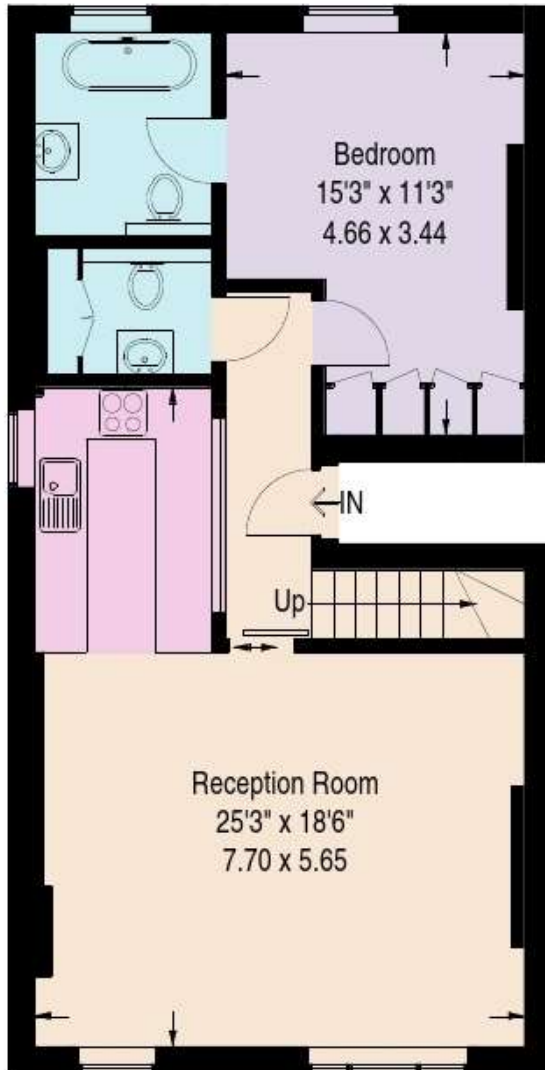
Randolph Avenue, W9

Approximate Gross Internal Area
(Excluding Eaves / Reduced Headroom)

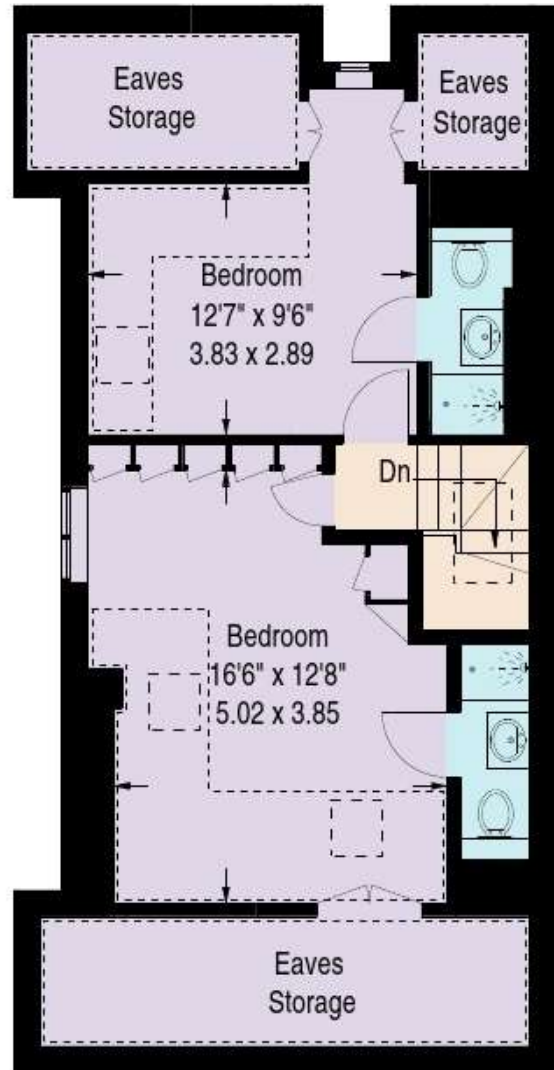
1054 sq ft / 97.9 sq m

Eaves / Reduced Headroom = 284 sq ft / 26.4 sq m

Total = 1338 sq ft / 124.3 sq m



Second Floor



Third Floor

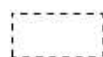
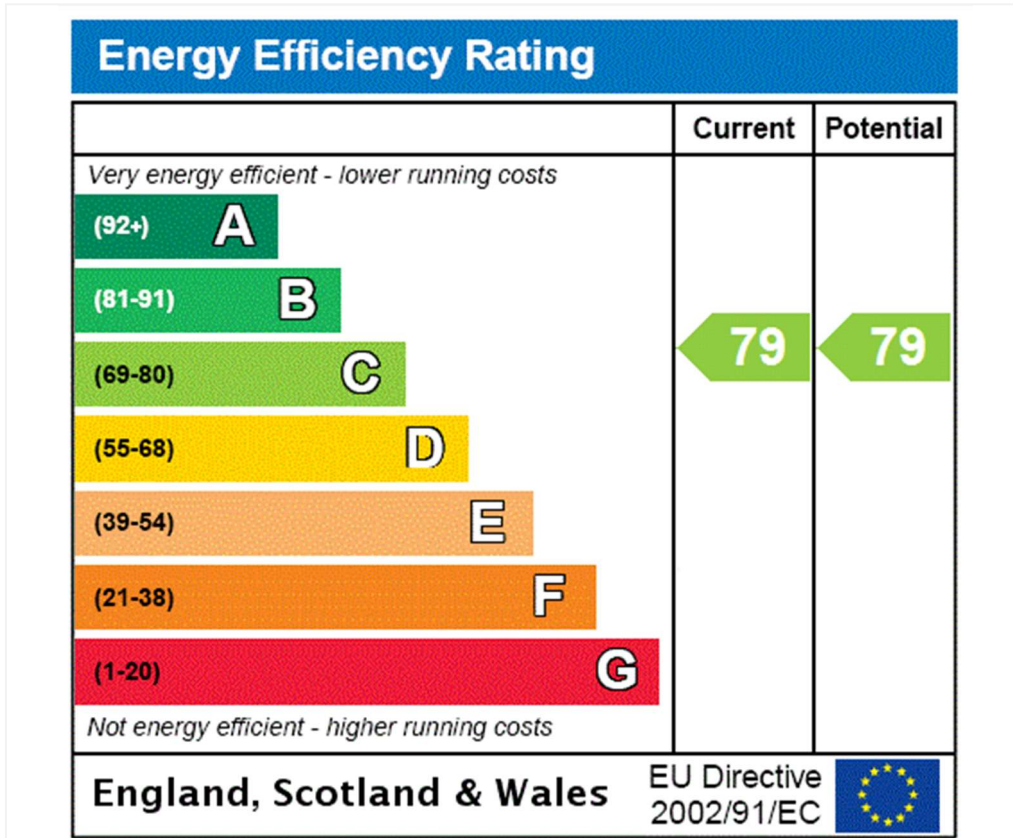
 = Reduced headroom below 1.5 m / 5'0

Illustration for identification purposes only,
measurements are approximate, not to scale.



Tenure: Leasehold

Term: Expires - 01/01/2116

Service Charge: £4,413.1 per annum

Ground Rent: £100 Annually (subject to increase)

Council Tax Band: E

Where no figures are shown, we have been unable to ascertain the information. All figures that are shown were correct at the time of printing.

Where no figures are shown, we have been unable to ascertain the information. All figures that are shown were correct at the time of printing. These particulars are not an offer or contract, nor part of one. You should not rely on statements by Winkworth in the particulars or by word of mouth or in writing "information" as being factually accurate about the property, its condition or its value. Winkworth does not have any authority to make any representations about the property, and accordingly any information given is entirely without responsibility on the part of the agents, seller(s) or lessor(s). These particulars are prepared on the basis of the information supplied by our client and are a rough guide for information only. The photographs show only certain parts of the property. We are not able to check all of the information and therefore are unable to guarantee accuracy. All interested parties are therefore advised to undertake all necessary inspections and checks that they deem appropriate. Where displayed, the square footage is taken from the floor plans, which are created by an independent supplier. These measurements are approximate and included for illustrative purposes only. The measurements may vary. Winkworth does not make any representation as to the accuracy of these measurements and you should seek to verify them for yourself. Winkworth accept no liability for any loss you may suffer if you rely on these measurements. All fixtures and fittings, whether fitted or not are deemed removable by the vendor unless stated. Any reference to alterations to, or use of, any part of the property does not mean that any necessary planning, building regulations or other consent has been obtained. Amenities and appliances have not been tested

Maida Vale | 211-213 Sutherland Avenue, London, W9 1RU | 020 7289 1692 |



for every step...

winkworth.co.uk/maida-vale

Winkworth wishes to inform prospective buyers and tenants that these particulars are a guide and act as information only. All our details are given in good faith and believed to be correct at the time of printing but they don't form part of an offer or contract. No Winkworth employee has authority to make or give any representation or warranty in relation to this property. All fixtures and fittings, whether fitted or not are deemed removable by the vendor unless stated otherwise and room sizes are measured between internal wall surfaces, including furnishings.