



HOLST HOUSE, DU CANE ROAD, LONDON, W12
£425,000 LEASEHOLD

**A SPACIOUS TWO DOUBLE BEDROOM APARTMENT WITH
TWO BATH/SHOWER ROOMS AND ALLOCATED PARKING**

Shepherds Bush | 020 8735 3266 | shepherdsbush@winkworth.co.uk

Winkworth

for every step...

winkworth.co.uk



DESCRIPTION:

A spacious two double bedroom flat located in this modern development and offered for sale with no upper chain. Notable features include a private balcony accessed through the reception room, two bath/shower rooms one of which is ensuite, allocated parking space and nice communal gardens.



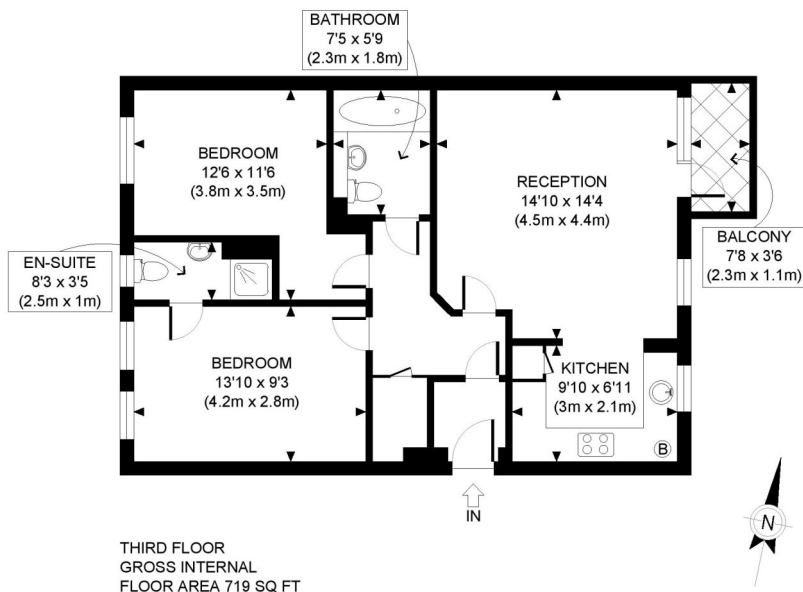
Winkworth

for every step...



Winkworth

for every step...

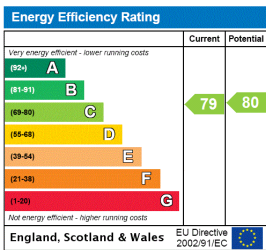


APPROX. GROSS INTERNAL FLOOR AREA: 719 SQ FT/ 67 SQM

PROPERTY PHOTO PLANS.CO.UK
ONE STOP SHOP FOR PROPERTY MARKETING

This plan is for illustrative purposes only and should be used as such by any prospective client. Whilst every attempt has been made to ensure the accuracy of the Floor Plan contained here, measurements of the doors, windows, rooms and any other items are approximate and no responsibility is taken for any errors, omissions, or misstatement. The services, systems and appliances shown have not been tested and no guarantee as to the operability or efficiency can be given.

This floorplan is for illustration purposes only and is not to scale. The position and size of doors, windows, appliances and other features are approximate.



Shepherds Bush | 020 8735 3266 | shepherdsbush@winkworth.co.uk



for every step...

winkworth.co.uk

Winkworth wishes to inform prospective buyers and tenants that these particulars are a guide and act as information only. All our details are given in good faith and believed to be correct at the time of printing but they don't form part of an offer or contract. No Winkworth employee has authority to make or give any representation or warranty in relation to this property. All fixtures and fittings, whether fitted or not are deemed removable by the vendor unless stated otherwise and room sizes are measured between internal wall surfaces, including furnishings.