



DENMAN HOUSE, LORDSHIP TERRACE, LONDON, N16
OIEO £375,000 LEASEHOLD

CHARMING ONE-BEDROOM FLAT IN THE HEART
OF STOKE NEWINGTON, N16.

Stoke Newington | | stokenewington@winkworth.co.uk

Winkworth

winkworth.co.uk

See things differently



DESCRIPTION:

A delightful one-bedroom flat in the highly sought after development of Denman House set on the tree-lined Lordship Terrace. Boasting an incredibly bright and airy open-plan living area, the property provides a blend of both comfort, character and contemporary living, perfect for a first time buyer or busy professional, as well as offer an excellent BTL opportunity. A well-designed kitchen fitted with modern appliances and ample storage space flows from the living area, whilst the bedroom is accessed through a door leading from the main space. The 3 piece bathroom suite is fitted with a sleek shower, wash hand basin and WC.

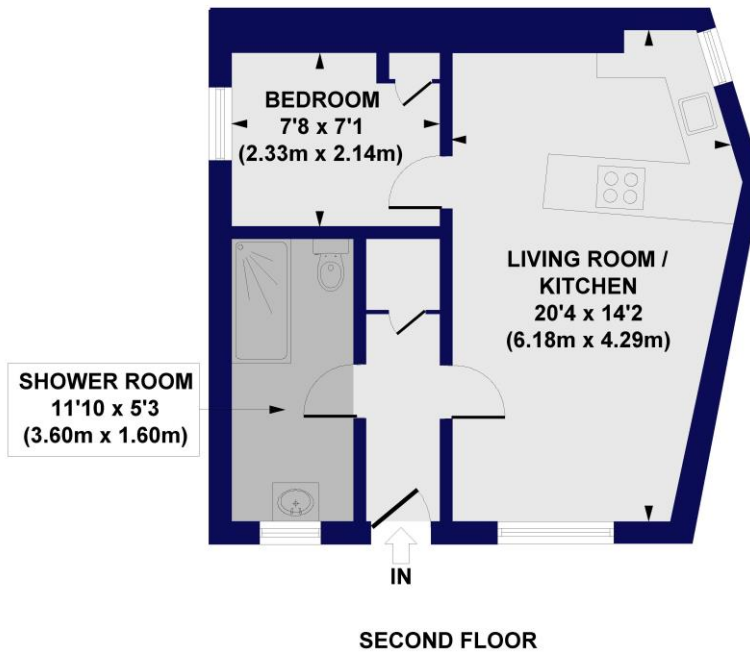
Situated just behind the thriving community of Stoke Newington Church Street, Denman House is conveniently located near an array of local amenities, including boutique shops, cafes, and restaurants. The building overlooks the popular Clissold Park (0.2 miles) providing a perfect escape for outdoor enthusiasts, offering beautiful green spaces, nature and sports facilities. Stoke Newington Overground (0.6 miles) provides direct access to Liverpool Street station, and various bus routes are located nearby.

Winkworth



Winkworth

Denman House, Lordship Terrace, N16
Approx. Gross Internal Floor Area 460 sq. ft / 42.69 sq. m



All measurements of walls, doors, windows, fittings and appliances, including their size and location, are shown as standard sizes and do not constitute any warranty or representation by the seller, their agent or CP Creative. Any intending purchaser must satisfy himself by inspection or otherwise as to the correctness of the information contained in these plans. This plan is for illustrative purposes only and should be used as such by any prospective purchasers.

Winkworth

This floorplan is for illustration purposes only and is not to scale. The position and size of doors, windows, appliances and other features are approximate.

Stoke Newington | | stokenewington@winkworth.co.uk

Winkworth

winkworth.co.uk

See things differently

Winkworth wishes to inform prospective buyers and tenants that these particulars are a guide and act as information only. All our details are given in good faith and believed to be correct at the time of printing but they don't form part of an offer or contract. No Winkworth employee has authority to make or give any representation or warranty in relation to this property. All fixtures and fittings, whether fitted or not are deemed removable by the vendor unless stated otherwise and room sizes are measured between internal wall surfaces, including furnishings.