



SHENLEY ROAD, BOREHAMWOOD, HERTFORDSHIRE, WD6
£525,000 FREEHOLD

AN EXTENDED THREE BEDROOM FAMILY HOUSE WITH SCOPE TO EXTEND (STPP)

DESCRIPTION:

Constructed circa 1930, this three-bedroom house has been in the same family occupation for approaching forty years.

Offered for sale chain free, the property has been subject to a single storey rear extension and offers scope for further extension subject to the usual planning consents.

A rear garden in excess of 160' compliments the 1155 square feet of accommodation along with off street parking to the front for several cars.

Located within easy access of Borehamwood's bustling High Street with all the amenities and transport links it brings the property is also a moments walk away from Meadow Park and the recently rebuilt Hertswood Academy.

Borehamwood | 020 8953 8899 | borehamwood@winkworth.co.uk

AT A GLANCE

- 3 Bedrooms
- Chain Free
- Rear Garden in Excess of 160'
- 1155 Square Feet
- Guest Cloakroom
- Two/Three Receptions
- Off Street Parking
- Scope To Extend (Stpp)





Approximate Gross Internal Area = 107.3 sq m / 1155 sq ft

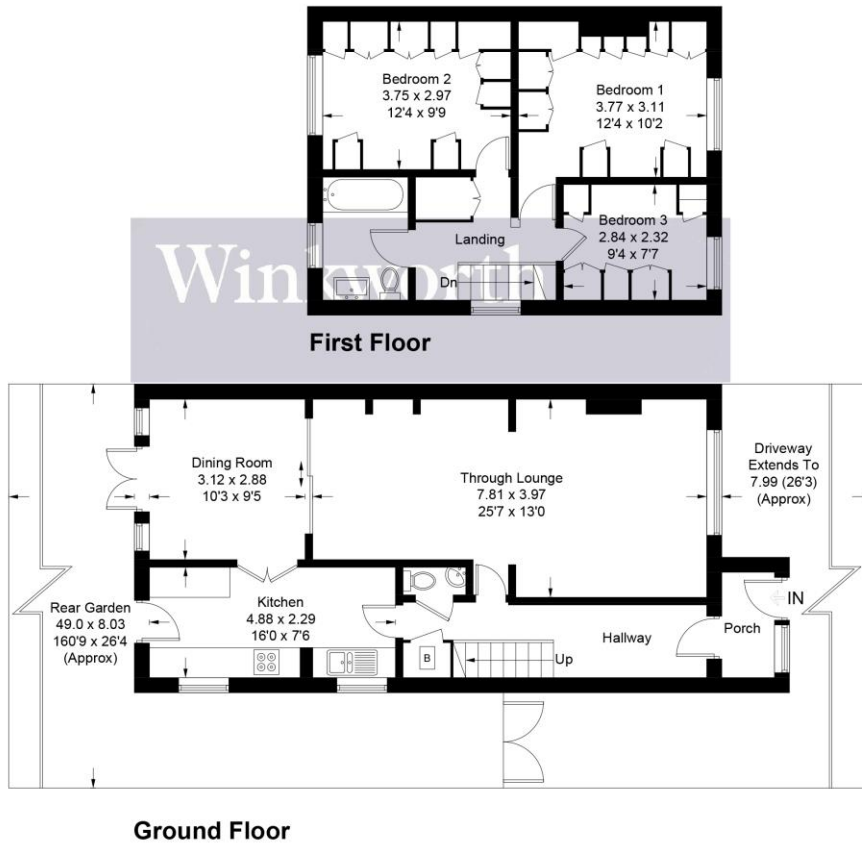


Illustration for identification purposes only, measurements are approximate, not to scale. Winkworth © 2024 (ID1040280)

This floorplan is for illustration purposes only and is not to scale. The position and size of doors, windows, appliances and other features are approximate.

