



BENNETT PARK, BLACKHEATH, SE3 9RB
£499,995 LEASEHOLD

A LOVELY TWO BEDROOM APARTMENT FOUND ON THE TOP FLOOR OF THIS IMPRESSIVE FOUR STOREY DETACHED PERIOD HOME LOCATED IN THE HEART OF BLACKHEATH VILLAGE MOMENTS FROM THE STATION AND SOLD CHAIN FREE.

Blackheath | 0208 8520999 | blackheath@winkworth.co.uk

Winkworth

winkworth.co.uk

See things differently

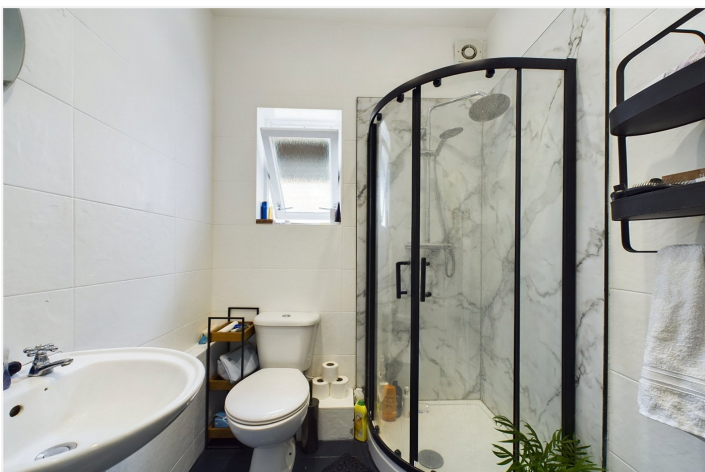


DESCRIPTION:

This is a perfect first time purchase and also an ideal buy to let investment. Your earliest viewing is essential.

Bennett Park is a sought after address located in the heart of Blackheath Village with its array of boutique shops, farmers market, restaurants, bars and station. The heath is on your doorstep and the fabulous Royal Greenwich Park is just 900 metres away with Greenwich town centre beyond. Greenwich maintains a quaint rural village feel and is steeped in history with the old Royal Naval hospital, the Royal Observatory, the National Maritime Museum, and the spectacularly restored Cutty Sark ' the last of the great tea clippers. Greenwich's covered market is one of London's best and attracts people from all over the capital.

There are fantastic transport links with Blackheath Station giving access to London Bridge, Charing Cross and Victoria amongst others with access to the, DLR (0.95 miles Lewisham) bus, riverboat, foot tunnel and cable car all within the area. The area is minutes from Canary Wharf, the City and central London; Just one of the reasons why it's increasingly popular with young professionals and commuters. The O2 is also near by. Close by are several highly sought-after Independent Schools including; Blackheath Preparatory School, The Pointer School, Heath House Preparatory School, Blackheath High Junior School, Blackheath High Seniors School, Colfes (1.5 miles) and Eltham College (2.5 miles) as are the Ofsted "outstanding" John Ball and St Margarets primary schools.

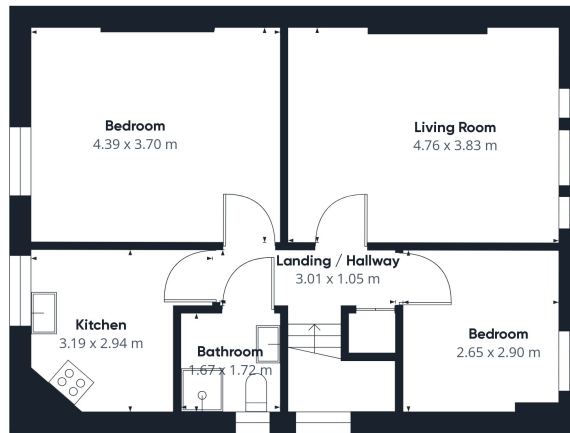






Approximate total area⁽¹⁾
61.02 m²

Floor 0



(1) Excluding balconies and terraces

While every attempt has been made to ensure accuracy, all measurements are approximate, not to scale. This floor plan is for illustrative purposes only.

GIRAFFE360

This floorplan is for illustration purposes only and is not to scale. The position and size of doors, windows, appliances and other features are approximate. Any lease and service charge details have been provided by the vendor. Any interest party should have these checked by a solicitor as part of the purchase process.

Winkworth

winkworth.co.uk

See things differently

Winkworth wishes to inform prospective buyers and tenants that these particulars are a guide and act as information only. All our details are given in good faith and believed to be correct at the time of printing but they don't form part of an offer or contract. No Winkworth employee has authority to make or give any representation or warranty in relation to this property. All fixtures and fittings, whether fitted or not are deemed removable by the vendor unless stated otherwise and room sizes are measured between internal wall surfaces, including furnishings.