

DOVERFIELD ROAD, SW2

£1,850 PER MONTH PART FURNISHED, UNFURNISHED

A SPACIOUS GROUND FLOOR PERIOD MAISONETTE WITH A SHARED PATIO OFF BRIXTON HILL

Herne Hill | 0207 501 8950 | hernehill@winkworth.co.uk

Winkworth

for every step...

winkworth.co.uk

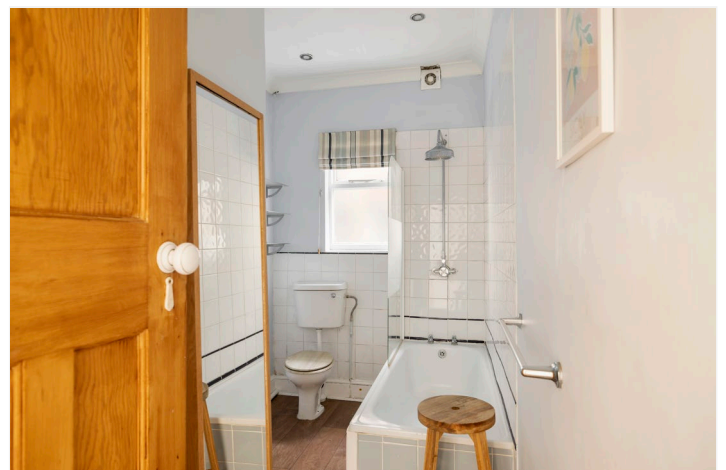


DESCRIPTION:

Exclusively through Winkworth, we are pleased to present this spacious ground floor two double bed maisonette. The property has its own front door with an entrance hallway leading to a large reception to front with shelving and wood floor. There are two good size double bedrooms, both with wood floors, a large bathroom with a shower over the bath and a WC and a walk-in storage cupboard under the stairs. To the rear of the property there is a modern fitted kitchen diner with a fridge freezer, a washing machine, a dishwasher and an electric cooker. The patio garden can be directly accessed from the kitchen - perfect for alfresco dining! The property is offered either part/ unfurnished and is available now.

AT A GLANCE

- Period Ground Floor Maisonette
- Two Double Bedrooms
- Reception
- Kitchen/ Diner
- Family Bathroom
- Ample Storage
- Shared Patio Garden
- Part-furnished/ Unfurnished
- Lambeth Council Tax Band: C
- Available Now




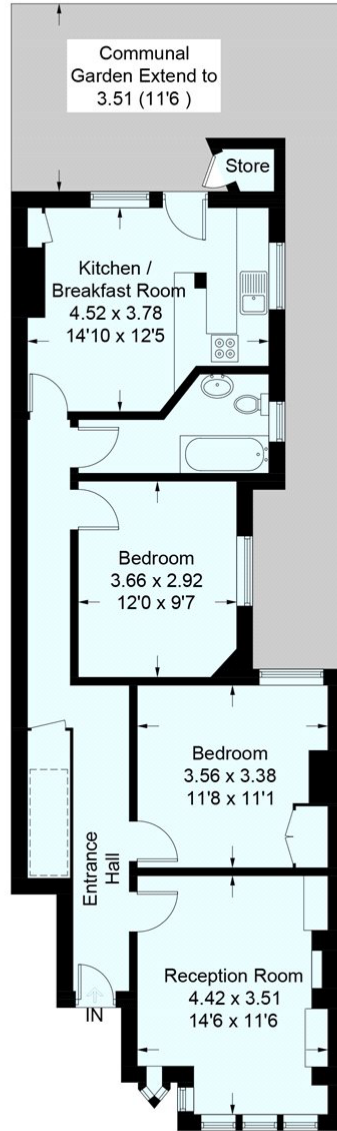


Doverfield Road, SW2

Approximate Gross Internal Area = 75.3 sq m / 810 sq ft
(Excluding Store)



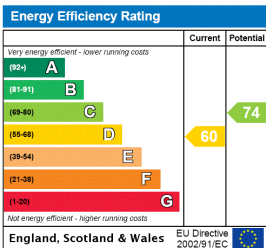
 = Reduced headroom below 1.5m / 5'0



Ground Floor

This plan is for layout guidance only. Not drawn to scale unless stated. Windows and door openings are approximate. Whilst every care is taken in the preparation of this plan, please check all dimensions, shapes and compass bearings before making any decisions reliant upon them. (ID308013)

This floorplan is for illustration purposes only and is not to scale. The position and size of doors, windows, appliances and other features are approximate.



Herne Hill | 0207 501 8950 | hernehill@winkworth.co.uk



for every step...

winkworth.co.uk

Winkworth wishes to inform prospective buyers and tenants that these particulars are a guide and act as information only. All our details are given in good faith and believed to be correct at the time of printing but they don't form part of an offer or contract. No Winkworth employee has authority to make or give any representation or warranty in relation to this property. All fixtures and fittings, whether fitted or not are deemed removable by the vendor unless stated otherwise and room sizes are measured between internal wall surfaces, including furnishings.