



HENDON LANE, LONDON, N3  
£450,000 LEASEHOLD

## A WELL PRESENTED TWO BEDROOM PURPOSE BUILT FLAT

Finchley | 020 8349 3388 | [finchley@winkworth.co.uk](mailto:finchley@winkworth.co.uk)

**Winkworth**

for every step...

[winkworth.co.uk](http://winkworth.co.uk)



## DESCRIPTION:

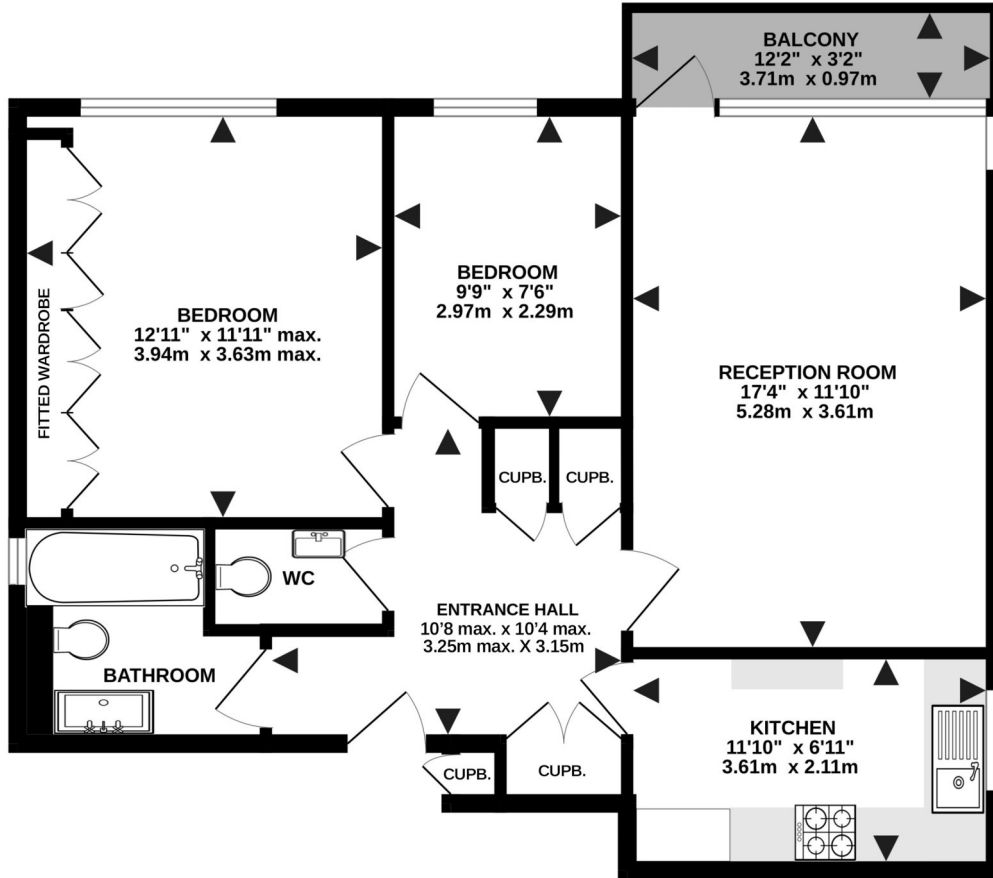
A well-presented two-bedroom first floor apartment situated approx. 10 minutes from Finchley Central underground station and local amenities. The property comprises large spacious reception room with balcony, separate kitchen, two bedrooms, bathroom, separate wc, ample storage, entry phone system, lift-in-block, residents parking and garage-en-block. Offered on a chain free basis.

## AT A GLANCE

- Set in a purpose built block
- First floor with a lift in the block
- Two bedrooms
- Fitted Kitchen
- Bathroom & WC
- Residents Parking & Garage
- Balcony & Communal Gardens
- Chain free







FIRST FLOOR



**GREENACRES, HENDON LANE, LONDON, N3 3SF**

TOTAL APPROX. FLOOR AREA: 686 SQ FT (63.7 SQ M)

Floor plan not to scale. Measurements shown are approximate and should not be relied upon for exactness. No responsibility is taken for any inaccuracy, error or omission. The floor plan is for illustrative purposes and is intended as a general guide of the property layout and nothing more. Anyone using this floor plan should check all measurements and layout details themselves. Any services, systems and appliances shown have not been tested and no guarantee as to their operability or efficiency can be given.

© 2023 stevebarronphotography.com

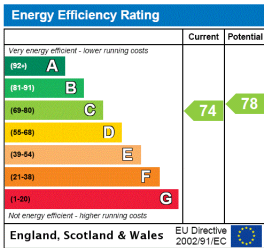
This floorplan is for illustration purposes only and is not to scale. The position and size of doors, windows, appliances and other features are approximate.

**Tenure:** Leasehold

**Term:** 133 year and 9 months

**Service Charge & Ground Rent:** £4000 per annum approx.

Where no figures are shown, we have been unable to ascertain the information. All figures that are shown were correct at the time of printing.



Finchley | 020 8349 3388 | finchley@winkworth.co.uk



for every step...

winkworth.co.uk

Winkworth wishes to inform prospective buyers and tenants that these particulars are a guide and act as information only. All our details are given in good faith and believed to be correct at the time of printing but they don't form part of an offer or contract. No Winkworth employee has authority to make or give any representation or warranty in relation to this property. All fixtures and fittings, whether fitted or not are deemed removable by the vendor unless stated otherwise and room sizes are measured between internal wall surfaces, including furnishings.