

Winkworth

34 Sudlow Road, London, SW18 1HP





A terraced five-bedroom period home in this highly sought after East Putney location. The property has abundance of flexible family accommodation and generous living space.

The property is arranged over three floors, boasts high-ceilings and a wealth of well-kept period features throughout. On the ground floor, the generous entrance hall leads to a double reception room which affords a charming, well-maintained period fireplace. At the rear there is a fully fitted kitchen benefiting from direct access to the 22 ft garden, making the perfect space for flexible family use. On this floor there is also a separate family bathroom/ shower room.

The upper floors boast spacious and flexible family accommodation. The first floor offers three generous double bedrooms and ample amount of storage. The second floor benefits from a further two generously-sized bedrooms, one complemented with a well-appointed ensuite shower room.

Sudlow Road is located between the River Thames and Putney Bridge Road being within a short walk of Wandsworth Mainline Station and within easy reach of the shops, cafes and restaurants of Wandsworth Town Centre and Putney High Street. The open spaces of Wandsworth Park and the Thames Embankment are close at hand.



| Energy Efficiency Rating | | Current | Potential |
|---|----------|-------------------------|-----------|
| Very energy efficient - lower running costs | | | |
| (92-) | A | | |
| (81-91) | B | | |
| (69-80) | C | | |
| (55-68) | D | 67 | |
| (39-54) | E | | |
| (21-38) | F | | |
| (1-20) | G | | |
| Not energy efficient - higher running costs | | | |
| England, Scotland & Wales | | EU Directive 2002/91/EC | |

Accommodation

Entrance Hall, Reception Room, Dining Room, Kitchen, Family Bathroom, Shower Room, Five Bedrooms, Plenty of Storage, 22ft East Facing Rear Garden.

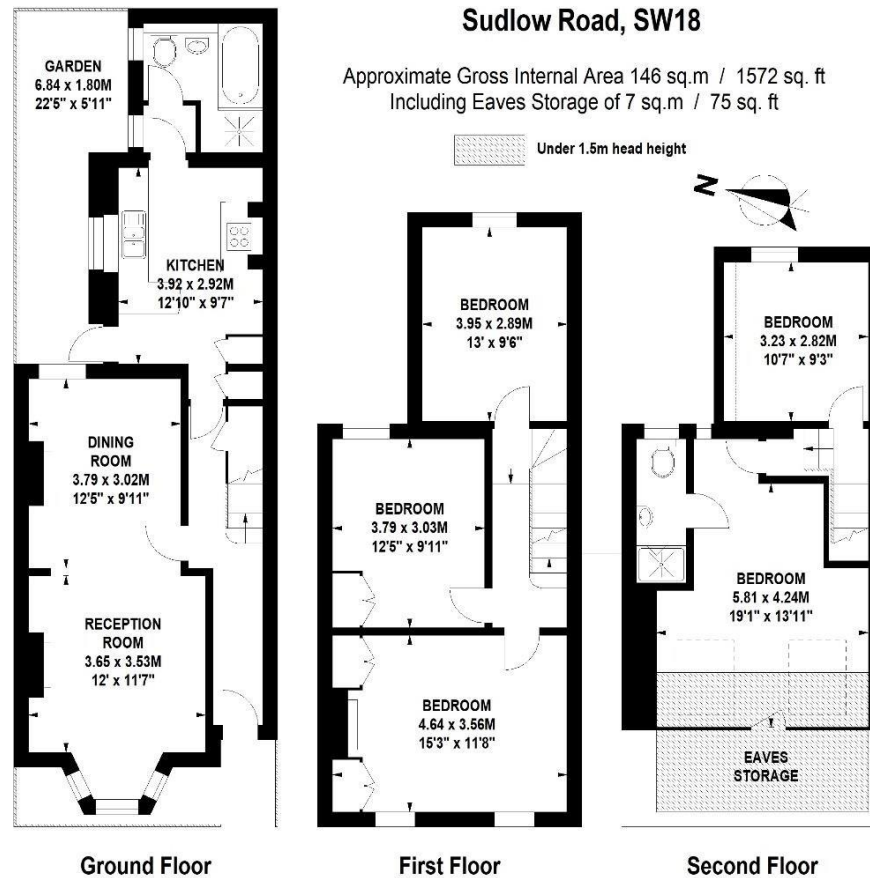
Freehold

Internal area

Approximate gross internal area:

Total 1572 sq. ft/ 146 sq. m

£894,950



Winkworth
020 8788 9295

Floor Plan produced by Mays Floorplans©
Illustration for identification purposes only, not to scale
All measurements are maximum, and include wardrobes and window bays where applicable

W614 Ravensworth 01670 713330