



WEST RESIDENCES

NOTTING HILL W11

Winkworth

New Homes - London



SARM WEST RESIDENCES

The iconic and legendary SARM Studios has been converted into just 9 high specification private apartments. This landmark former church was deconsecrated in 1969 to make way for Island Records as it entered its next chapter as recording mecca for some of the world's best known music stars.

NOTTING HILL W11

Its latest incarnation is now complete, revealing this exemplary one bedroom private home that has been carefully designed and constructed with the greatest attention to detail, incorporating a wealth of luxury features and a private garden all of which showcases this fabulous development as unique within Notting Hill.





SARM WEST RESIDENCES

NOTTING HILL W11

APARTMENT 2

The property enjoys excellent natural light throughout, extensive storage within its generous hallway and an interior that has been meticulously created to provide a combination of luxury specifications to include Miele appliances, sensitively incorporated into a contemporary finish that contrasts superbly with the drama and presence of this handsome period building. All apartments benefit from lift access and a 10 year CRL build warranty.

SARM Residences is an exclusive and unique opportunity to purchase a home within this world renowned recording studio that has hosted artists as diverse as Bob Marley, Madonna, Queen and Rihanna. The development is located in the highly sought after and vibrant Notting Hill district yet enjoys seclusion on a quiet street off Portobello Road. It immediately benefits from the excellent restaurants, shopping and transport facilities of Portobello Road, Westbourne Grove and Holland Park with local tube stations at Notting Hill (District & Circle Lines) and Ladbroke Grove (Circle & Hammersmith & City Lines).

ACCOMMODATION:

ENTRANCE HALL, BEDROOM, BATHROOM, OPEN PLAN KITCHEN/ DINING ROOM, RECEPTION ROOM & PRIVATE GARDEN.

PRICE: £925,000

TENURE: LEASEHOLD (999 YEARS)

GIA: 76.9 SQ M / 827 SQ FT

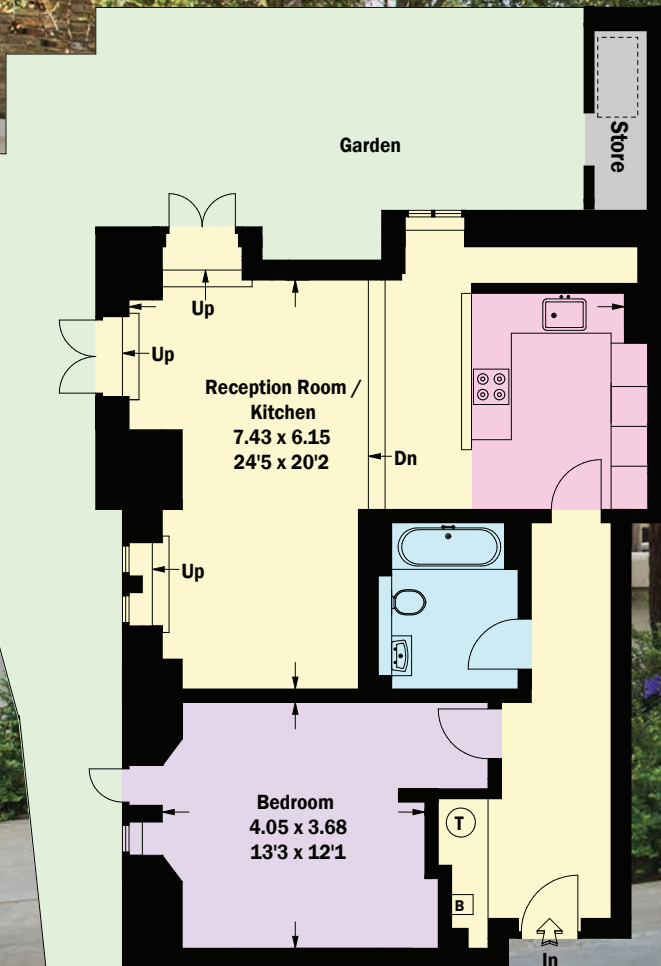
BOROUGH: RBK&C

Winkworth

New Homes - London

New Homes - London
020 7355 0284

China Desk - JJ Feng
jjfeng@winkworth.com



APARTMENT 2
GROUND FLOOR