



STRODE ROAD, LONDON, N17
£700,000 FREEHOLD

DESCRIPTION:

Tucked away in this ever-popular pocket of Tottenham, this charming three-bedroom Victorian home beautifully balances period charm with modern updates.

Sole Agent

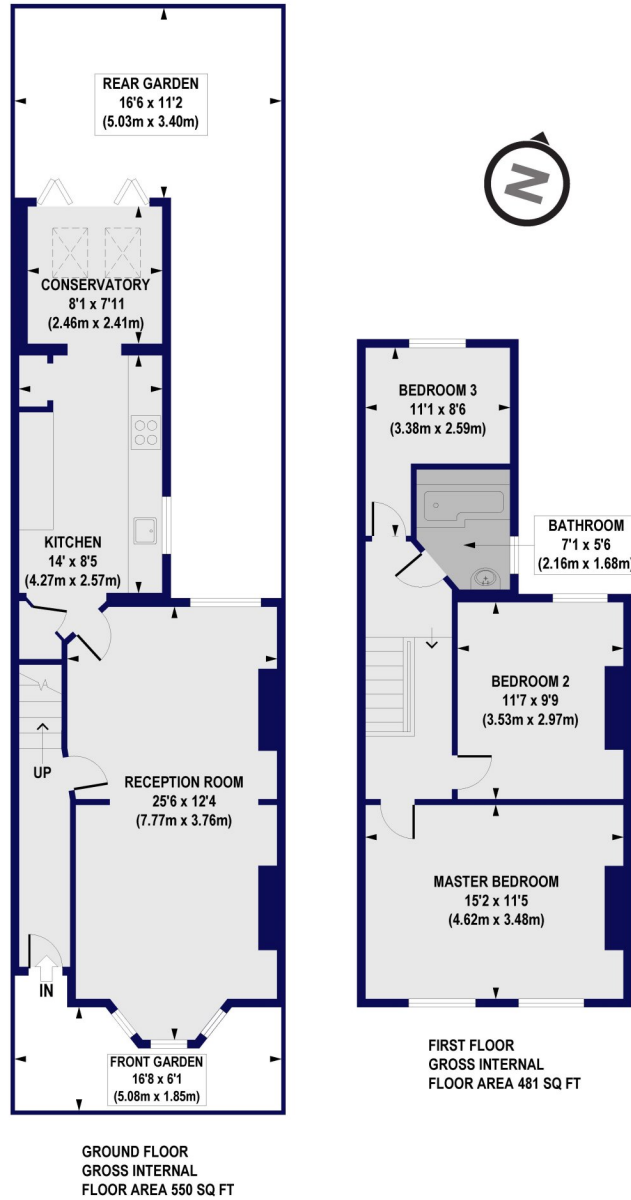
Harringay | 020 8800 5151 | harringay@winkworth.co.uk



for every step...

winkworth.co.uk

Strode Road, N17
Approx. Gross Internal Floor Area 1031 sq. ft / 95.85 sq. m



All measurements of walls, doors, windows, fittings and appliances, including their size and location, are shown as standard sizes and do not constitute any warranty or representation by the seller, their agent or CP Creative. Any intending purchaser must satisfy himself by inspection or otherwise as to the correctness of the information contained in these plans. This plan is for illustrative purposes only and should be used as such by any prospective purchasers.



This floorplan is for illustration purposes only and is not to scale. The position and size of doors, windows, appliances and other features are approximate.

Energy Efficiency Rating	
Current	Potential
Very energy efficient - lower running costs	
A (92+)	
B (81-91)	
C (69-80)	
D (55-68)	75
E (39-54)	58
F (21-38)	
G (1-20)	
Not energy efficient - higher running costs	
England, Scotland & Wales	
EU Directive 2002/91/EC	

Tenure: Freehold

Term: 0 year and 0 months

Service Charge: £0 per annum

Ground Rent: £ 0 Annually (subject to increase)

Council Tax Band:

Where no figures are shown, we have been unable to ascertain the information. All figures that are shown were correct at the time of printing.

Harringay | 020 8800 5151 | harringay@winkworth.co.uk



for every step...

winkworth.co.uk

Winkworth wishes to inform prospective buyers and tenants that these particulars are a guide and act as information only. All our details are given in good faith and believed to be correct at the time of printing but they don't form part of an offer or contract. No Winkworth employee has authority to make or give any representation or warranty in relation to this property. All fixtures and fittings, whether fitted or not are deemed removable by the vendor unless stated otherwise and room sizes are measured between internal wall surfaces, including furnishings.