



11 Eight Acres, Romsey, Hampshire, SO51 5BP

Winkworth



GENEROUS THREE BEDROOM FAMILY HOME IN ROMSEY

This lovely family home is within a 15-minute, level walk to the heart of Romsey town centre. Romsey is a delightful old market town that has retained much of its original character and provides an excellent range of amenities for everyday needs. Facilities include a range of individual shops, schools, leisure facilities, doctors and dentist surgeries and public transport by way of bus and rail services. The M27 can be accessed at junction 3, about 3 ½ miles distant. The major centres of Salisbury, Southampton, Winchester and Portsmouth are all easily accessed. The local train station links with the mainline services to London at Southampton. The New Forest National Park is within 6 miles of Romsey.

This generously proportioned property is located in a quiet residential street in this very popular area of Romsey. The generous accommodation on offer comprises a modern kitchen/breakfast room, fitted with a wide range of eye and base level units and door to the rear garden. The spacious sitting room to the rear elevation leads through to the roomy conservatory which provides views over the rear garden. The garage has been converted to a home office and could easily be adapted to a play room or more formal dining room. A useful addition to the ground floor is a contemporary shower room with W.C. Stairs lead to the first floor where there are three good size bedrooms, all three could be classed as doubles, a modern family shower room, and separate WC. The new owners would likely wish to undertake a programme of redecoration.

Outside, the property has off road parking to the front, bordered with a pleasant planted area. The rear garden features a lawned area edged with mature shrubs. The garden also contains a greenhouse and shed.

- All Mains Utilities
- No Onward Chain
- Ultrafast Broadband Available
- Council Tax Band – C



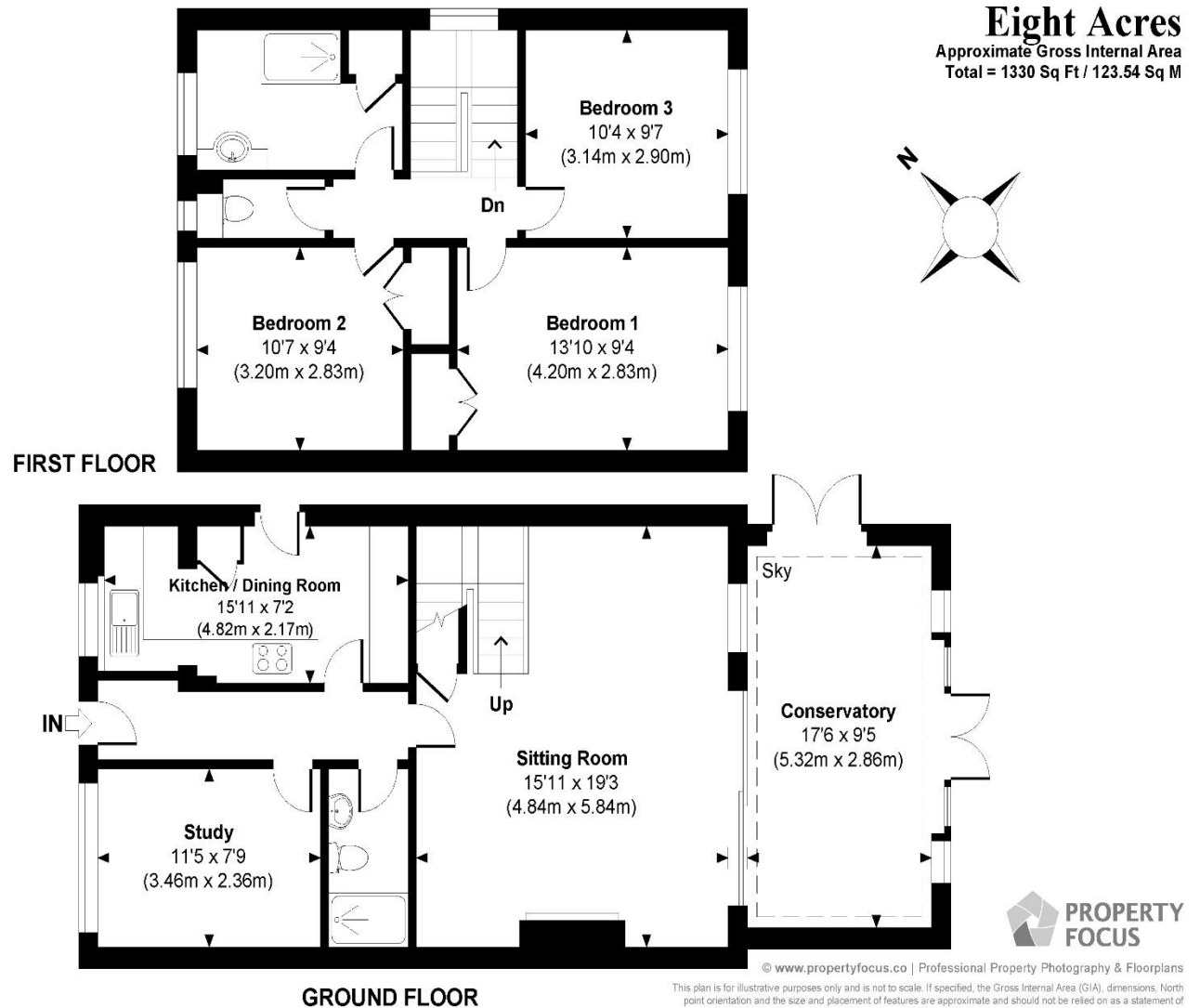
Winkworth

**Address: 11 Eight Acres, Romsey,
Hampshire SO51 5BP**

Council Tax Band: C

EPC: D

Tenure: Freehold



winkworth.co.uk/romsey

Winkworth Romsey

18 Market Place, Romsey, Hampshire, SO51 8NA
01794 511911 | romsey@winkworth.co.uk

winkworth.co.uk/romsey

Winkworth Winchester

2 Black Swan Buildings, Southgate Street,
Winchester, Hampshire, SO23 9DT
01962 866777 | winchester@winkworth.co.uk

Winkworth Mayfair & Country House Department

11 Berkeley Street, Mayfair, London, W1J 8DS
020 7871 0589 | countryhouse@winkworth.co.uk

Winkworth

See things differently