



## Ashley Park, Ashley Heath

Ringwood, BH24 2HA

**Guide Price £625,000**

**Winkworth**



**GUIDE PRICE £625,000**  
**FREEHOLD**

**An immaculate and deceptively spacious three bedroom detached bungalow, in excellent condition throughout.**

**Positioned in this ever popular residential location, a short walk from The Castleman Railway and Moors Valley and further benefiting from a south facing garden and a double garage.**

Three Bedrooms  
Plumbing In Place For En-suite To Main Bedroom  
Close To Castleman Railway & Moors Valley  
Kitchen/Diner  
No Onward Chain  
Detached Bungalow  
Off Street Parking  
Cloakroom With Hand Basin & W.C  
Wrap Around Style South Facing Garden  
Excellent Condition Throughout  
Detached Double Garage  
Bathroom With Bath & Separate Shower

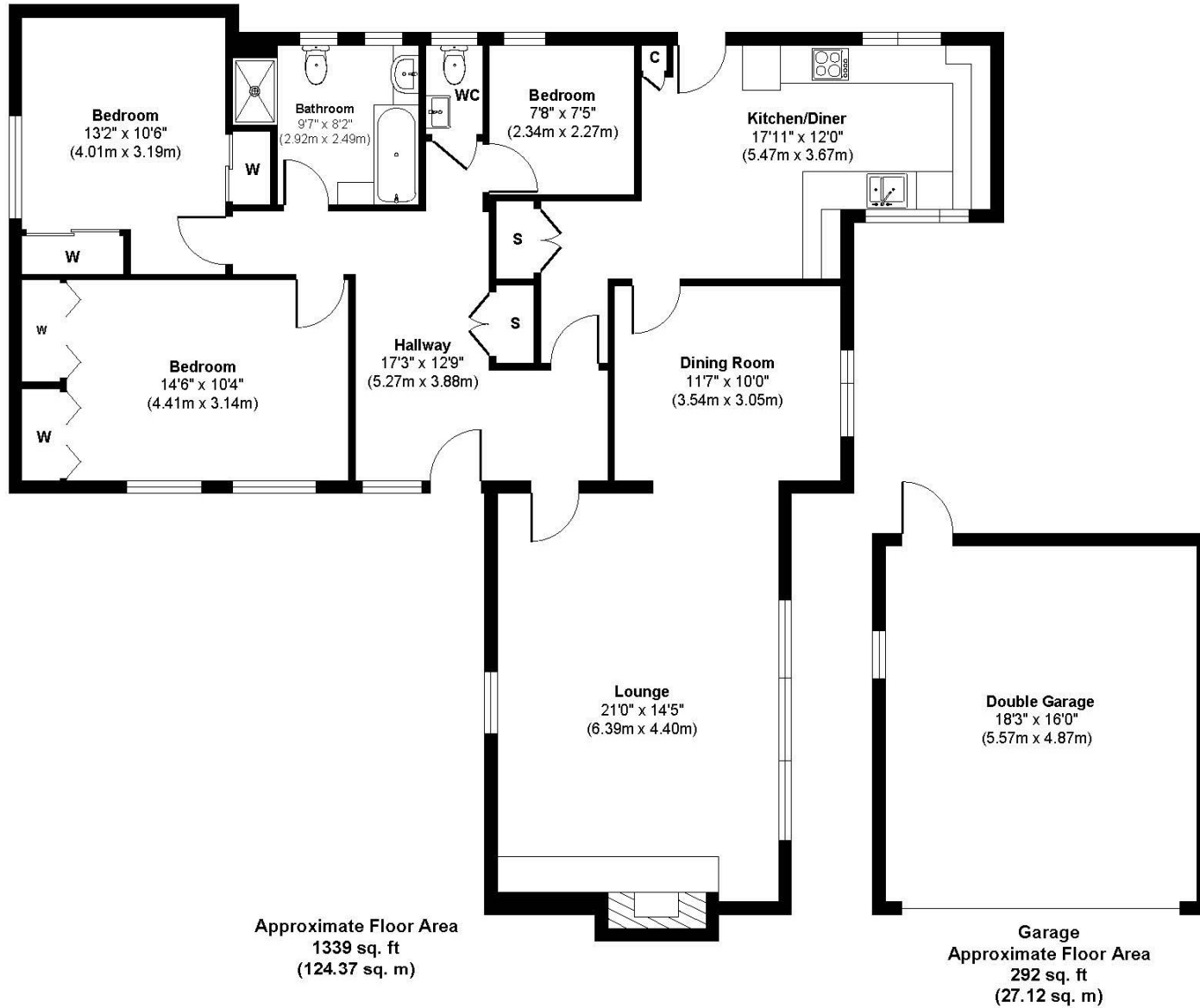
Council Tax Band F EPC C

01202 434365

ferndown@winkworth.co.uk



# Ashley Park



**Approx. Gross Internal Floor Area 1631 sq. ft / 151.49 sq. m**

Illustration for identification purposes only, measurements approximate and not to scale



## LOCATION

Ashley Park is a quiet residential area within easy walking distance to the reputedly shortest high street in England as well as local convenience stores. There are bus routes nearby giving you easy access to Ringwood, Ferndown, Bournemouth & Poole, all of which offer an excellent range of shops, bars, restaurants and leisure facilities. There are award winning beaches just twenty minutes away and the A31 provides quick access to the New Forest, Southampton and London for the commuter by car.

Winkworth Ferndown

406 Ringwood Road, Ferndown, Dorset, BH22 9AU

01202 434365 | [ferndown@winkworth.co.uk](mailto:ferndown@winkworth.co.uk)

[winkworth.co.uk/ferndown](http://winkworth.co.uk/ferndown)

**Winkworth**