



ARODENE ROAD, SW2
£615,000 LEASEHOLD

AN EXCEPTIONAL THREE DOUBLE BEDROOM SPLIT LEVEL VICTORIAN CONVERSION IN BRIXTON

Herne Hill | 0207 501 8950 | hernehill@winkworth.co.uk

Winkworth

for every step...

winkworth.co.uk



DESCRIPTION:

This exceptional three double bedroom, split level, Victorian conversion is located on a quiet, tree-lined residential street in Brixton just off Josephine Avenue. Close to all the amenities of Brixton including Brixton tube station and the lovely Brockwell Park. The first floor of this charming apartment has a large reception room to front with a bright bay window and fireplace. At the rear of the property there is a good-sized kitchen/diner with modern fitted wall and base units. On the second floor there are three double bedrooms and a family bathroom with a shower over the bath. This property retains plenty of period features and has been recently refurbished by the current owner to a high standard.

AT A GLANCE

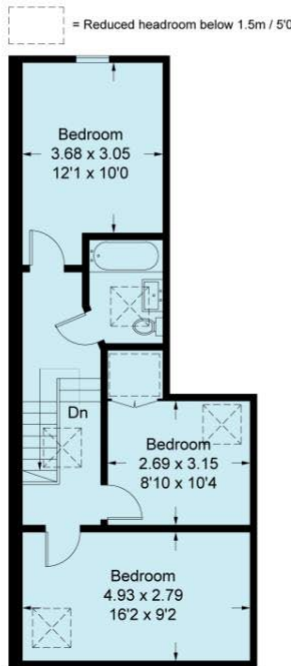
- Victorian conversion
- Split level
- Three double bedrooms
- Reception
- Kitchen/diner
- Family bathroom
- Ample storage
- Long lease
- Recently refurbished to a high standard



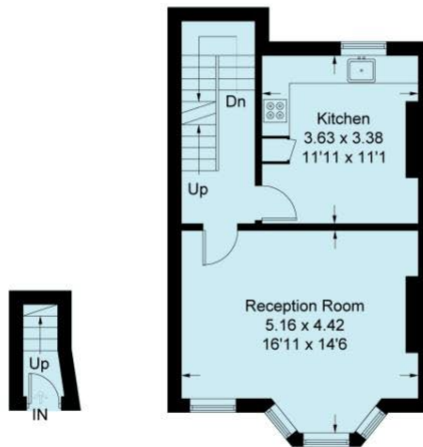


Arodene Road, SW2

Approximate Gross Internal Area = 93.0 sq m / 1001 sq ft



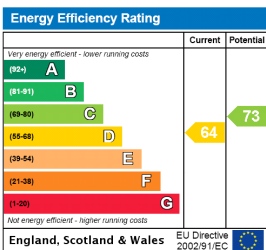
Second Floor



Ground Floor First Floor

This plan is for layout guidance only. Not drawn to scale unless stated. Windows and door openings are approximate. Whilst every care is taken in the preparation of this plan, please check all dimensions, shapes and compass bearings before making any decisions reliant upon them. (ID279695)

This floorplan is for illustration purposes only and is not to scale. The position and size of doors, windows, appliances and other features are approximate.



Tenure: Leasehold
Term: Expires - 01/01/2999
Council Tax Band: D

Where no figures are shown, we have been unable to ascertain the information. All figures that are shown were correct at the time of printing.

Herne Hill | 0207 501 8950 | hernehill@winkworth.co.uk



for every step...

winkworth.co.uk

Winkworth wishes to inform prospective buyers and tenants that these particulars are a guide and act as information only. All our details are given in good faith and believed to be correct at the time of printing but they don't form part of an offer or contract. No Winkworth employee has authority to make or give any representation or warranty in relation to this property. All fixtures and fittings, whether fitted or not are deemed removable by the vendor unless stated otherwise and room sizes are measured between internal wall surfaces, including furnishings.