



**PERCY MEWS, LONDON, W1T**  
**£1,100,000 LEASEHOLD**

**NEW TO THE MARKET IS THIS FIRST FLOOR, THREE  
BEDROOM LATERAL FLAT WITH TERRACE.**

Lease is 105 years.  
Service charge is approximately 2000 p/a.  
There is no ground rent.  
Council tax is Band E 2190 Payable a year.

West End | 020 7240 3322 | westend@winkworth.co.uk

**Winkworth**

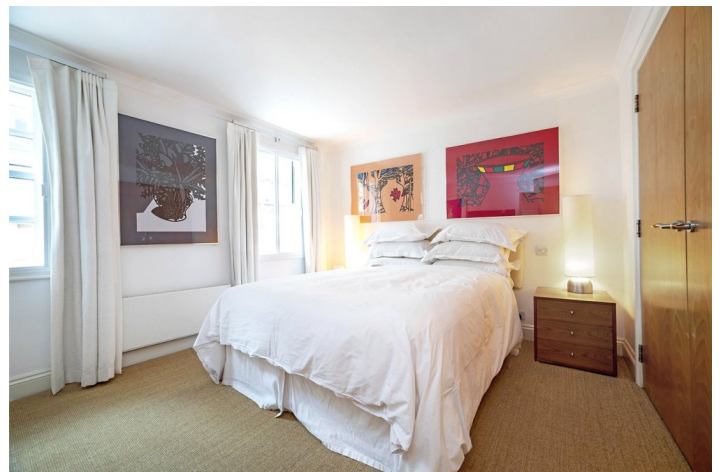
for every step...

*winkworth.co.uk*



## DESCRIPTION:

The property was built as a private mews around 1998. The apartment is set in a private cobbled mews just off Charlotte Street in the heart of Fitzrovia. The flat is in good condition and has been maintained well. The property is very close to Oxford Street and Tottenham Court Road Station with the newly opened Elizabeth Line. Soho, Covent Garden and Bloomsbury are all within easy reach. UCL and LSE Universities are all within walking distance.



**Winkworth**

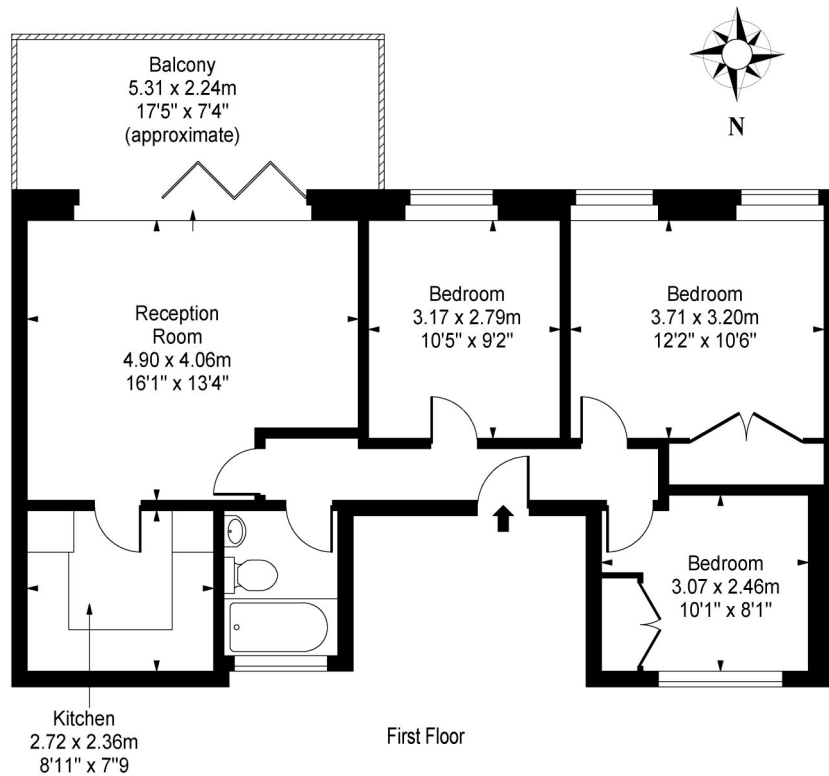
for every step...



**Winkworth**

for every step...

# Percy Mews, London, W1



Approx Gross Internal Area 738 Sq Ft - 68.56 Sq M

This floor plan should be used as a general outline for guidance only and does not constitute in whole or in part an offer or contract. Any intending purchaser or lessee should satisfy themselves by inspection, searches, enquiries and full survey as to the correctness of each statement. Any areas, measurements or distances quoted are approximate and should not be used to value a property or be the basis of any sale or let.

This floorplan is for illustration purposes only and is not to scale. The position and size of doors, windows, appliances and other features are approximate.

West End | 020 7240 3322 | westend@winkworth.co.uk

**Winkworth**

for every step...

*winkworth.co.uk*

Winkworth wishes to inform prospective buyers and tenants that these particulars are a guide and act as information only. All our details are given in good faith and believed to be correct at the time of printing but they don't form part of an offer or contract. No Winkworth employee has authority to make or give any representation or warranty in relation to this property. All fixtures and fittings, whether fitted or not are deemed removable by the vendor unless stated otherwise and room sizes are measured between internal wall surfaces, including furnishings.