



DE QUINCEY ROAD, LONDON, N17
£400,000 LEASEHOLD

DESCRIPTION:

An immaculate two-bedroom first floor maisonette with generous private garden, set beside the popular Tower Gardens Conservation Area of London N17.

Sole Agent

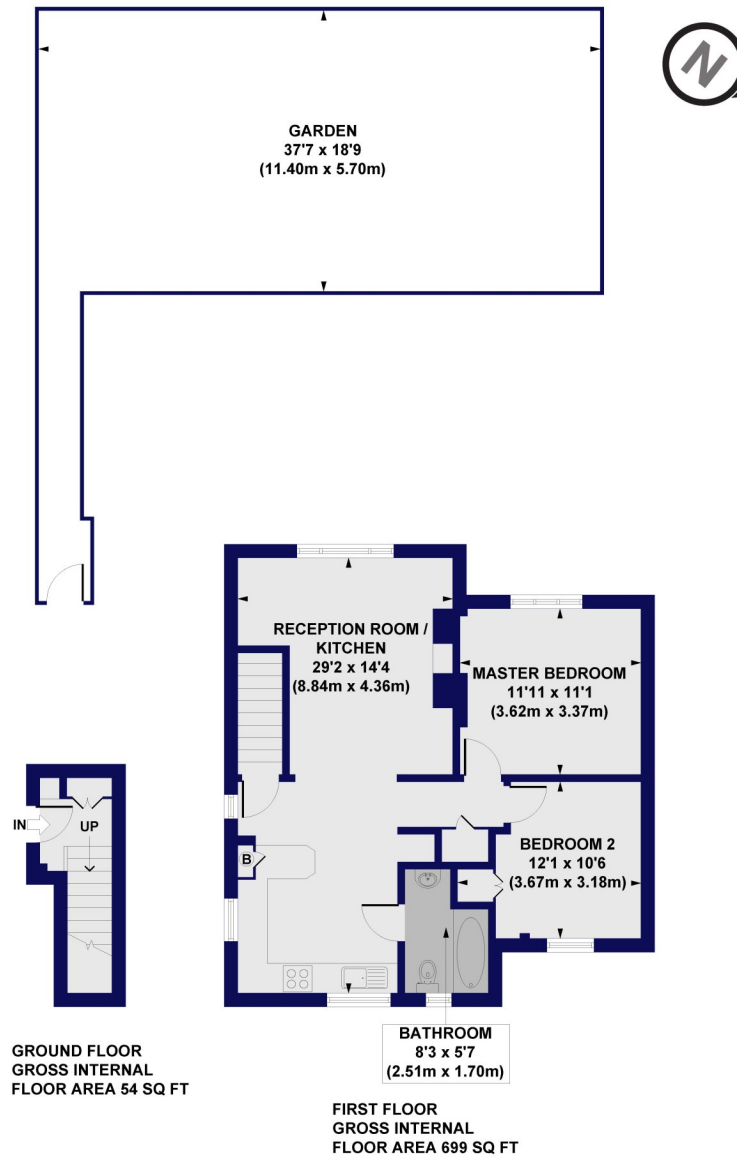
Harringay | 020 8800 5151 | harringay@winkworth.co.uk



for every step...

winkworth.co.uk

De Quincey Road, N17
Approx. Gross Internal Floor Area 753 sq. ft / 69.94 sq. m



All measurements of walls, doors, windows, fittings and appliances, including their size and location, are shown as standard sizes and do not constitute any warranty or representation by the seller, their agent or CP Creative. Any intending purchaser must satisfy himself by inspection or otherwise as to the correctness of the information contained in these plans. This plan is for illustrative purposes only and should be used as such by any prospective purchasers.



This floorplan is for illustration purposes only and is not to scale. The position and size of doors, windows, appliances and other features are approximate.

Energy Efficiency Rating		Current	Potential
Very energy efficient - lower running costs			
(92-100)	A		
(81-91)	B		
(69-80)	C		
(55-68)	D		
(39-54)	E		
(21-38)	F		
(1-20)	G		
Not energy efficient - higher running costs			
		74	79

England, Scotland & Wales EU Directive 2002/91/EC

- Tenure:** Leasehold
 - Term:** 93 year and 10 months
 - Service Charge:** £0 per annum
 - Ground Rent:** £ 0 Annually (subject to increase)
 - Council Tax Band:**
- Where no figures are shown, we have been unable to ascertain the information. All figures that are shown were correct at the time of printing.

Harringay | 020 8800 5151 | harringay@winkworth.co.uk



for every step...

winkworth.co.uk

Winkworth wishes to inform prospective buyers and tenants that these particulars are a guide and act as information only. All our details are given in good faith and believed to be correct at the time of printing but they don't form part of an offer or contract. No Winkworth employee has authority to make or give any representation or warranty in relation to this property. All fixtures and fittings, whether fitted or not are deemed removable by the vendor unless stated otherwise and room sizes are measured between internal wall surfaces, including furnishings.