



**WESTBOURNE TERRACE, BAYSWATER, W2**  
**£915,000 SHARE OF FREEHOLD**

**LOCATED IN W2 - NEAR HYDE PARK, A WELL PRESENTED FIRST AND SECOND FLOOR TWO DOUBLE BEDROOM DUPLEX APARTMENT, SET WITHIN A PERIOD GRADE II BUILDING WITH TWO PRIVATE BALCONIES AND AN ABUNDANCE OF NATURAL LIGHT.**

Paddington & Bayswater | 020 7467 5770 | paddington@winkworth.co.uk

**Winkworth**

for every step...

[winkworth.co.uk](http://winkworth.co.uk)



## DESCRIPTION:

With close proximity to Hyde Park, situated on and considered one of the finest wide tree-lined avenues in London. The apartment has a wealth of charm and character featuring a double aspect sitting room with floor to ceiling windows and an abundance of natural light. In addition, the property has two private balconies accessed from the sitting room and master bedroom.

This quiet 20th century later addition benefits from modern day double glazing and ideal for working from home.

This property is offered for sale with no upward chain, share of freehold and off street parking on a private road for an annual fee is available.



**Winkworth**

for every step...

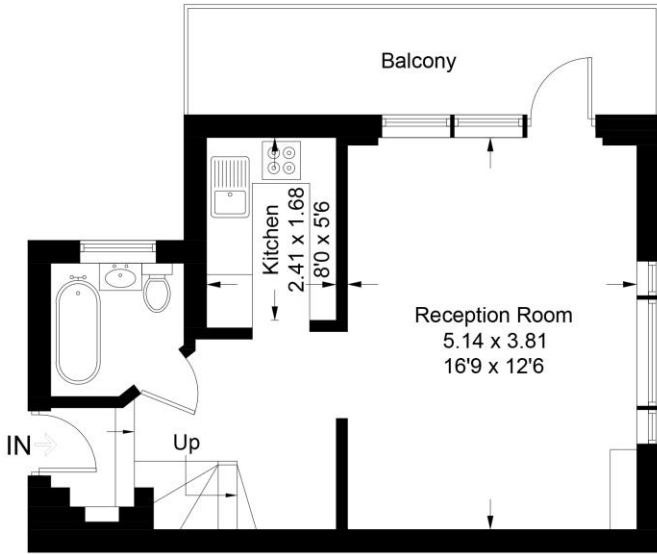


**Winkworth**

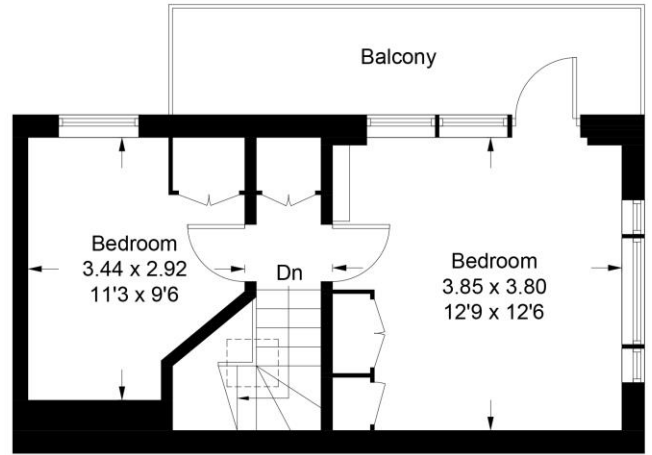
for every step...

# Westbourne Terrace

Approximate Gross Internal Area = 67.3 sq m / 725 sq ft



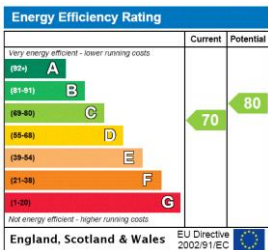
**First Floor**



**Second Floor**

Illustration for identification purposes only, measurements are approximate, not to scale. floorplansUsketch.com © (ID920586)

This floorplan is for illustration purposes only and is not to scale. The position and size of doors, windows, appliances and other features are approximate.



**Tenure:** Share of Freehold with Lease

**Term:** About 997 years remaining

**Service Charge:** About £2,600 per annum

**Ground Rent:** Zero

**Council Tax Band:** E

Where no figures are shown, we have been unable to ascertain the information. All figures that are shown were correct at the time of printing.

Paddington & Bayswater | 020 7467 5770 | paddington@winkworth.co.uk



for every step...

winkworth.co.uk

Winkworth wishes to inform prospective buyers and tenants that these particulars are a guide and act as information only. All our details are given in good faith and believed to be correct at the time of printing but they don't form part of an offer or contract. No Winkworth employee has authority to make or give any representation or warranty in relation to this property. All fixtures and fittings, whether fitted or not are deemed removable by the vendor unless stated otherwise and room sizes are measured between internal wall surfaces, including furnishings.