



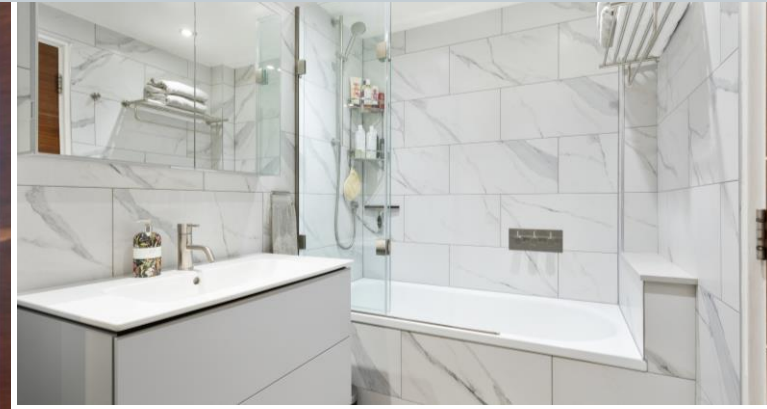


A bright and spacious two double bedroom apartment situated on the first floor of this popular private block in Putney. The property has been newly refurbished throughout and includes a generous reception room with separate fitted kitchen. The two double bedrooms are serviced by a modern bathroom. Further benefits include a private garage to the rear of the block and large, well-maintained communal gardens. Sold with a Share of the Freehold and no onward chain.

White Court is located on West Hill, just 0.6 miles from East Putney Tube Station and 0.7 miles from Putney mainline which both offer excellent transport links into the City. There are also convenient bus routes to Clapham Junction, Victoria and the City plus many bus routes into Putney, the West End, Kingston and Wimbledon. The A3 also offers easy access by road out of London. The large green open spaces of Putney Heath and Wimbledon Common are close by.

- Purpose Built Flat
- Two Double Bedrooms
- Private Garage
- Communal Gardens
- Reception Room
- Separate Kitchen
- Lift Access
- No Onward Chain

White Court, West Hill, Putney, SW15 3JB



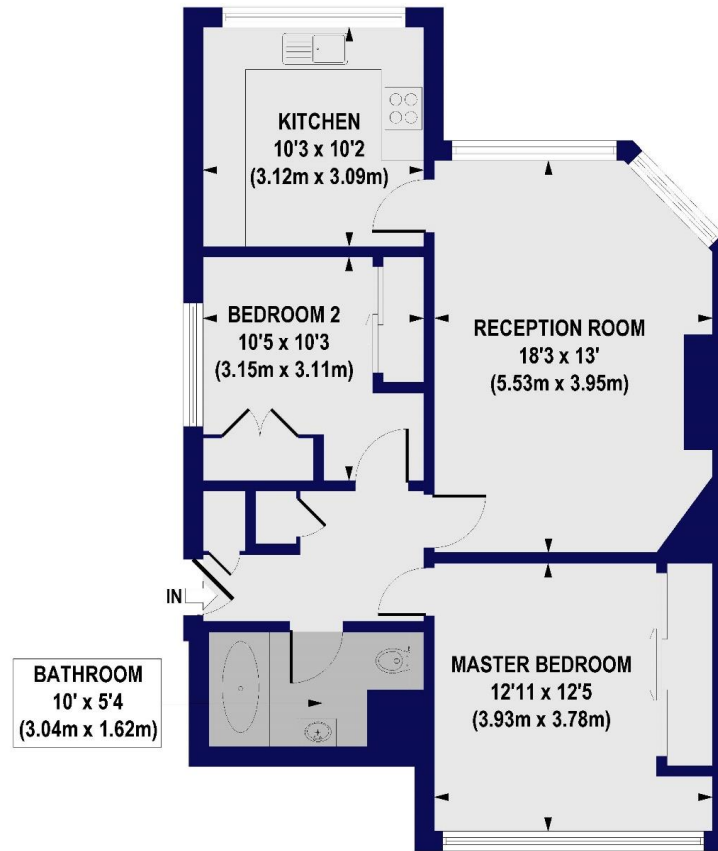
Energy Efficiency Rating		
	Current	Potential
Very energy efficient - lower running costs		
(92+)	A	
(81-91)	B	
(69-80)	C	
(55-68)	D	
(39-54)	E	
(21-38)	F	
(1-20)	G	
Not energy efficient - higher running costs		
	72	81
EU Directive 2002/91/EC		
England, Scotland & Wales		

Share of Freehold

Internal area
Approximate gross internal area:
Total 744 sq ft/ 69.14 sq m

White Court West Hill, SW15

Approx. Gross Internal Floor Area 744 sq. ft / 69.14 sq. m



FIRST FLOOR

All measurements of walls, doors, windows, fittings and appliances, including their size and location, are shown as standard sizes and do not constitute any warranty or representation by the seller, their agent or CP Creative. Any intending purchaser must satisfy himself by inspection or otherwise as to the correctness of the information contained in these plans. This plan is for illustrative purposes only and should be used as such by any prospective purchasers.

Winkworth