

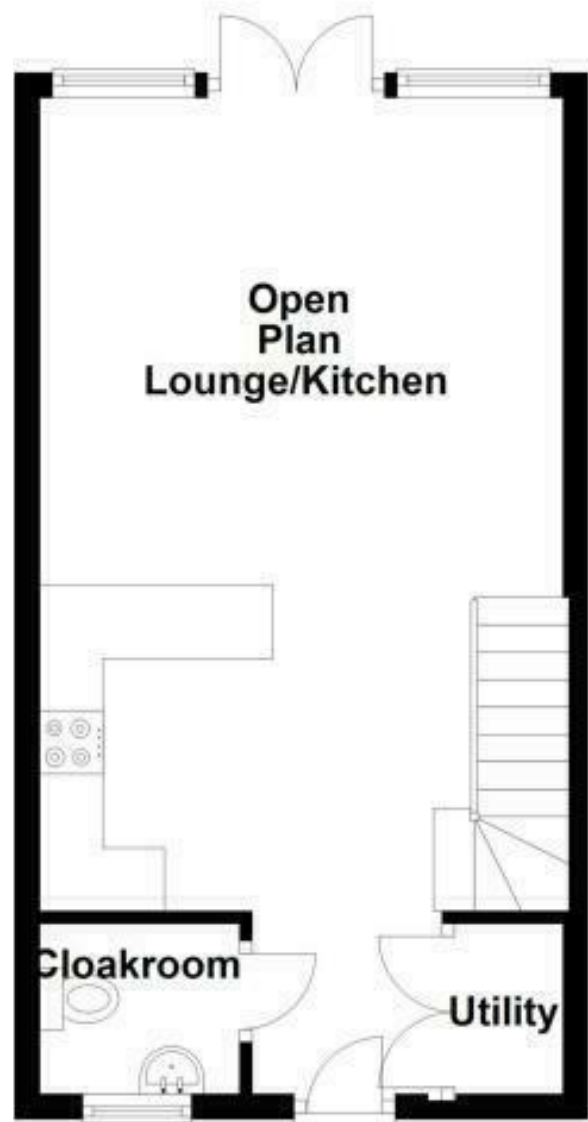
**Great Leighs, Bourne, Lincolnshire**

*This floorplan is for illustration purposes only and is not to scale. The position and size of doors, windows, appliances and other features are approximate.*

Energy Efficiency Rating		Current	Potential
Very energy efficient - lower running costs			
(92+)	<b>A</b>		<b>96</b>
(81-91)	<b>B</b>	<b>82</b>	
(69-80)	<b>C</b>		
(55-68)	<b>D</b>		
(39-54)	<b>E</b>		
(21-38)	<b>F</b>		
(1-20)	<b>G</b>		
Not energy efficient - higher running costs			
England, Scotland & Wales		EU Directive 2002/91/EC	

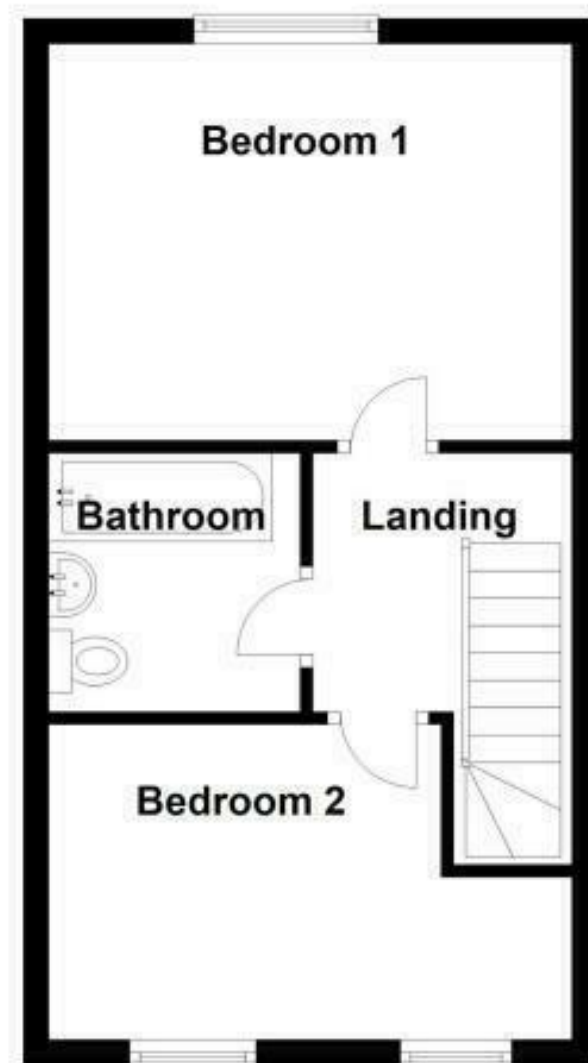
**Ground Floor**

Approx. 32.6 sq. metres (351.4 sq. feet)

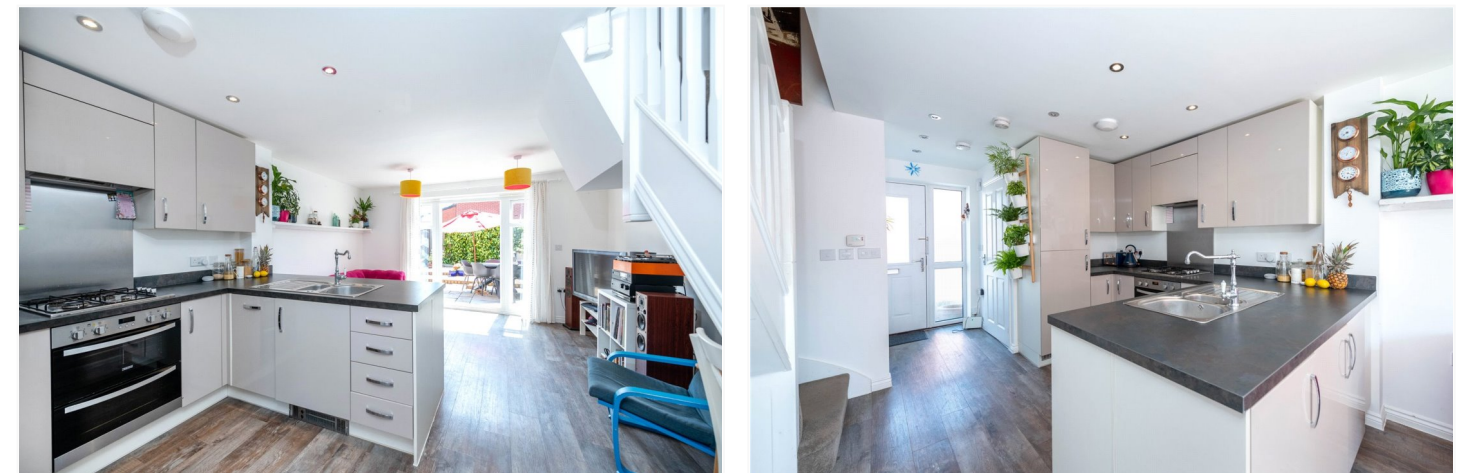


**First Floor**

Approx. 32.6 sq. metres (351.4 sq. feet)



**Total area: approx. 65.3 sq. metres (702.8 sq. feet)**



**41 Great Leighs, Bourne, Lincolnshire, PE10 0WF**

**£175,000 Freehold**

A superbly presented two bedroom terraced home which would make an ideal first time purchase or buy to let investment. The property benefits from a bright and spacious open plan kitchen/living room, downstairs cloakroom and large utility cupboard with space and plumbing for washing machine. On the first floor there are two generous bedrooms and a modern fitted bathroom. Outside there is a driveway providing off road parking for two cars and to the rear a fully enclosed landscaped south facing garden. The property is located on the popular Elsea Park development giving easy access to the A15 road link to Peterborough and its main line train station and Tesco supermarket, Co-op food store and the Grammar School are also within walking distance. Please call for more information.

Two Bedroom Mid-Terrace | Open Plan Kitchen/Living Area | Driveway for Two Cars | South Facing Rear Garden | EPC Rating B | Council Tax Band A

Winkworth Bourne | 01778392807 |  
bourne@winkworth.co.uk  
winkworth.co.uk/bourne



winkworth.co.uk/bourne

See things differently.

Under the Property Misdescriptions Act 1991, the Particulars are a guide and act as information only. All details are given in good faith and are believed to be correct at time of printing. Winkworth give no representation as to their accuracy and potential purchasers or tenants must satisfy themselves by inspection or otherwise as to their correctness. No employee at Winkworth has authority to make or give any representation or warranty in the relation to this property.





**Bedroom One** - 13'1" x 10'8" (4m x 3.25m) With upvc double glazed window to the rear, built in wardrobes, radiator and power points.

**Bedroom Two** - 13'1" x 8'4" (4m x 2.54m) With two upvc double glazed windows to the front, radiator and power points.

**Bathroom** - With panelled bath with wall mounted shower and glass screen, low level wc, wash hand basin, part tiled walls and extractor fan.

**Outside** - To the side of the property there is a driveway providing off road parking for two cars. The rear garden is a lovely south facing landscaped driveway being fully enclosed with gate giving access to the rear.



**LOCAL AUTHORITY**

South Kesteven District Council

**TENURE**

Freehold

**COUNCIL TAX BAND**

A

**ACCOMMODATION**

**Entrance Hall** - Bright open plan to the kitchen and living room, double opening doors to a large utility cupboard with space and plumbing for washing machine and further appliance and wall mounted gas boiler supplying hot water and central heating.

**Downstairs Cloakroom** - With low level wc, wash hand basin and frosted window.

**Open Plan Lounge/Kitchen** - 21'4" x 13'7" (6.5m x 4.14m) With modern fitted units comprising, one and a half bowl sink with cupboard below, good range of wall and base units, built in oven and hob with extractor above, integrated fridge freezer, integrated slimline dishwasher, part tiled walls and radiator. The kitchen is open plan to the lounge which has french doors and upvc double glazed windows onto the rear garden, radiator, power points, tv point and stairs leading to the first floor.

**First Floor Landing** - With door leading to.

