



**HANTHORPE ROAD, MORTON, LINCOLNSHIRE, PE10 ONT.  
£175,000 FREEHOLD**

An established four bedroom semi detached house in need of complete renovation located in the popular village of Morton with generous corner plot and private driveway to the side. The property is offered for sale with no ongoing chain and benefits from, lounge and separate dining room, kitchen with utility room and downstairs cloakroom. On the first floor there are four well-proportioned bedrooms and shower room. Outside there is a lawned front garden with pathway leading to the rear and side established gardens with private driveway providing ample off road parking. Please call 01778 392807 for more information.

Bourne | 01778392807 | [bourne@winkworth.co.uk](mailto:bourne@winkworth.co.uk)

**Winkworth**

for every step...

[winkworth.co.uk](http://winkworth.co.uk)

## ACCOMMODATION

### Entrance Hall

**Lounge** - 17'4" x 11'1" (5.28m x 3.38m)

**Dining Room** - 11'1" x 10'2" (3.38m x 3.1m)

**Kitchen** - 16'2" x 5'10" (4.93m x 1.78m)

**Utility Room** - 11'1" x 7'2" (3.38m x 2.18m)

### Downstairs Cloakroom

### First Floor Landing

**Bedroom One** - 10'8" x 10'5" (3.25m x 3.18m)

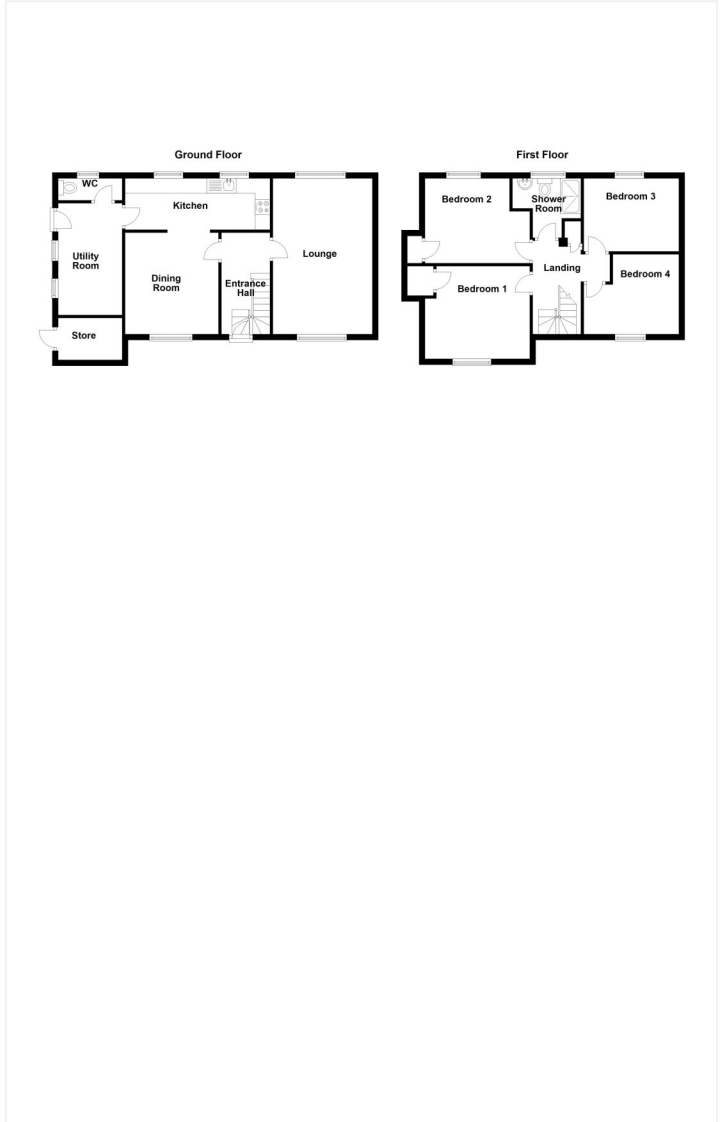
**Bedroom Two** - 10'8" x 9'3" (3.25m x 2.82m)

**Bedroom Three** - 11'3" x 8'2" (3.43m x 2.5m)

**Bedroom Four** - 9'3" x 5'6" (2.82m x 1.68m)

### Shower Room

### Outside



This floorplan is for illustration purposes only and is not to scale. The position and size of doors, windows, appliances and other features are approximate.

<b>Tenure:</b>	Freeholda
<b>Term:</b>	Expires -
<b>Service Charge:</b>	£0 per annum
<b>Ground Rent:</b>	£ 0 Annually (subject to increase)
<b>Council Tax Band:</b>	B

Where no figures are shown, we have been unable to ascertain the information. All figures that are shown were correct at the time of printing.

Bourne | 01778392807 | bourne@winkworth.co.uk

**Winkworth**

for every step...

[winkworth.co.uk](http://winkworth.co.uk)

Winkworth wishes to inform prospective buyers and tenants that these particulars are a guide and act as information only. All our details are given in good faith and believed to be correct at the time of printing but they don't form part of an offer or contract. No Winkworth employee has authority to make or give any representation or warranty in relation to this property. All fixtures and fittings, whether fitted or not are deemed removable by the vendor unless stated otherwise and room sizes are measured between internal wall surfaces, including furnishings.