



Lime Grove, Shepherd's Bush, W12

£650,000 Share of Freehold

An incredibly spacious flat with private garden, on the ground floor of a red brick mid-terrace Victorian house.

2 Reception Rooms | Kitchen | Dining Room | Bedroom | Bathroom | Garden | 964 Sq Ft / 90 Sq M |
Council Tax Band E | EPC Rating Band D

Winkworth



LOCATION

Lime Grove is an attractive residential street which runs between Goldhawk Road and Uxbridge Road. Moments from Shepherd's Bush Green, Westfield London shopping centre, an abundance of independent shops, restaurants and an internationally famous music venue, as well as outstanding transport links. Shepherd's Bush Market Underground station is within 2-3 minutes' walk, with Shepherd's Bush also within easy reach, offering both Central line and London Overground services.

DESCRIPTION

Offered in good condition throughout and boasting numerous original features, accommodation comprises entrance hall, double reception room, bedroom, bathroom and extended kitchen which opens out to a private garden. Further benefits include a large cellar which offers excellent storage, or which could be converted to additional living space, subject to the usual consents. The flat offers incredibly spacious accommodation and whilst currently configured as a one bedroom flat, could be rearranged to provide two bedrooms.

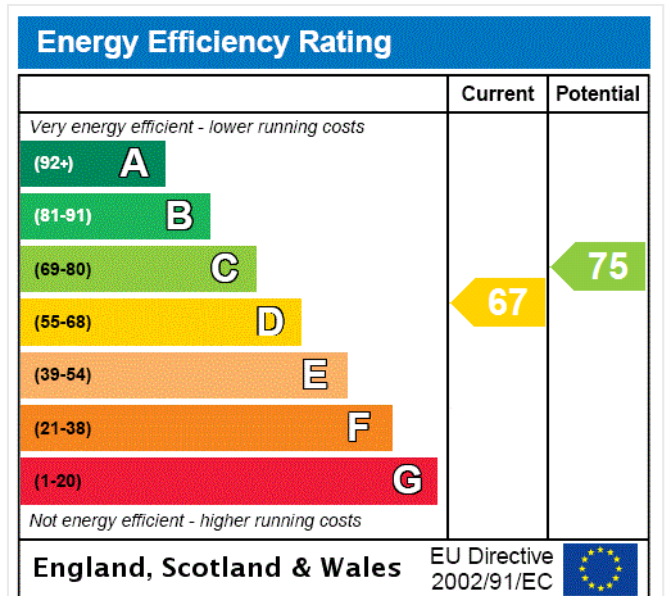


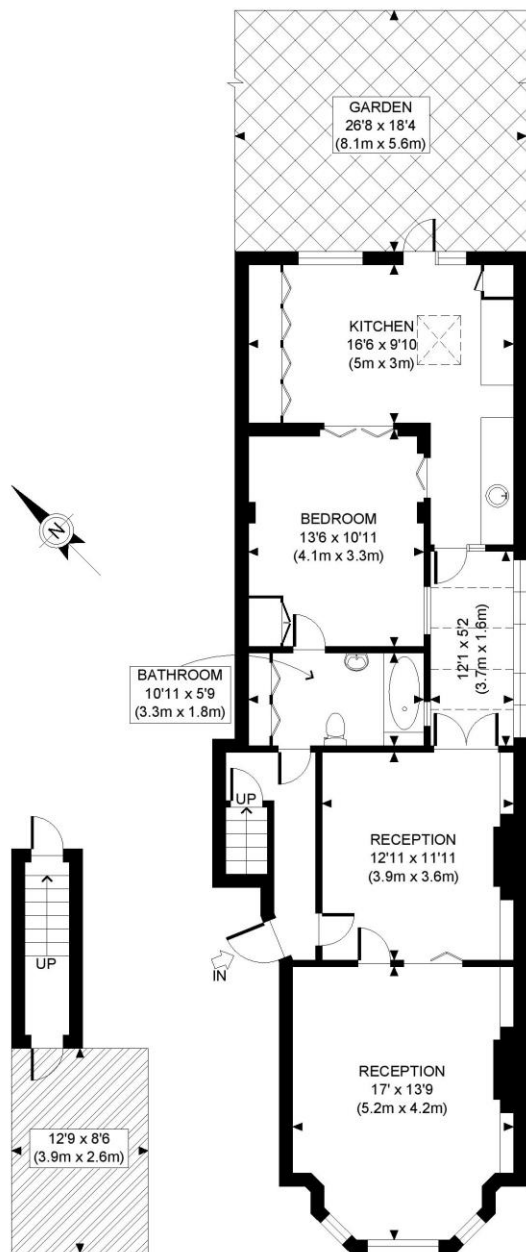


LOCAL AUTHORITY
Hammersmith & Fulham

TENURE
Share of Freehold.

PRICE: £650,000 Share of Freehold





BASEMENT
GROSS INTERNAL
FLOOR AREA 30 SQ FT

GROUND FLOOR
GROSS INTERNAL
FLOOR AREA 934 SQ FT

APPROX. GROSS INTERNAL FLOOR AREA: 964 SQ FT/ 90 SQM

PROPERTY PHOTO PLANS .CO.UK

ONE STOP SHOP FOR PROPERTY MARKETING

This plan is for illustrative purposes only and should be used as such by any prospective client. Whilst every attempt has been made to ensure the accuracy of the Floor Plan contained here, measurements of the doors, windows, rooms and any other items are approximate and no responsibility is taken for any errors, omissions, or misstatement. The services, systems and appliances shown have not been tested and no guarantee as to the operability or efficiency can be given.

The displayed square footage is taken from the floor plans with measurements created using the Royal Institute of Chartered Surveyors' Code of Practice for Measuring. These measurements are approximate and included for illustrative purposes only. Winkworth does not make any representation as to the accuracy of these measurements and you should seek to verify them for yourself. Winkworth accept no liability for any loss you may suffer if you rely on these measurements.

Shepherds Bush | 020 8735 3266 | shepherdsbush@winkworth.co.uk

Winkworth

for every step...