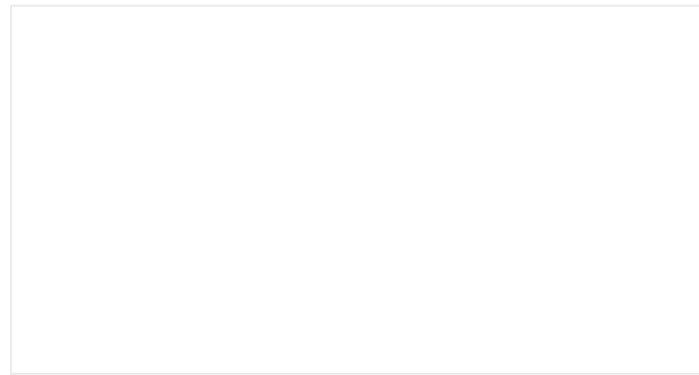
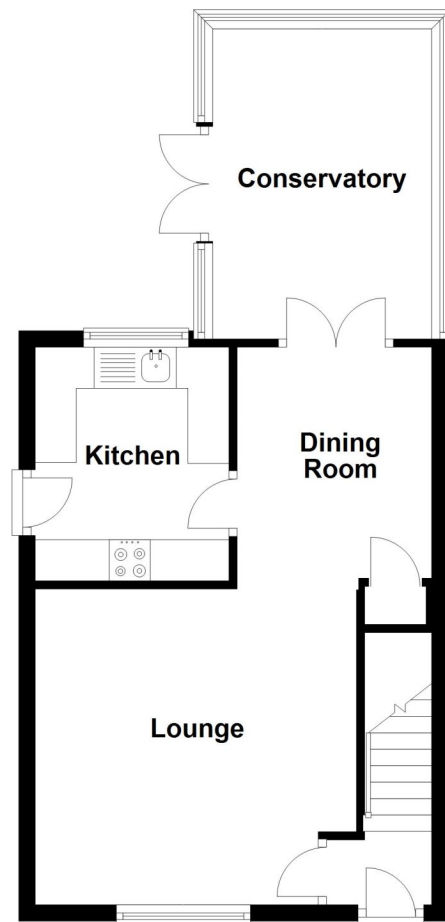


**Dorrington Close, Ruskington,
Sleaford**

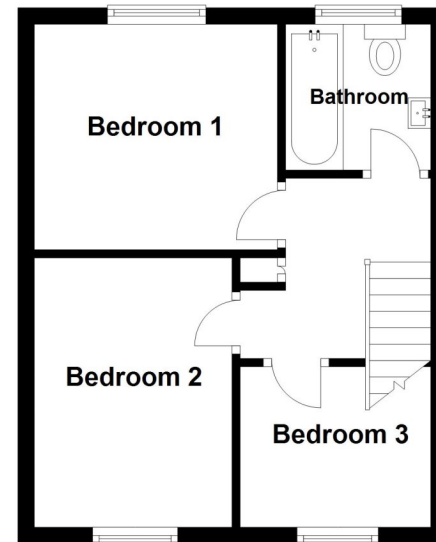
This floorplan is for illustration purposes only and is not to scale. The position and size of doors, windows, appliances and other features are approximate.



Ground Floor



First Floor



15 Dorrington Close, Ruskington, Sleaford, Lincolnshire, NG34 9EQ

£205,000 Freehold

NO CHAIN This Three Bedroom Semi-Detached Home is offered for sale with no onward chain positioned in the corner of a cul-de-sac location in the well served village of Ruskington. The accommodation comprises of Entrance Hall, Lounge, Dining Room, Kitchen, Conservatory, Three Bedrooms & a Family Bathroom. To the side of the property is a large gravelled driveway offering ample off street parking. The rear garden is a fantastic size and enclosed by fencing and hedging to all aspects, westerly aspected and non-overlooked. A viewing is highly advised.

NO CHAIN | AMPLE PARKING | LARGE REAR GARDEN | DETACHED GARAGE | CUL-DE-SAC POSITION | POPULAR VILLAGE LOCATION | CONSERVATORY | THREE WELL PROPORTIONED BEDROOMS

Winkworth

Winkworth Sleaford | 01529 303377 | sleaford@winkworth.co.uk

winkworth.co.uk/sleaford

See things differently.

Under the Property Misdescriptions Act 1991 these particulars are a guide and act as information only. All details are given in good faith and are believed to be correct at time of printing. Winkworth give no representation as to their accuracy and potential purchasers or tenants must satisfy themselves or otherwise as to their correctness. No employee of Winkworth has authority to make or give any representation or warranty in relation to this property.

Winkworth

See things differently.

ACCOMMODATION

Entrance Hall

Lounge - 12'10" x 12'7" (3.9m x 3.84m)

Dining Room - 11'1" x 9'4" (3.38m x 2.84m)

Kitchen - 9'4" x 7'9" (2.84m x 2.36m)

Conservatory - 12'5" x 8'9" (3.78m x 2.67m)

Bedroom One - 10'9" x 8' (3.28m x 2.44m)

Bedroom Two - 9'9" x 9' (2.97m x 2.74m)

Bedroom Three - 7'7" x 6'5" (2.3m x 1.96m)

Family Bathroom - 5'10" x 5'10" (1.78m x 1.78m)

LOCAL AUTHORITY

North Kesteven District Council

TENURE

Freehold

COUNCIL TAX BAND

B

