



Hartwood Road, Shepherd's Bush, W12

£500,000 Leasehold

A two bedroom ground floor Edwardian maisonette in this most sought after location.

Reception Room | Kitchen | 2 Bedrooms | Bathroom | Garden | 699 Sq Ft / 65 Sq M | Council Tax Band D
| EPC Rating Band D

Winkworth

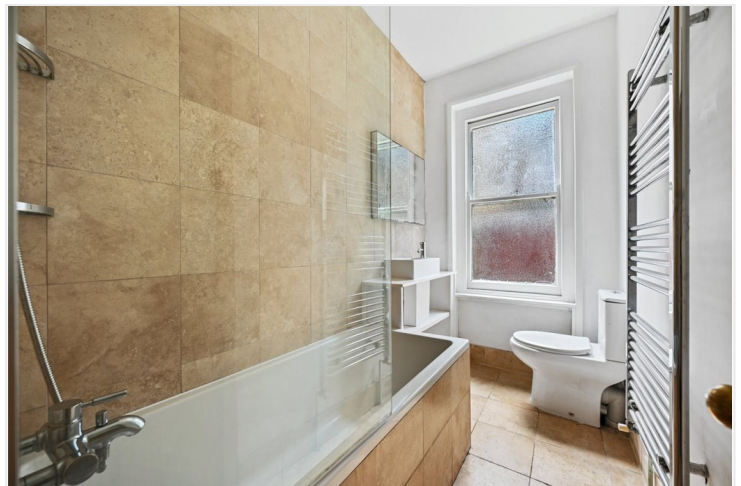


LOCATION

Hartwood Road is amongst the most sought after addresses in the area. An attractive tree lined street, in easy reach of both Askew Village and Chiswick, perfect for the numerous shops, pubs and restaurants which each offer. The closest Underground stations are Turnham Green and Stamford Brook.

DESCRIPTION

In need of some improvement, the property offers accommodation which comprises entrance hall, reception room, two bedrooms bathroom and kitchen. The property further benefits from a garden and its own private entrance. There is scope to reconfigure and improve, subject to the usual necessary consents.





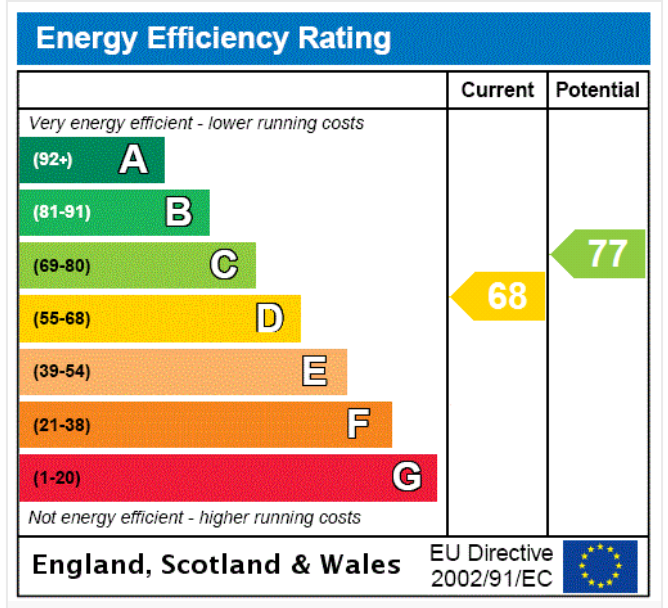
LOCAL AUTHORITY

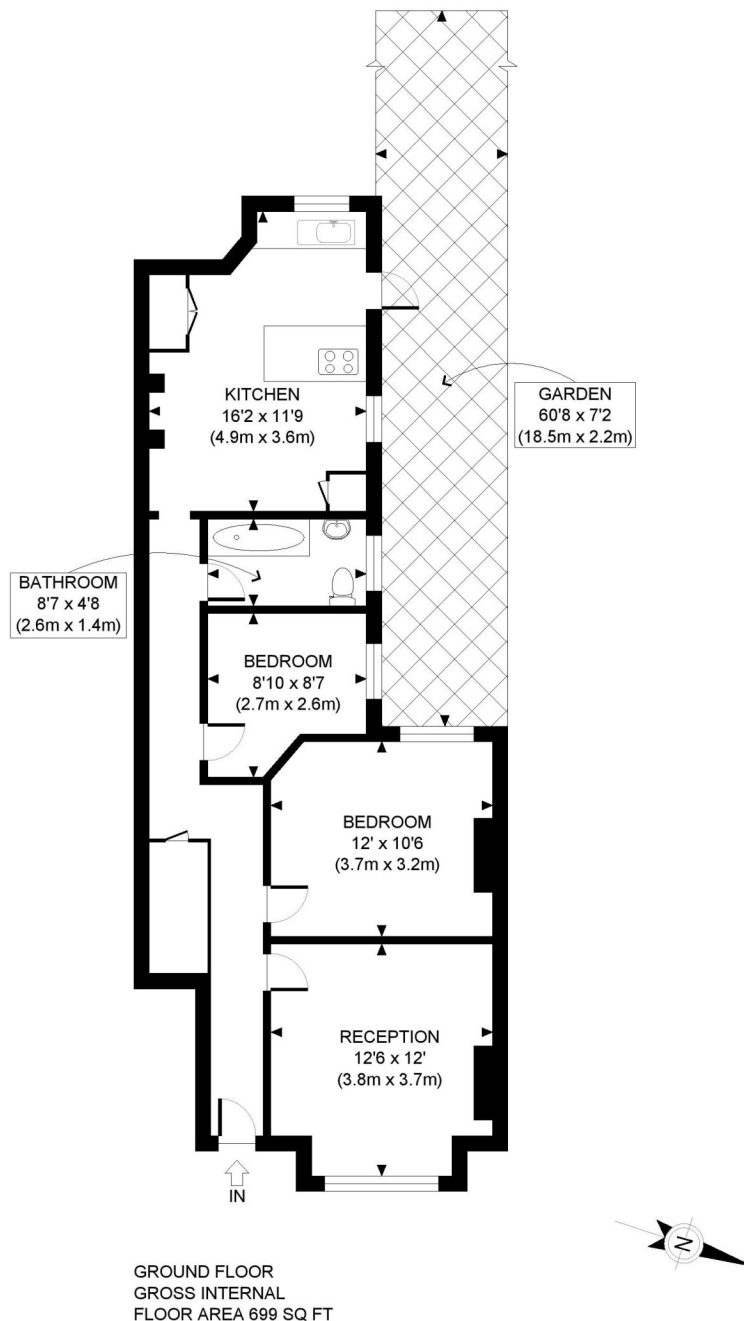
London Borough of Hammersmith & Fulham

TENURE

Leasehold.

PRICE: £500,000 Leasehold





APPROX. GROSS INTERNAL FLOOR AREA: 699 SQ FT/ 65 SQM

PROPERTY PHOTO PLANS.CO.UK
ONE STOP SHOP FOR PROPERTY MARKETING

This plan is for illustrative purposes only and should be used as such by any prospective client. Whilst every attempt has been made to ensure the accuracy of the Floor Plan contained here, measurements of the doors, windows, rooms and any other items are approximate and no responsibility is taken for any errors, omissions, or misstatement. The services, systems and appliances shown have not been tested and no guarantee as to the operability or efficiency can be given.

The displayed square footage is taken from the floor plans with measurements created using the Royal Institute of Chartered Surveyors' Code of Practice for Measuring. These measurements are approximate and included for illustrative purposes only. Winkworth does not make any representation as to the accuracy of these measurements and you should seek to verify them for yourself. Winkworth accept no liability for any loss you may suffer if you rely on these measurements.

Shepherds Bush | 020 8735 3266 | shepherdsbush@winkworth.co.uk



for every step...

Under the Property Misdescriptions Act 1991, these Particulars are a guide and act as information only. All details are given in good faith and are believed to be correct at time of printing. Winkworth give no representation as to their accuracy and potential purchasers or tenants must satisfy themselves by inspection or otherwise as to their correctness. No employee of Winkworth has authority to make or give any representation or warranty in relation to this property.