



**Reynolds Court, Romsey, Hampshire, SO51 5AX**







## STYLISH TWO BEDROOM APARTMENT

We are delighted to offer this beautifully presented two double bedroom apartment located a short level walk from Romsey town centre, and close to Tadburn Meadows nature reserve. Locally there is a well-stocked convenience store. More extensive amenities can be found in Romsey a delightful old market town that has retained much of its character. Facilities include a range of individual shops, schools, leisure facilities, doctors and dentist surgeries and public transport by way of bus and rail services. The M27 can be accessed at junction 3, about 3 ½ miles distant. The major centres of Salisbury, Southampton, Winchester and Portsmouth are all easily accessed.

This beautifully presented, first floor apartment is situated on the popular Tadburn Estate. The property has been updated by the current owner to provide modern and stylish accommodation. The spacious apartment is light and airy throughout, with views over the lovely communal gardens. The accommodation comprises a large living/dining room with feature fireplace and double doors onto the balcony. The separate kitchen is fitted with a wide range of eye and base level units. There are two large double bedrooms with built-in wardrobes, and a modern shower room. Further storage cupboards can be found in the entrance hall.

Outside there are well tended communal gardens, a single garage with parking in front for one car. Viewing is strongly recommended to appreciate the size and location of this lovely property.

**Service Charge £1,400 pa**  
**999 year lease dating from 1<sup>st</sup> March 1965**  
**Ground rent £10 per annum**





# Winkworth

**Address: Reynolds Court, Romsey  
SO51 5AX**

**Council Tax: Band 'B'  
Leasehold**



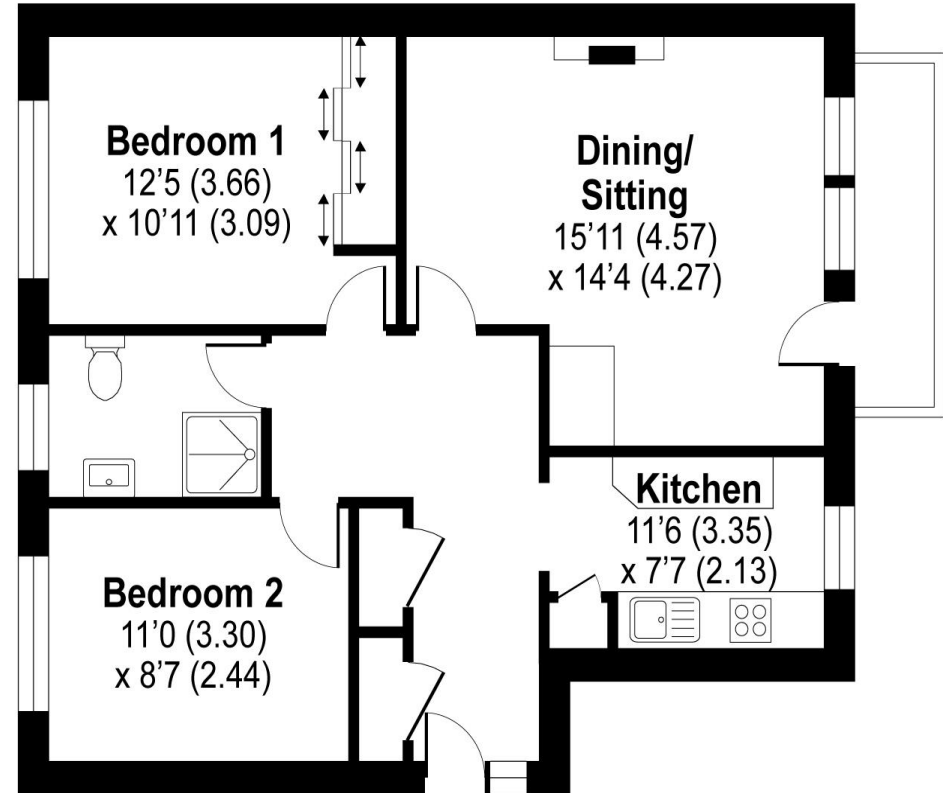
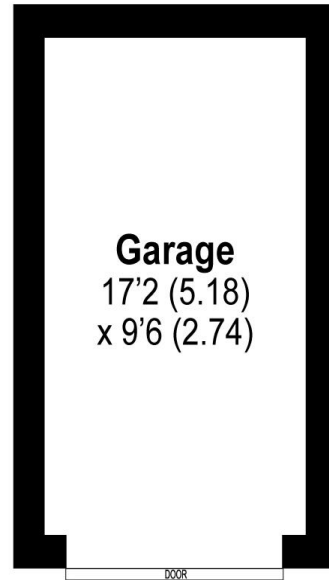
## REYNOLDS COURT TADBURN ROAD, ROMSEY

Approximate Area = 613 sq ft / 57 sq m

Outbuilding = 150 sq ft / 14 sq m

Total = 763 sq ft / 71 sq m

For identification only - Not to scale



[winkworth.co.uk/romsey](http://winkworth.co.uk/romsey)

### Winkworth Romsey

18 Market Place, Romsey, Hampshire, SO51 8NA  
01794 511911 | [romsey@winkworth.co.uk](mailto:romsey@winkworth.co.uk)

[winkworth.co.uk/romsey](http://winkworth.co.uk/romsey)

### Winkworth Winchester

2 Black Swan Buildings, Southgate Street,  
Winchester, Hampshire, SO23 9DT  
01962 866777 | [winchester@winkworth.co.uk](mailto:winchester@winkworth.co.uk)

### Winkworth Mayfair & Country House Department

11 Berkeley Street, Mayfair, London, W1J 8DS  
020 7871 0589 | [countryhouse@winkworth.co.uk](mailto:countryhouse@winkworth.co.uk)

# Winkworth

See things differently