



WARWICK SQUARE, SW1V

£600,000

SHARE OF FREEHOLD

At a glance...

- One Bedroom Flat
- Share of Freehold
- Overlooking Garden Square
- Grade II Listed Building
- c.523 sq ft
- Council Tax Band: F

Winkworth

for every step...



WARWICK SQUARE, SW1V

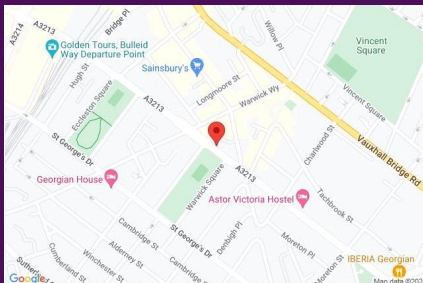
£600,000

SHARE OF FREEHOLD

Located overlooking the prestigious Warwick Square this flat offers a lovely green outlook considering its central SW1 location. The flat itself comprises some 523 sq ft meaning the bedrooms and reception room particularly are a great size and both these principal rooms offer nice views - the reception room over Warwick Square and the bedroom across a great London skyline.

The flat is presented in good condition and perfectly move-in ready although some purchasers may be excited to give the apartment a 'refresh' in order to suit their own tastes.

With a share of the freehold and in an incredible central London location this flat would make an ideal pied-a-terre or 1st time buy.

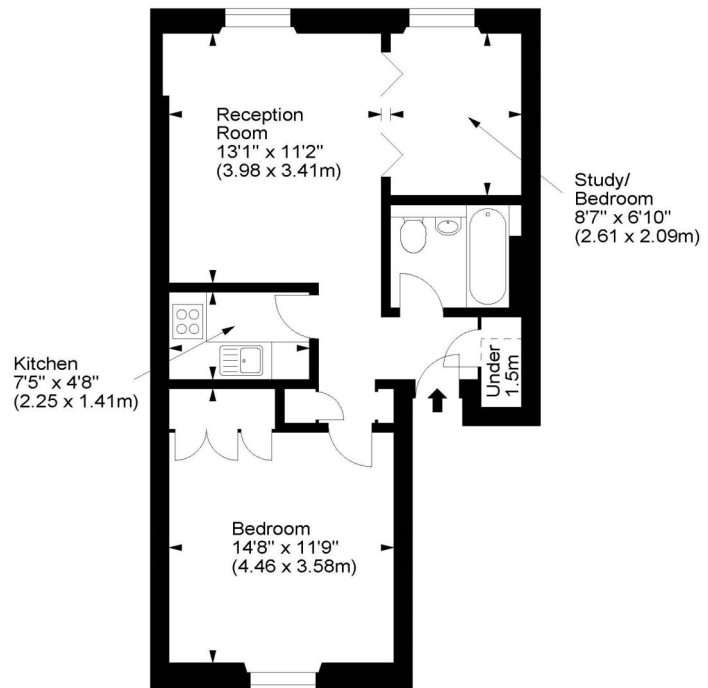


winkworth wishes to inform prospective buyers and tenants that these particulars are a guide and act as information only. All our details are given in good faith and believed to be correct at the time of printing but they don't form part of an offer or contract. No Winkworth employee has authority to make or give any representation or warranty in relation to this property. All fixtures and fittings, whether fitted or not are deemed removable by the vendor unless stated otherwise and room sizes are measured between internal wall surfaces - including fire-chimneys.

Warwick Square, SW1



Approx. Gross Internal Area
523 Sq Ft - 48.59 Sq M



Third Floor

For illustration purposes only. Not to scale.
All measurements are taken and shown at floor level.
www.r3photography.co.uk © Photography / Floor Plans / Lease Plans / EPCs



Pimlico & Westminster

020 7828 1786

pimlico@winkworth.co.uk

winkworth.co.uk/pimlico-westminster

Winkworth

for every step...