



ALLUM LANE, BOREHAMWOOD, HERTFORDSHIRE, WD6
£400,000 SHARE OF FREEHOLD

CHAIN FREE, THREE BEDROOM GROUND FLOOR MAISONETTE

Borehamwood | 020 8953 8899 | borehamwood@winkworth.co.uk



DESCRIPTION:

Positioned in a quiet, sought-after cul-de-sac just off Allum Lane is this rarely available three bedroom maisonette.

Offered for sale chain free, the property offers in excess of 900 square feet of flexible and well proportioned accommodation consisting of three bedrooms, reception room and kitchen/diner. Meticulously maintained grounds surround the property to both the front and rear, whilst also benefiting from its own section of garden to the rear and a garage en bloc.

Located approx. 1/3 mile walk from Elstree and Borehamwood Thameslink station and the nearby High Street, with its multitude of shops and restaurants, the property is ideal for both first time buyers and downsizers alike. Viewings come highly recommended.

AT A GLANCE

- 3 Bedrooms
- Entrance Hall
- Reception Room
- Kitchen
- Bathroom
- Garage
- Garden





Winkworth



Winkworth



Winkworth



Winkworth



Winkworth

Approximate Gross Internal Area = 87.8 sq m / 945 sq ft
 Garage = 12.9 sq m / 139 sq ft
 Total = 100.7 sq m / 1084 sq ft

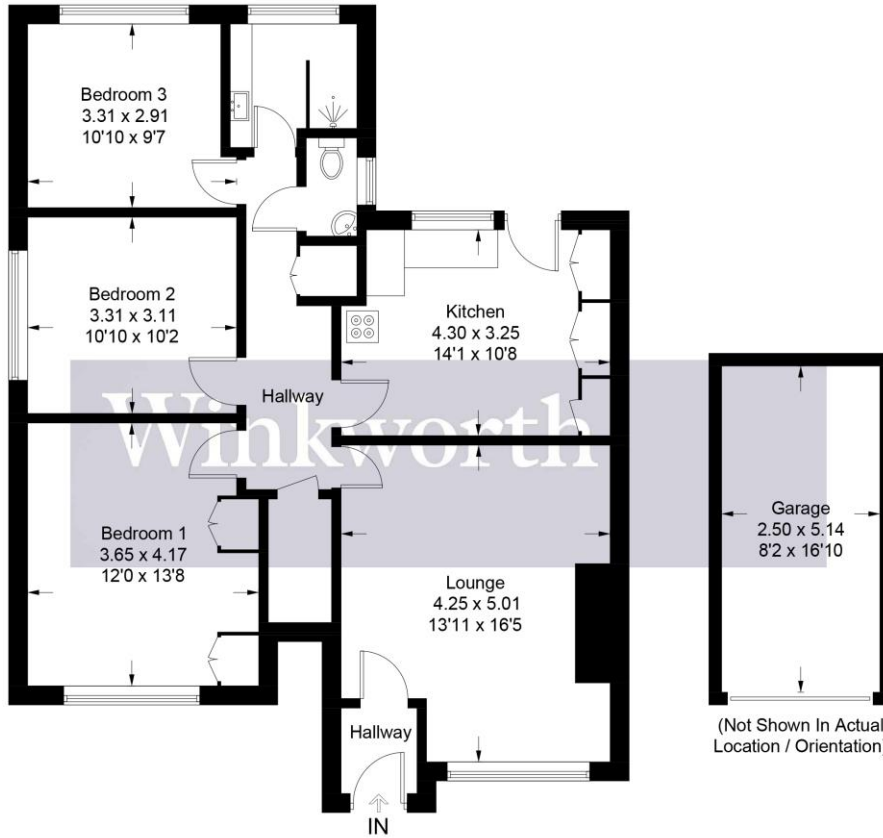
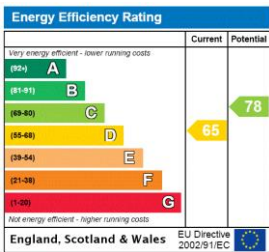


Illustration for identification purposes only, measurements are approximate, not to scale. Winkworth © 2024 (ID1131063)

This floorplan is for illustration purposes only and is not to scale. The position and size of doors, windows, appliances and other features are approximate.



Tenure: Share of Freehold

Term: 126 year and 1 months

Service Charge: £731 per annum

Ground Rent: £ 0 Annually (subject to increase)

Council Tax Band: D

Where no figures are shown, we have been unable to ascertain the information. All figures that are shown were correct at the time of printing.