



Carter Street, London, SE17

£359,950 Leasehold

A stunning one-bedroom flat on the raised ground floor of this period property with a south facing balcony, located close to Kennington Underground Station.

LOCATION

Carter Street is located between Chapter Road and Penrose Street, west of famous and vibrant Walworth Road. Additionally the flat is very close to the newly regenerated Elephant and Castle, including walking distance to Sayer Street, where you will find bars and restaurants.

DESCRIPTION

You enter into the flat via a private front door and into the open plan kitchen/reception room. The space has high ceilings and period features including a beautiful sash window looking onto the quiet street. There is also engineered wooden flooring.

The modern fully fitted kitchen has white gloss units and wooden worktops, which offer plenty of storage and worktop space - the latter helped by a kitchen island. The kitchen comes with integrated appliances.

Double doors lead to the bedroom at the rear, which is a great size. The bedroom has access to the south east facing balcony.

Attached to the bedroom is the en-suite bathroom with w/c, sink, bath and integrated washing machine.

Residents parking permits are available from Southwark Council.

SERVICE CHARGE, GROUND RENT AND COUNCIL TAX

Service Charge - £495.00 per annum

Ground Rent - £5.00 per annum

Council Tax Band - B

UTILITIES

Electricity – mains connected

Gas – mains connected

Water – mains connected no meter

Heating – gas central heating

Sewerage – mains connected

Broadband – superfast broadband

LOCAL AUTHORITY

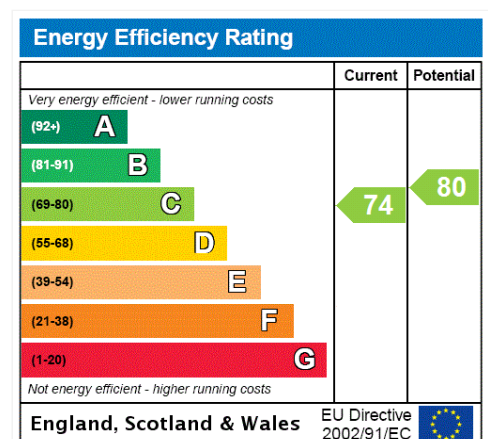
Southwark Council

TENURE

Leasehold - 125 years (less 7 days) from 20 March 2000

DIRECTIONS

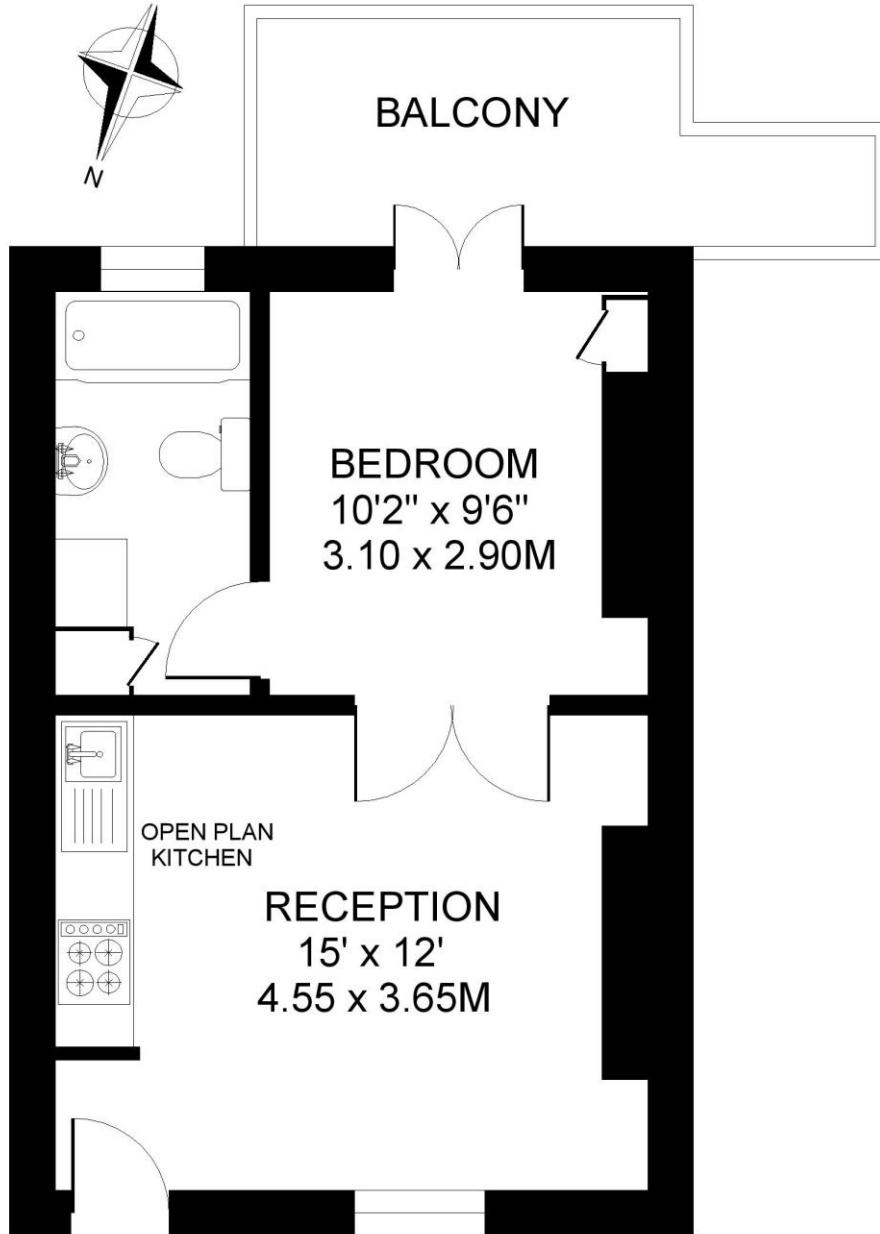
Kennington Underground (Northern line) is only 650 metres walk. Also both Walworth and Kennington Park Road offer a frequent bus service into Central London. Lastly you can also cycle to Westminster in circa 15 minutes.





CARTER STREET. SE17
1 BEDROOM FLAT

Approximate gross floor area
338 SQ.FT / 31.4 SQ.M.



UPPER GROUND FLOOR

This floorplan is for illustration purposes only and is not to scale. The position and size of doors, windows, appliances and other features are approximate.

Copyright: These plans should not be reproduced by any other person, without permission.
Floorplan produced for Winkworth by Floorplanners 07801 228850

Kennington | 020 7587 0600 | kennington@winkworth.co.uk