



Ashley Close, Winchester, Hampshire, SO22 6LR





Ashley Close, Winchester, Hampshire, SO22 6LR

## Well-Presented Bungalow in Peaceful Location with Superb Garden Studio

A super two-bedroom bungalow offering spacious, light-filled accommodation throughout, in a peaceful cul-de-sac. Ashley Close is conveniently positioned for easy access to the local amenities including Waitrose, Aldi, the doctors' surgery, pharmacy, newsagents, bus stop (at the end of the Close) and schools.

The spacious hallway first gives access to the stylish kitchen to the front of the property. The kitchen has a lovely, modern feel to it and has space for a breakfast table. Fitted with sleek units providing plenty of base and eye-level storage, there is also ample space for appliances. Beyond the kitchen is a generous sitting/dining room with inset woodburner, attractive parquet-style floor and views over the well-maintained garden courtesy of a modern, double doors, and a further single, glazed door. The lovely principal bedroom to the rear has a built-in wardrobe and also enjoys access directly to the garden via double doors. The second bedroom and attractive contemporary shower room complete the internal accommodation.

To the rear is a pretty, predominantly south-facing garden which is manageable, enclosed and bordered by well-stocked beds containing an array of shrubs and plants. A patio lies directly behind the bungalow with an additional paved seating area to the rear while the remainder of the garden is laid to lawn. There is a superb studio at the rear of the garden - perfect for artists or those who wish to work from home. An open-plan garden, dissected by a paved path, lies to the front and the property benefits from a garage in a block.

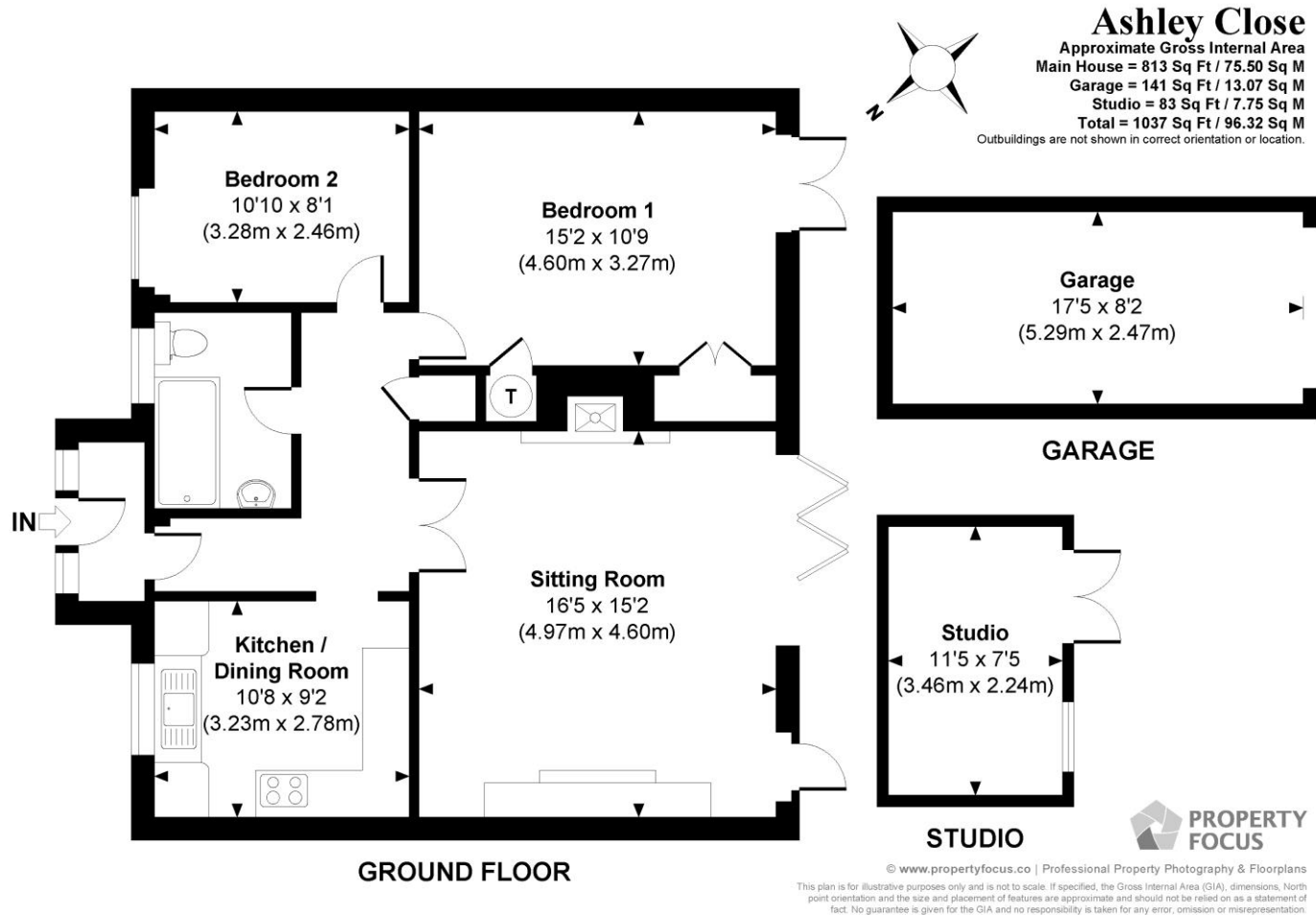








## Ashley Close, Winchester, Hampshire, SO22 6LR



### Directions

From the Winkworth office in Winchester, proceed to the end of Southgate Street, turning left into High Street. At the mini roundabout, take the second exit into Upper High Street and turn left over the railway bridge. At the mini roundabout, turn right and proceed onto Stockbridge Road. Follow Stockbridge Road to the mini roundabout, turning right into Bereweke Road. Take the third exit into Bereweke Avenue and proceed straight over Stoney Lane. Proceed along Priors Dean Road, turning left onto Bradley Road. Take the sixth turning on the right into Ashley Close

### Location

Ashley Close is conveniently situated for local shops and bus routes into the centre of Winchester with its mainline railway station (links to London Waterloo in about 60 minutes), high street shops, boutiques, library, coffee shops, public houses, restaurants, theatre, cinema, museums and, of course, the City's historic cathedral. The M3 motorway and A34 are also easily accessible. The property is within catchment for Harestock Primary and Henry Beaufort Secondary Schools and just a short distance to the highly acclaimed Peter Symonds Sixth Form College.

**Tenure:** To be advised

### Services

Mains gas, electricity, water and drainage

### Winchester City Council

**Council tax band:** C

**EPC rating:** D

### Viewings

Strictly by appointment with Winkworth Winchester Office

[Winkworth.co.uk/winchester](http://Winkworth.co.uk/winchester)

### Winkworth Winchester

2 Black Swan Buildings, Southgate Street, Winchester, SO23 9DT  
01962 866 777 | [winchester@winkworth.co.uk](mailto:winchester@winkworth.co.uk)

### Winkworth Country House Department

13 Charles II Street, St James's, London, SW1Y 4QU  
020 7870 4878 | [countryhouse@winkworth.co.uk](mailto:countryhouse@winkworth.co.uk)

**Winkworth**

See things differently