



DUNSTANS ROAD, EAST DULWICH, LONDON, SE22
£625,000 SHARE OF FREEHOLD

AN EXCEPTIONAL, SPLIT LEVEL TWO DOUBLE
BEDROOM FLAT, SITUATED ON A QUIET
RESIDENTIAL STREET IN SE22.

Dulwich | 020 8299 2722 | dulwich@winkworth.co.uk

Winkworth



DESCRIPTION:

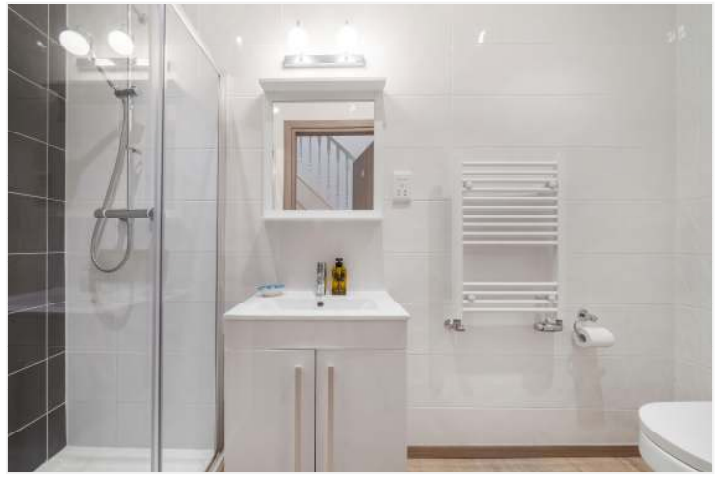
This stunning split level flat is offered to the market in remarkable condition. Boasting two double bedrooms, a spacious open-plan kitchen-diner with built in appliances, breakfast bar and spacious private section of garden with impressive views.

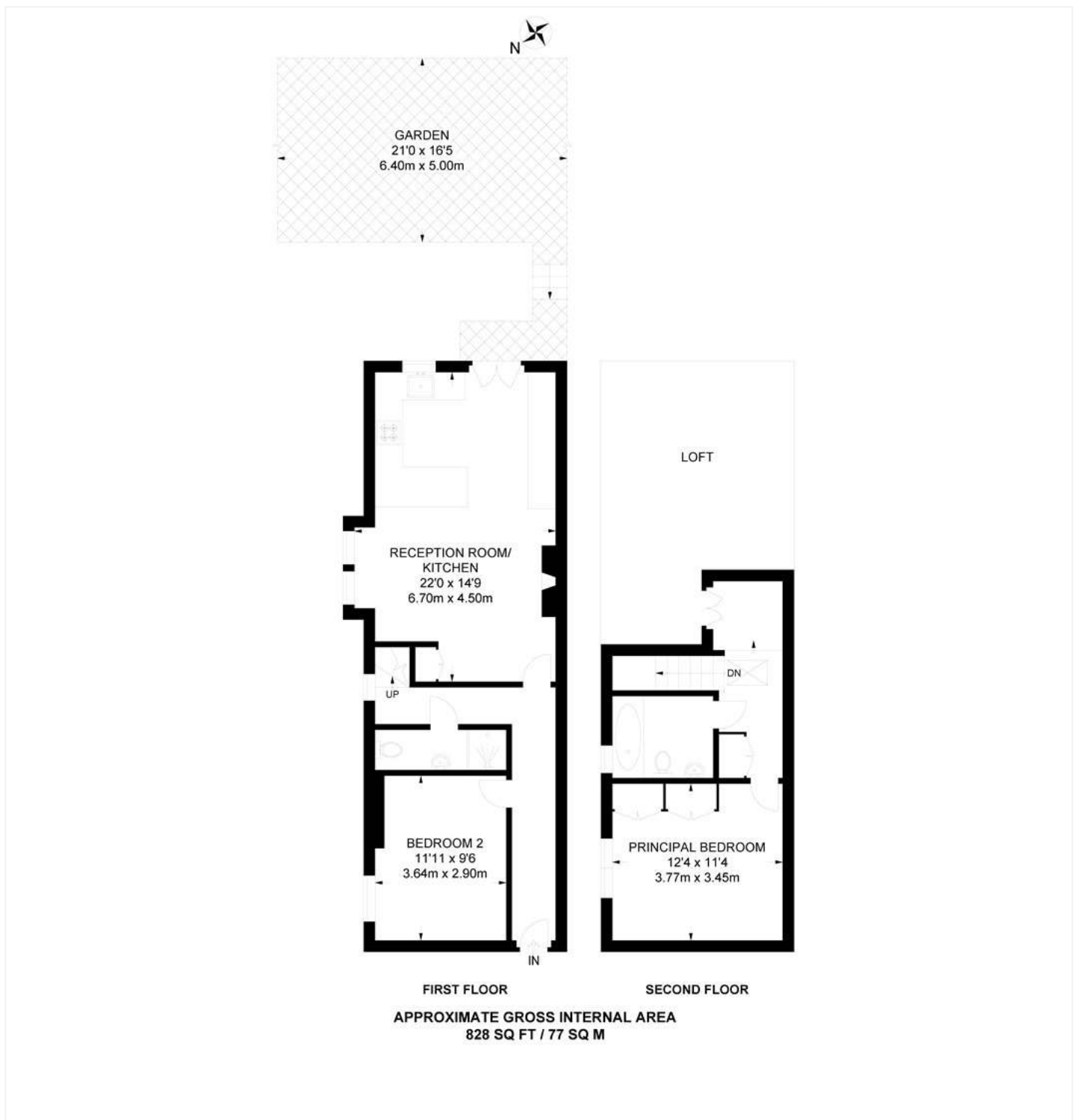
The property is situated on Dunstons Road, a stones throw from local, popular primary schools and a short walk to Lordship Lane and Dulwich Park. Transport links are provided via multiple bus links on Lordship Lane, trains to London Bridge from East Dulwich station, East London overground line at Forest Hill or a short bus to Denmark Hill for the overground.

AT A GLANCE

- Two Double Bedrooms
- Split Level Flat
- Open Planned Kitchen-Diner-Reception
- Private Section Of Garden
- Close To Dulwich Park
- Share Of Freehold







This floorplan is for illustration purposes only and is not to scale. The position and size of doors, windows, appliances and other features are approximate.

Energy Efficiency Rating		Current	Potential
Very energy efficient - lower running costs			
(92)	A		
(81-91)	B		
(69-80)	C	69	75
(55-68)	D		
(39-54)	E		
(21-38)	F		
(1-20)	G		
Not energy efficient - higher running costs			
England, Scotland & Wales		EU Directive 2002/91/EC	

Dulwich | 020 8299 2722 | dulwich@winkworth.co.uk



winkworth.co.uk

See things differently

Winkworth wishes to inform prospective buyers and tenants that these particulars are a guide and act as information only. All our details are given in good faith and believed to be correct at the time of printing but they don't form part of an offer or contract. No Winkworth employee has authority to make or give any representation or warranty in relation to this property. All fixtures and fittings, whether fitted or not are deemed removable by the vendor unless stated otherwise and room sizes are measured between internal wall surfaces, including furnishings.