



TAMAR HOUSE, READING, BERKSHIRE, RG1 1LG
£1,595 PER MONTH FURNISHED

MODERN TWO BEDROOM APARTMENT LOCATED ON THE FIRST FLOOR OF TAMAR HOUSE IN THE HEART OF READING TOWN CENTRE

Reading | 0118 4022 300 | reading@winkworth.co.uk

Winkworth

for every step...

winkworth.co.uk



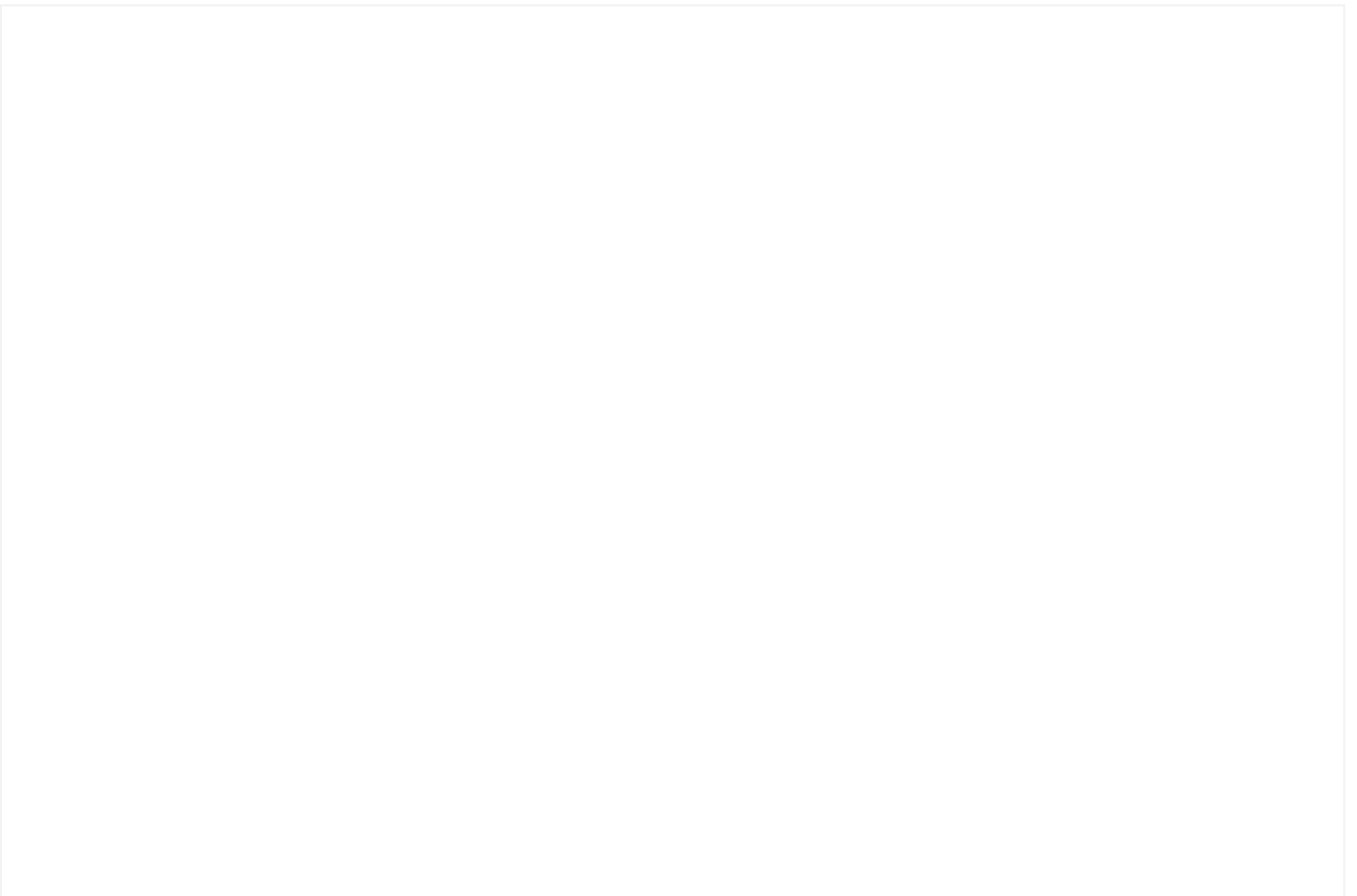
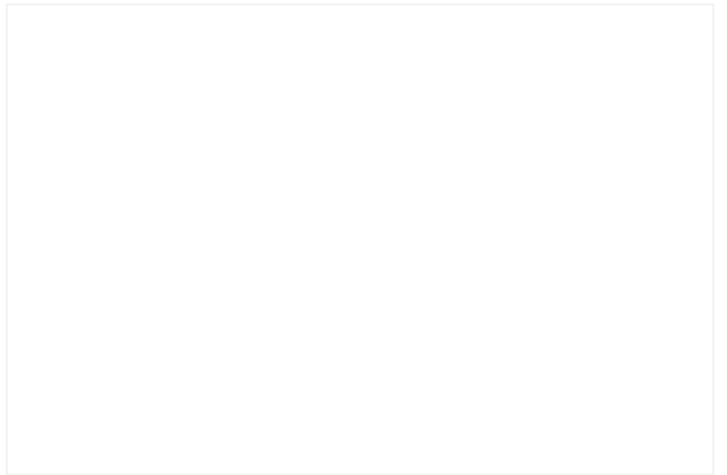
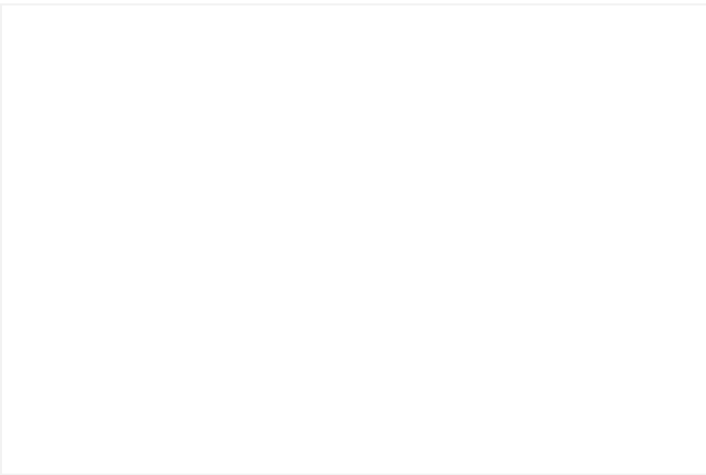
DESCRIPTION:

Modern two bedroom first floor apartment located in Tamar House in the heart of Reading town centre, a short walk from Reading train station. The property comprises a spacious living room with open plan kitchen benefitting from integrated appliances, two double bedrooms with an en suite shower room to the master bedroom and a modern three piece bathroom. Benefits also include bike storage and lift access. (No parking) Available 18th November 2024. Furnished.

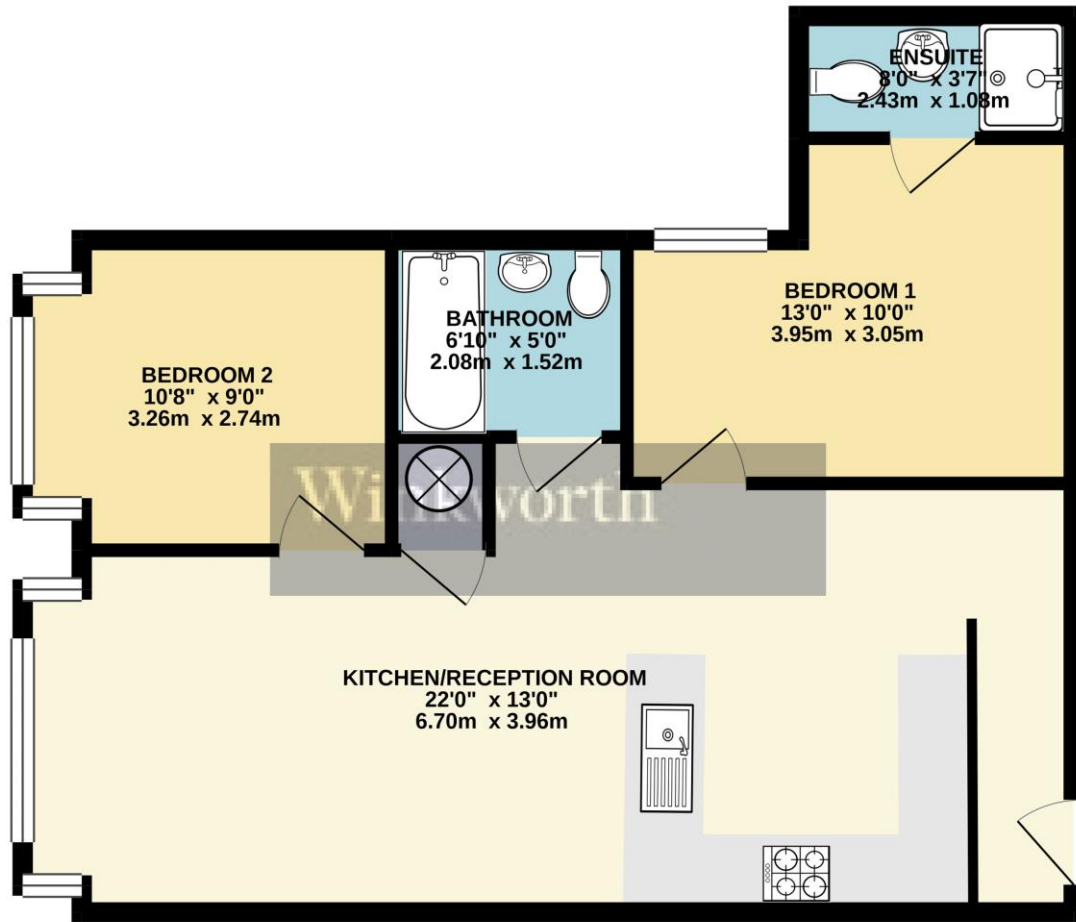
AT A GLANCE

- Town centre apartment
- Two double bedrooms
- First floor
- Two bathrooms
- Council tax band D
- No parking
- Available 18th November
- Furnished





FIRST FLOOR
636 sq.ft. (59.1 sq.m.) approx.



TOTAL FLOOR AREA : 636 sq.ft. (59.1 sq.m.) approx.
 Whilst every attempt has been made to ensure the accuracy of the floorplan contained here, measurements of doors, windows, rooms and any other items are approximate and no responsibility is taken for any error, omission or mis-statement. This plan is for illustrative purposes only and should be used as such by any prospective purchaser. The services, systems and appliances shown have not been tested and no guarantee as to their operability or efficiency can be given.
 Made with Metropix ©2021

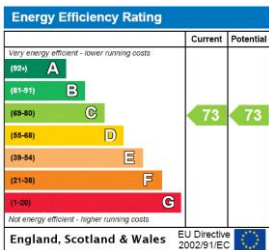
This floorplan is for illustration purposes only and is not to scale. The position and size of doors, windows, appliances and other features are approximate.

Deposit: £1,840.38

Holding Deposit: £368.07

Council Tax Band: D

Where no figures are shown, we have been unable to ascertain the information. All figures that are shown were correct at the time of printing.



Reading | 0118 4022 300 | reading@winkworth.co.uk



for every step...

winkworth.co.uk

Winkworth wishes to inform prospective buyers and tenants that these particulars are a guide and act as information only. All our details are given in good faith and believed to be correct at the time of printing but they don't form part of an offer or contract. No Winkworth employee has authority to make or give any representation or warranty in relation to this property. All fixtures and fittings, whether fitted or not are deemed removable by the vendor unless stated otherwise and room sizes are measured between internal wall surfaces, including furnishings.