



ALTIMA COURT, EAST DULWICH ROAD, EAST DULWICH, LONDON, SE22  
**£465,000 LEASEHOLD**

## A LARGE, SPACIOUS, TWO DOUBLE BEDROOM FLAT SITUATED WITHIN A HIGHLY SOUGHT AFTER BLOCK IN SE22.

### DESCRIPTION:

This lovely flat comprises two large double bedrooms, one of which is en-suite with a shower room, a large family bathroom, and spacious open plan kitchen/ reception. The property offers a private balcony overlooking Goose Green. The location is superb, nestled perfectly between Lordship Lane and Bellenden Road and also between Goose Green Park and Peckham Rye Park. Transport links are provided via Peckham Rye for the overground and East Dulwich for direct links to London Bridge.

### AT A GLANCE

- Two Double Bedrooms
- Two Bathrooms
- Spacious Open-plan Kitchen/Reception
- Private Balcony with City Views
- Great Location

Dulwich | 020 8299 2722 | [dulwich@winkworth.co.uk](mailto:dulwich@winkworth.co.uk)

Tenure Leasehold | Council Tax Band D – London Borough of Southwark | Service Charge TBC | Ground Rent TBC

[winkworth.co.uk](http://winkworth.co.uk)

**Winkworth**

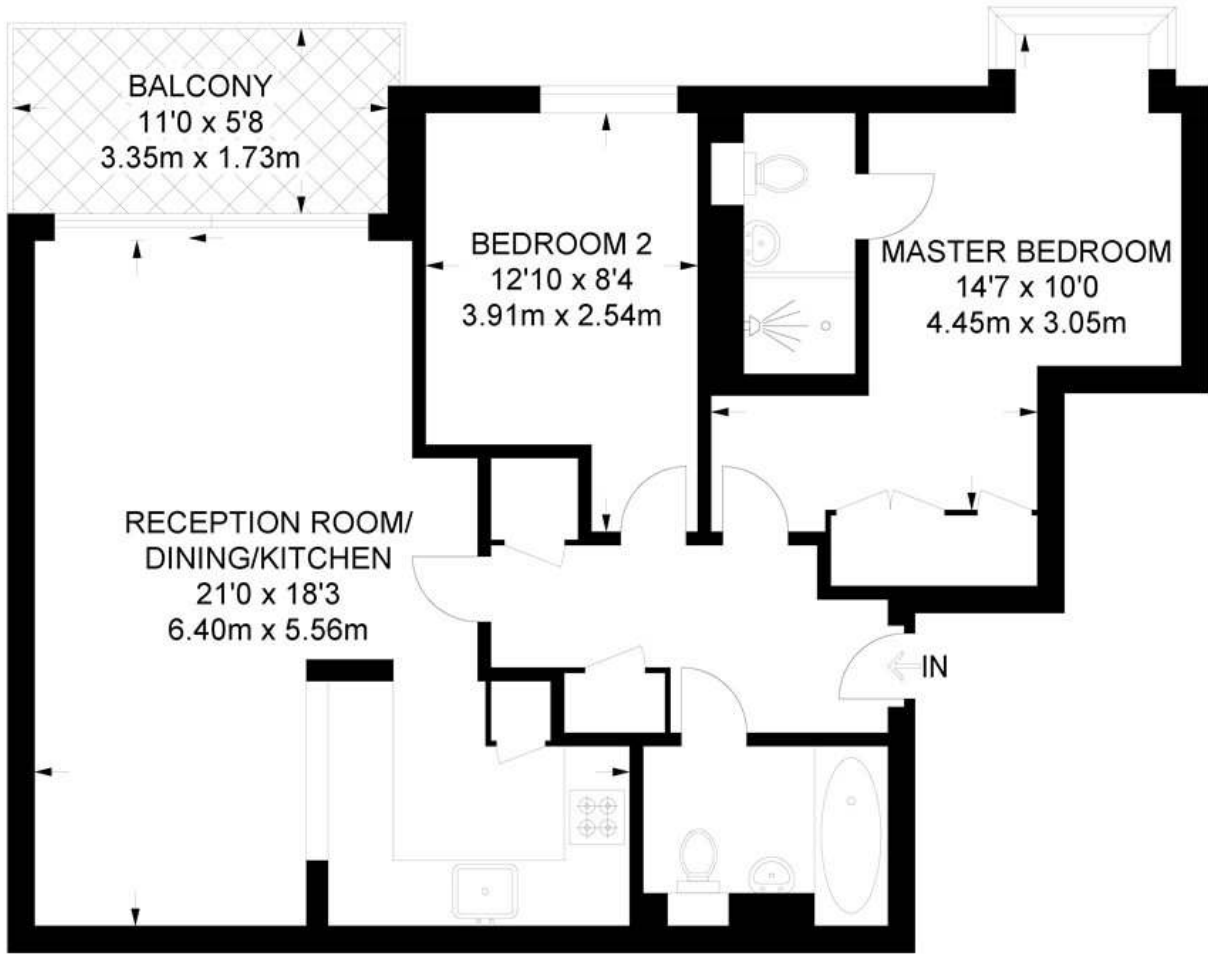
See things differently







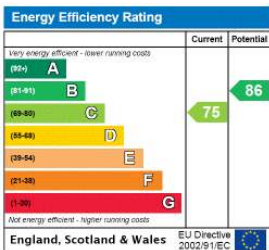




**SECOND FLOOR**

**APPROXIMATE GROSS INTERNAL AREA  
716 SQ FT / 66.5 SQ M**

This floorplan is for illustration purposes only and is not to scale. The position and size of doors, windows, appliances and other features are approximate.



Dulwich | 020 8299 2722 | dulwich@winkworth.co.uk



winkworth.co.uk

See things differently

Winkworth wishes to inform prospective buyers and tenants that these particulars are a guide and act as information only. All our details are given in good faith and believed to be correct at the time of printing but they don't form part of an offer or contract. No Winkworth employee has authority to make or give any representation or warranty in relation to this property. All fixtures and fittings, whether fitted or not are deemed removable by the vendor unless stated otherwise and room sizes are measured between internal wall surfaces, including furnishings.