



MANOR DRIVE, WEMBLEY, MIDDLESEX, HA9
£650,000 FREEHOLD

**THREE BEDROOM SEMI-DETACHED BLANK
CANVAS IN A MUCH-LOVED RESIDENCE.**

Kingsbury | 020 8204 0000 | kingsbury@winkworth.co.uk

Winkworth

for every step...

winkworth.co.uk



DESCRIPTION: Making its appearance on the market for the first time in 50 years is this amazing blank canvas, positioned in the enchanting residence of Manor Drive. Flaunting excellence and opportunity in numerous aspects and hosting off-street parking for two cars, a spacious living room offering unobstructed views and access of the garden. It also features a fair-sized kitchen, with side-door access to the detached side of the house which presents huge scope to extend (STPP). Three bedrooms and a family bathroom serve the upper floor. A great starting base for a growing family who would like to consider expanding the property upwards create to a further level (STPP). Conveniently located close to amenities, excellent transport links, schools, and places of worship in Wembley, Kingsbury, and Neasden. This is an amazing chance to create your dream family home, not to be missed out on. An internal viewing is advised.

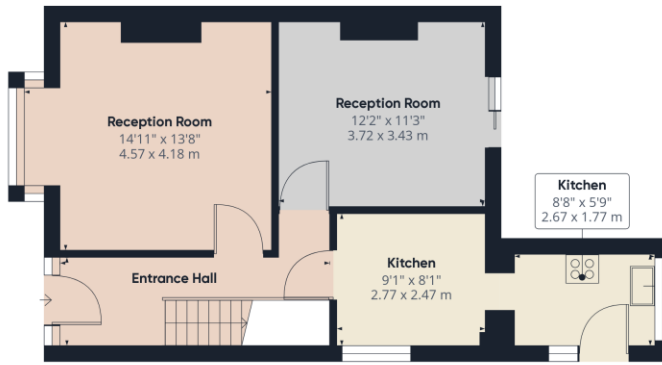


for every step...

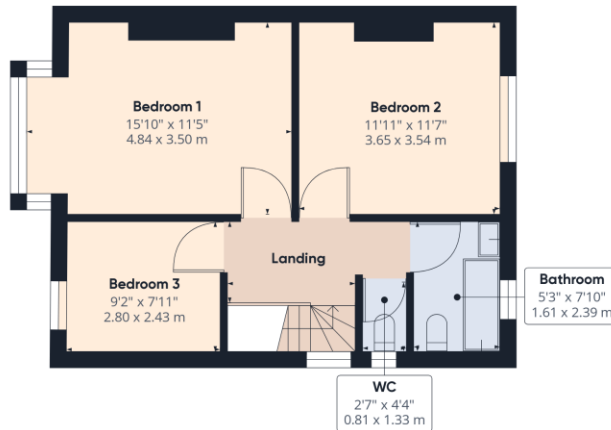


Winkworth

for every step...



Ground Floor



Floor 1

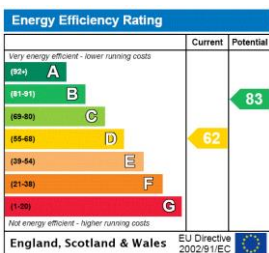
Approximate total area¹⁾
1035.37 ft²
96.19 m²

Excluding balconies and terraces

While every attempt has been made to ensure accuracy, all measurements are approximate, not to scale. This floor plan is for illustrative purposes only.

GIRAFFE360

This floorplan is for illustration purposes only and is not to scale. The position and size of doors, windows, appliances and other features are approximate.



Tenure: Freehold

Council Tax Band: E - Brent

Where no figures are shown, we have been unable to ascertain the information. All figures that are shown were correct at the time of printing.

Kingsbury | 020 8204 0000 | kingsbury@winkworth.co.uk