

Winkworth

Trentham Street, Southfields, SW18 5AS





A lovely Edwardian garden maisonette located on the ever-popular Southfields 'Grid'. This property offers approximately 725 sq. ft. and benefits from two double bedrooms, a reception room, kitchen with breakfast bar, a family bathroom, excellent storage space and garden room opening on to a private garden. Sold with a Share of the Freehold and no onward chain.

Trentham Street is one of the prime residential roads forming part of the popular Southfields 'Grid'. Well located for Southfields Village and Underground Station (District Line) as well as Earlsfield Station (mainline to Waterloo).


- Edwardian Maisonette
- Private Garden
- Two Double Bedrooms
- Reception Room
- Separate Kitchen
- Southfields Grid
- No Onward Chain

Trentham Street, Southfields, SW18 5AS



Share of Freehold

Internal area
 Approximate gross internal area:
Total 725 sq ft/ 67.4 sq m

Energy Efficiency Rating		Current	Potential
<i>Very energy efficient - lower running costs</i>			
(92+)	A		
(81-91)	B		
(69-80)	C		
(55-68)	D	63	65
(39-54)	E		
(21-38)	F		
(1-20)	G		
<i>Not energy efficient - higher running costs</i>			
England, Scotland & Wales		EU Directive 2002/91/EC 	

Trentham Street, Southfields, SW18 5AS



Trentham Street

Approximate Gross Internal Area Total
67.4 sq m / 725 sq ft
(Excluding Shed)

Winkworth

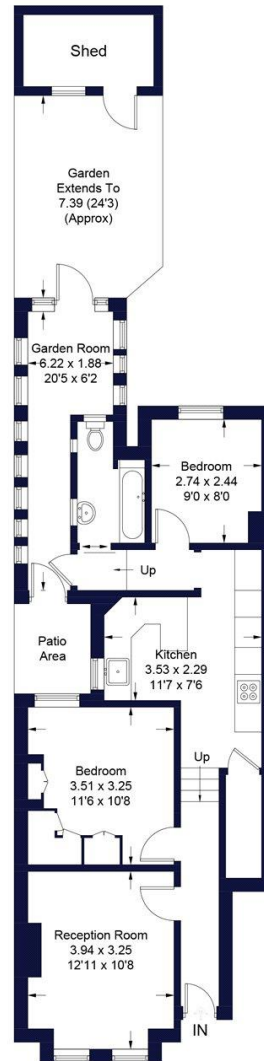


Illustration for identification purposes only, measurements are approximate, not to scale. FloorplansUsketch.com © 2018 (ID453190)

W621 Ravensworth 01670 713330

Winkworth

Under the Property Misdescriptions Act these particulars are intended as a guide and act as information only. They give a fair overall description for the guidance of potential purchasers or tenants but do not constitute an offer or part of a contract. All details and approximate measurements are given in good faith and are believed to be correct at the time of printing, but any potential purchasers or tenants should not rely on the mis-statements or representations of fact but must satisfy themselves by inspection or otherwise as to their correctness. No employee of Winkworth has authority to make or give any representation or warranty to this property.

Southfields Office 241 Wimbledon Park Road, SW18 5RJ | Tel: 0208 877 1000 | E-mail: Southfields@winkworth.co.uk
winkworth.co.uk