



Glebe Road, Buriton, Petersfield, GU31

OIEO: £400,000 Freehold

In the popular village of Buriton, a semi-detached family home with a garden and parking.

NO ONWARD CHAIN.

Three bedrooms, wet room, sitting room, kitchen, dining room, conservatory, garden and parking.

EPC Rating: "C" (69).

Winkworth

for every step...

winkworth.co.uk/Petersfield 01730 267274



DESCRIPTION

The property is a semi-detached family home with brick elevations under a tiled roof and accommodation over two floors. The layout, which is well-proportioned can be seen in the floorplan and of particular note are the large windows ensuring light flows through the accommodation. The house has been loved over the years and is neutrally presented with recently fitted carpets in some of the rooms and a newly installed kitchen which would enable an incoming purchaser to move in immediately. The property is being sold with no onward chain and an internal viewing is strongly recommended.



LOCATION

The property is situated in the picturesque village of Buriton. Buriton boasts a number of amenities including a nursery school, primary school, a church, village hall, two pubs and a pond. Further amenities can be found in Petersfield, approximately 3 miles to the north where there is a bustling town centre. Shops include Waitrose, M&S Food, Tesco and there are numerous boutiques, cafes and further shops. The train station provides a direct service to London Waterloo to the north (in approximately an hour) and Portsmouth to the south. The town has many active clubs and societies with golf available at Petersfield and Liphook, horse and motor racing at Goodwood, polo at Cowdray Park and sailing along the South Coast. There are many popular schools in the area including Churcher's College, Bedales, Ditcham Park and The Petersfield School.

Services: Mains gas, electricity, water and drainage.

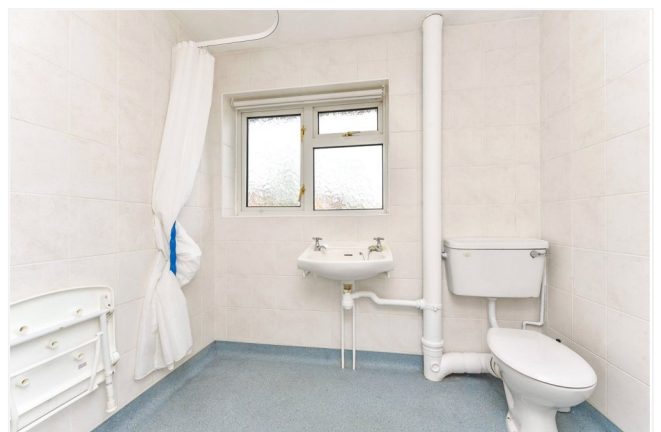
Ref: AB/220018/2

LOCAL AUTHORITY

East Hampshire District Council, Petersfield

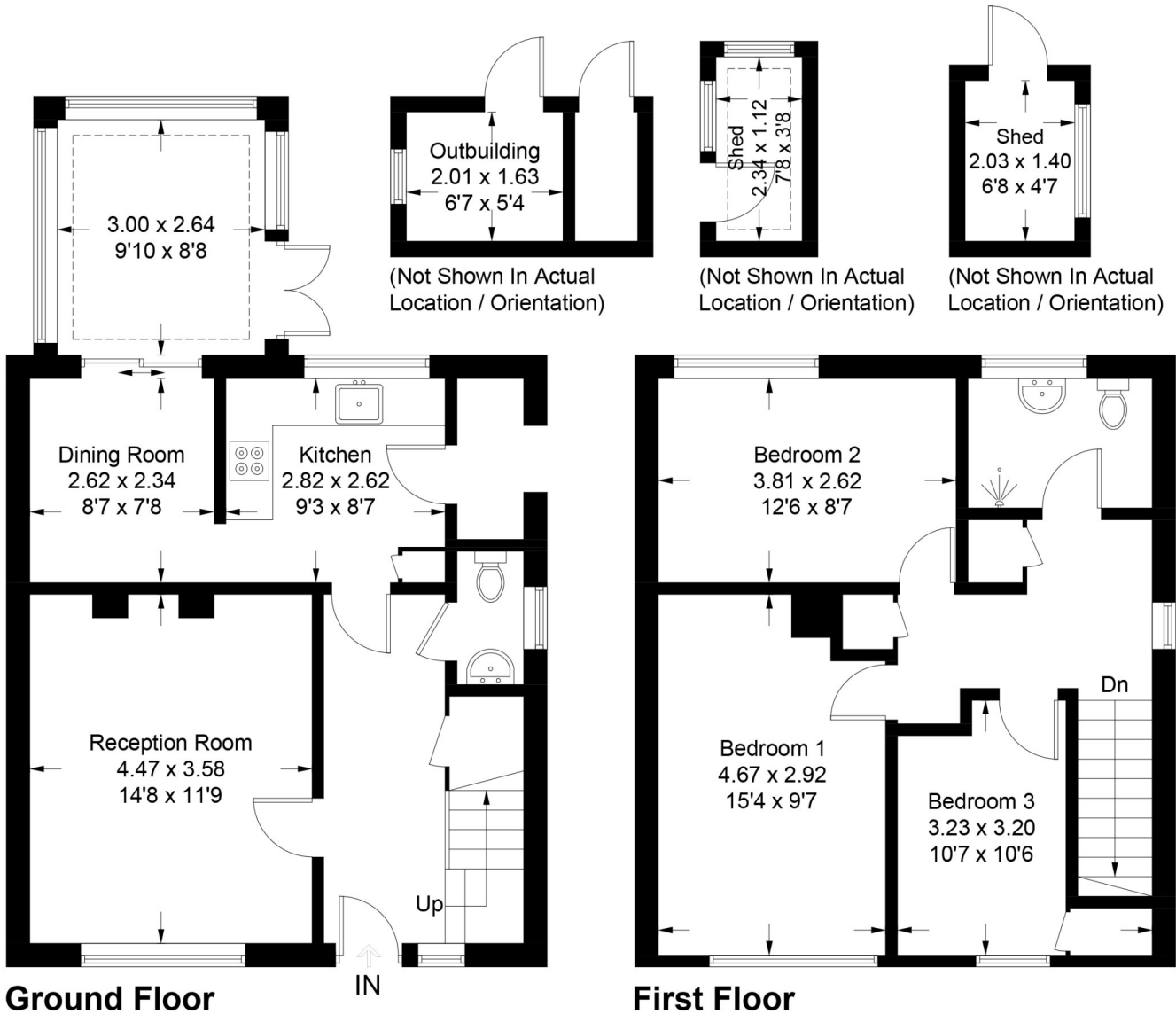
DIRECTIONS

From Petersfield, proceed in a southerly direction down The Causeway. At the roundabout linking to the A3, turn left towards Buriton and follow the country lane into the village. On reaching The Nest Hotel and Restaurant, turn left into Petersfield Road and then take the first turning on your left into Glebe Road. Follow the road around the corner to the right and the house is situated immediately on your left hand side.



Glebe Road, GU31

Approximate Gross Internal Area = 100.7 sq m / 1084 sq ft
 Outbuilding / Sheds = 10.3 sq m / 111 sq ft
 Total = 111 sq m / 1195 sq ft



PRODUCED FOR WINKWORTH ESTATE AGENTS.

Whilst every attempt has been made to ensure the accuracy of the floorplan, measurements of doors, windows and rooms are approximate. These plans are for representation purposes only as defined by RICS Code of Measuring Practice and used as such by any prospective purchaser. Created by Emzoo Marketing 2023.

Under the Consumer Protection from Unfair Trading Regulations 2008 (CPR), these Particulars are a guide and act as information only. All details are given in good faith and are believed to be correct at time of printing. Winkworth give no representation as to their accuracy and potential purchasers or tenants must satisfy themselves by inspection or otherwise as to their correctness. No employee of Winkworth has authority to make or give any representation or warranty in relation to this property.