



CORRINGWAY, LONDON, W5

£1,750,000 FREEHOLD

EPC Band: D
Council Tax Band: H

Ealing & Acton | 0208 896 0123 | ealing@winkworth.co.uk

Winkworth

for every step...

winkworth.co.uk



DESCRIPTION:

Presenting an exquisite two-story detached residence in the sought-after Haymills Estate, boasting two spacious reception rooms and elegant wooden flooring throughout.

Previously granted planning consent for an expansive ground-floor extension and a fifth bedroom with an ensuite bathroom, which has lapsed but is currently undergoing renewal by the seller.

The ground level features an inviting entrance hall, two sizable reception rooms, a fully equipped kitchen, and a convenient cloakroom. Upstairs, discover four generous double bedrooms, a family bathroom, a luxurious ensuite, and a separate WC.

Outside, a sprawling rear lawn measuring approximately 73 feet awaits, complemented by a modest front garden and parking space for two vehicles.

Nestled within the desirable Hanger Hill East (Haymills Estate) conservation area, this residence offers access to North Ealing and West Acton stations, as well as local shopping amenities. Ealing Broadway station, with its Elizabeth Line connection and vibrant town center, is within easy reach. Convenient road links include the A40, A4, M4, and M40 motorways. The property is also well-positioned for several esteemed schools, such as Montpelier Primary, The Japanese School, Notting Hill & Ealing High, Durston House, North Ealing Primary, Ellen Wilkinson High, Ada Lovelace CofE High, among others.

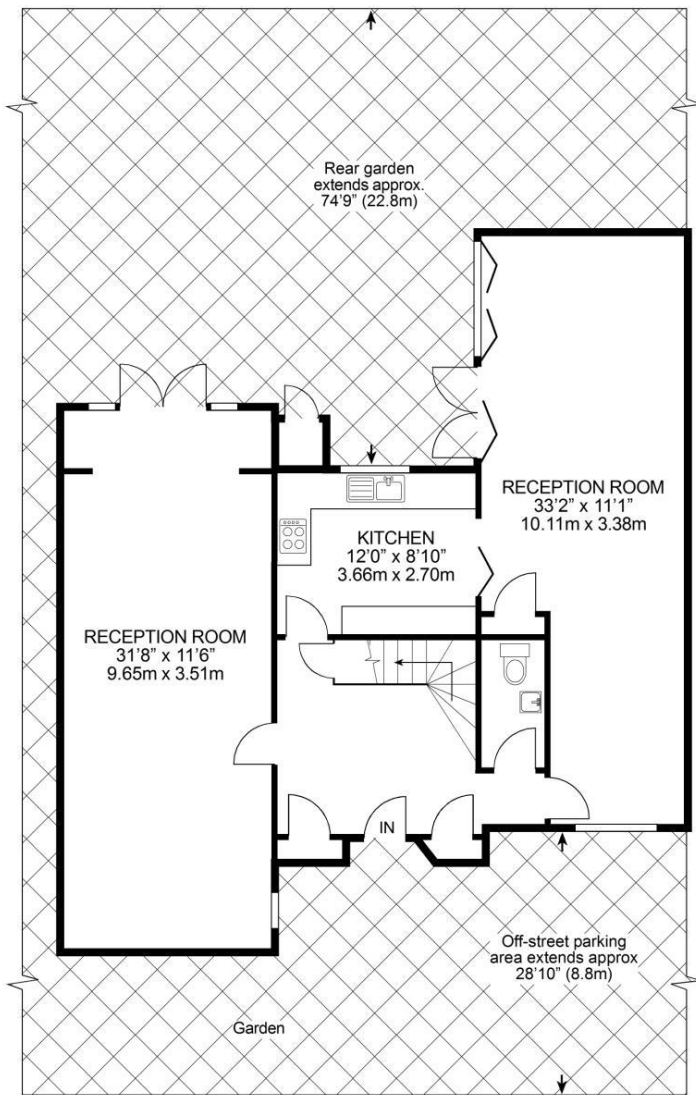
Winkworth

for every step...

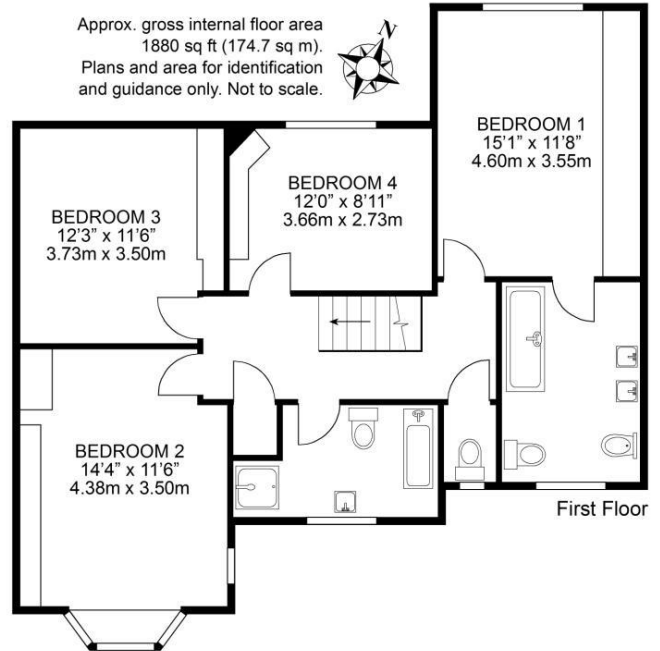


Winkworth

for every step...



Ground Floor



This floorplan is for illustration purposes only and is not to scale. The position and size of doors, windows, appliances and other features are approximate.

Score	Energy rating	Current	Potential
92+	A		
81-91	B		
69-80	C		72 C
55-68	D	58 D	
39-54	E		
21-38	F		
1-20	G		

Ealing & Acton | 0208 896 0123 | ealing@winkworth.co.uk



for every step...

winkworth.co.uk

Winkworth wishes to inform prospective buyers and tenants that these particulars are a guide and act as information only. All our details are given in good faith and believed to be correct at the time of printing but they don't form part of an offer or contract. No Winkworth employee has authority to make or give any representation or warranty in relation to this property. All fixtures and fittings, whether fitted or not are deemed removable by the vendor unless stated otherwise and room sizes are measured between internal wall surfaces, including furnishings.