



Flat 51 Lockinge House

A stunning one bedroom, top floor racecourse apartment.

This fantastic apartment boasts a great living space and benefits from a balcony that has views over the racecourse.

As you enter this property you are greeted with an extensive hallway, perfect for hanging jackets or storing away shoes. The hallway takes you all the way through to the living room which comprises of a fully fitted kitchen, dining space and lounge space.

We then walk through to the bedroom which not only has fantastic built in wardrobe space but is large enough for a double bed plus freestanding furniture.

Finally the apartment comes with a stunning family bathroom fitted with heated towel rail.

This property comes with one allocated parking space.

EPC: B

West Berkshire Council Tax Band: C



Winkworth

AT A GLANCE

- 572 Square feet/ 53 Square metres
- Double Bedroom
- Bathroom
- Open Plan Living Space
- Kitchen With Appliances
- Balcony
- Allocated Parking Space

UTILITIES

Electric central Heating
Mains Water
No known mobile or broadband issues.

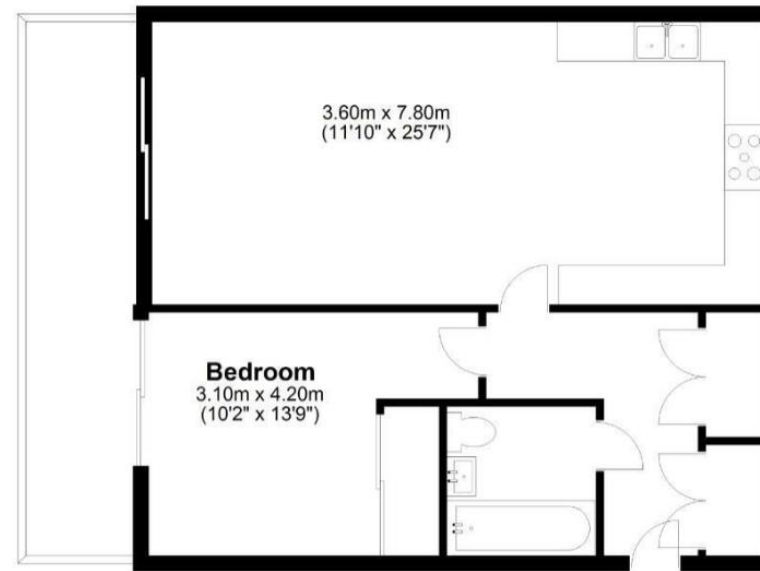
LEASEHOLD DETAILS

Block Managers: Remus
Approx 118 years lease remaining.
Ground rent £185 pa
Service Charge £1875 approx for 2023

Copy lease available on request.

Ground Floor

Approx. 53.1 sq. metres (572.1 sq. feet)



Newbury Office

43 Northbrook Street, Newbury, Berkshire RG14 1DT
01635 552552 | newbury@winkworth.co.uk

winkworth.co.uk/newbury

Winkworth

See things differently.