



STILE HALL GARDENS, W4
£1,100,000 FREEHOLD

FOUR BEDROOM EDWARDIAN HOUSE IN NEED OF MODERNISING.

Chiswick | 020 8994 7096 | chiswick@winkworth.co.uk

Winkworth

for every step...

winkworth.co.uk



DESCRIPTION:

This early Edwardian house has been owned by the same family for nearly 50 years. Retaining an abundance of period style features plus a large southerly aspect rear garden.

The house has a brand new roof but does require internal modernising and the discerning buyers will create a very fine family home.

Currently offering four good size bedrooms and a family bathroom to the first floor with a good size entrance hall and two reception rooms on the ground floor plus a kitchen/family room, utility room and separate wc. There is a very usable cellar with good head height.

The house offers scope to further extend subject to the usual planning consents.

Stile Hall Gardens is perfectly placed for a host of excellent schools. Kew Bridge station (Zone 3) and Gunnersbury Tube (District Line) and Overground (Zone 3) are both less than half a mile away. Close to the banks of the River Thames, beautiful Kew Gardens and Chiswick High Road with its excellent array of shops and eateries.

Offered with no onward chain.

Council tax: Band G - Hounslow Borough

ACCOMMODATION

Freehold

4 Bedrooms

2 Reception Rooms

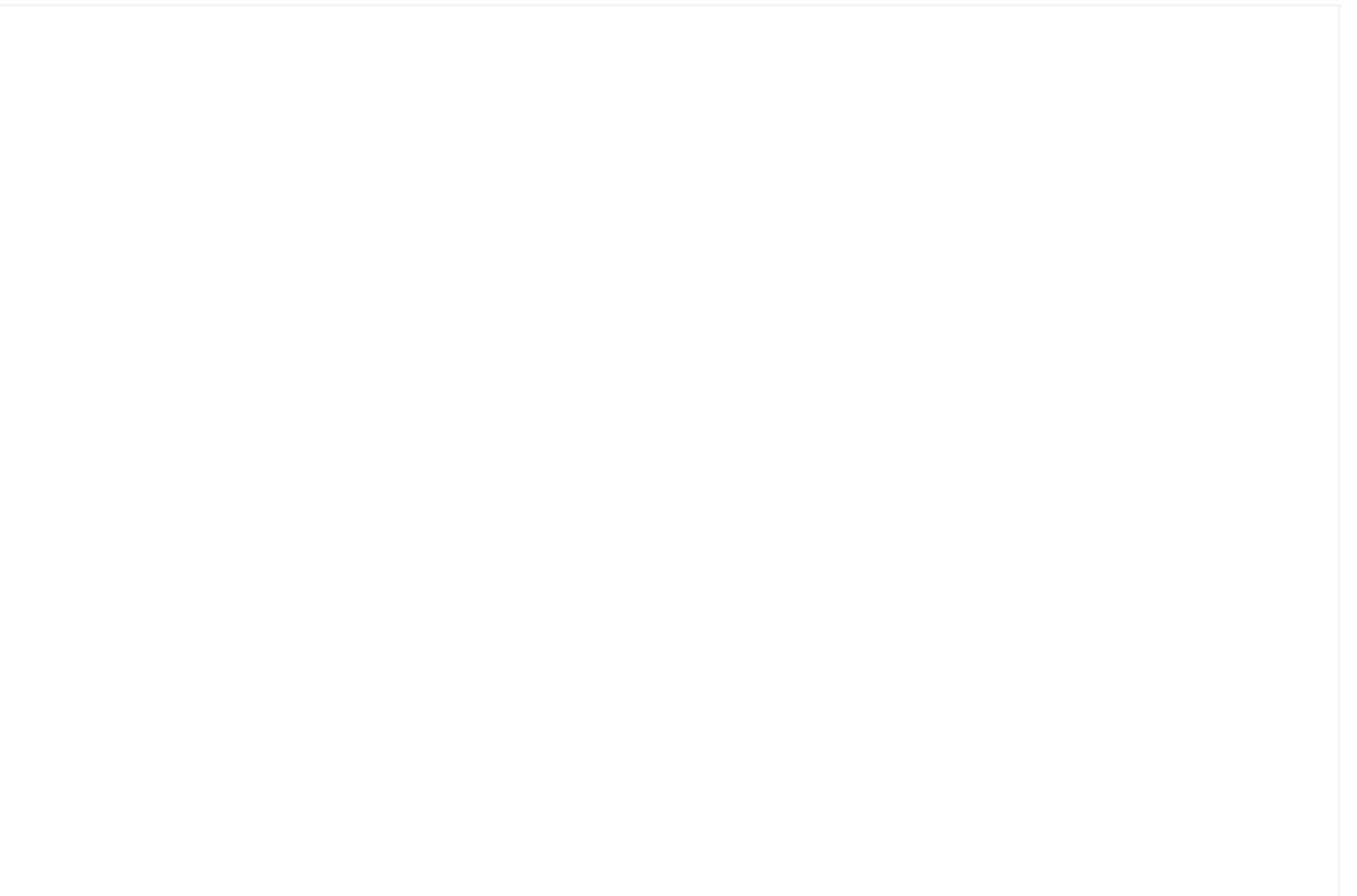
1 Bathroom, House

Terraced, Garden

Residents Parking

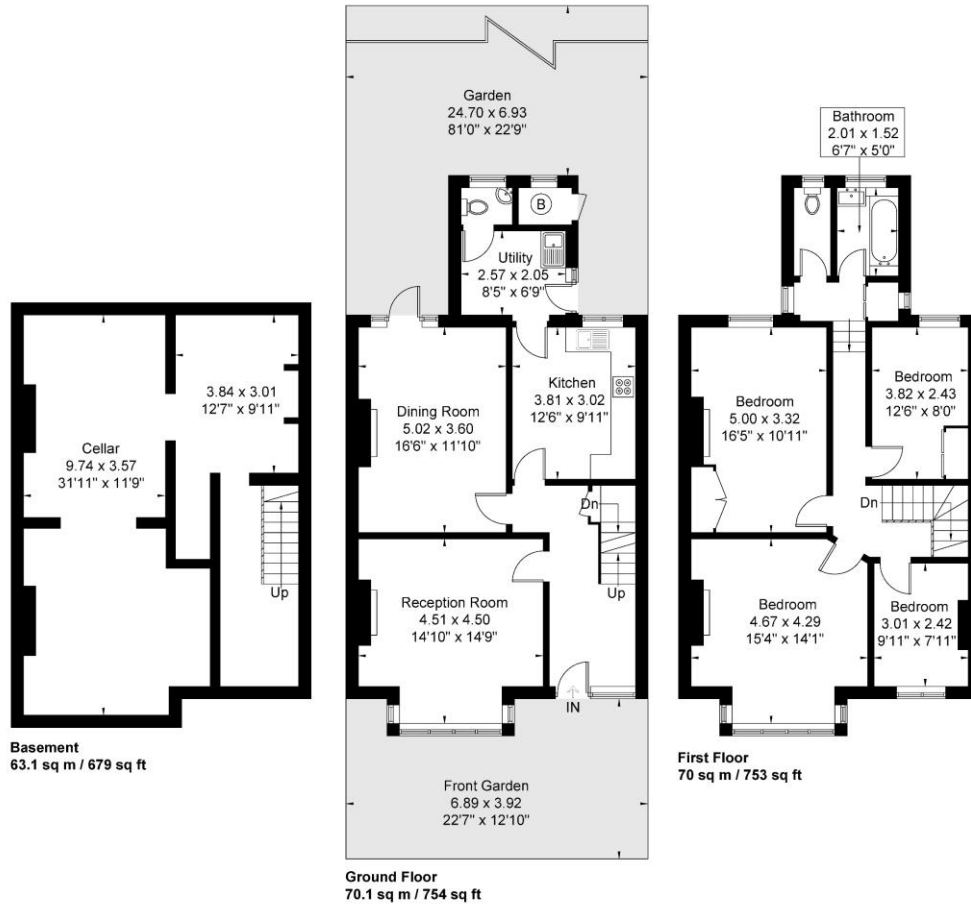
Period, Town/City

Unmodernised decoration



Stile Hall Gardens

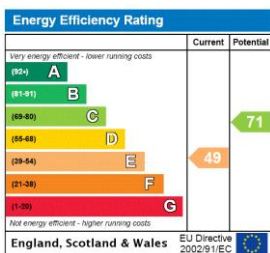
Approximate Gross Internal Area = 203.2 sq m / 2186 sq ft



Winkworth

Although every attempt has been made to ensure accuracy, all measurements are approximate. The floorplan is for illustrative purposes only and not to scale.
© www.perspective.co.uk

This floorplan is for illustration purposes only and is not to scale. The position and size of doors, windows, appliances and other features are approximate.



Chiswick | 020 8994 7096 | chiswick@winkworth.co.uk

Winkworth

for every step...

winkworth.co.uk

Winkworth wishes to inform prospective buyers and tenants that these particulars are a guide and act as information only. All our details are given in good faith and believed to be correct at the time of printing but they don't form part of an offer or contract. No Winkworth employee has authority to make or give any representation or warranty in relation to this property. All fixtures and fittings, whether fitted or not are deemed removable by the vendor unless stated otherwise and room sizes are measured between internal wall surfaces, including furnishings.