



MAYGROVE ROAD, WEST HAMPSTEAD, LONDON, NW6 OFFERS IEO £500,000 SHARE OF FREEHOLD

A very well presented two double bedroom apartment situated on the second floor of this period property. The beautiful apartment consists of a reception room with large separate kitchen, two double bedrooms, one bathroom and private terrace.

Maygrove Road is superbly situated for excellent shopping, restaurants, bars and transport links of West End Lane (which includes Thameslink, Jubilee and Overground), in addition to numerous local parks and playgrounds There is also the popular farmers market which is held locally every Saturday.

Two Double Bedrooms | Bathroom | Reception Room | Separate Kitchen | Private Terrace | Share of Freehold

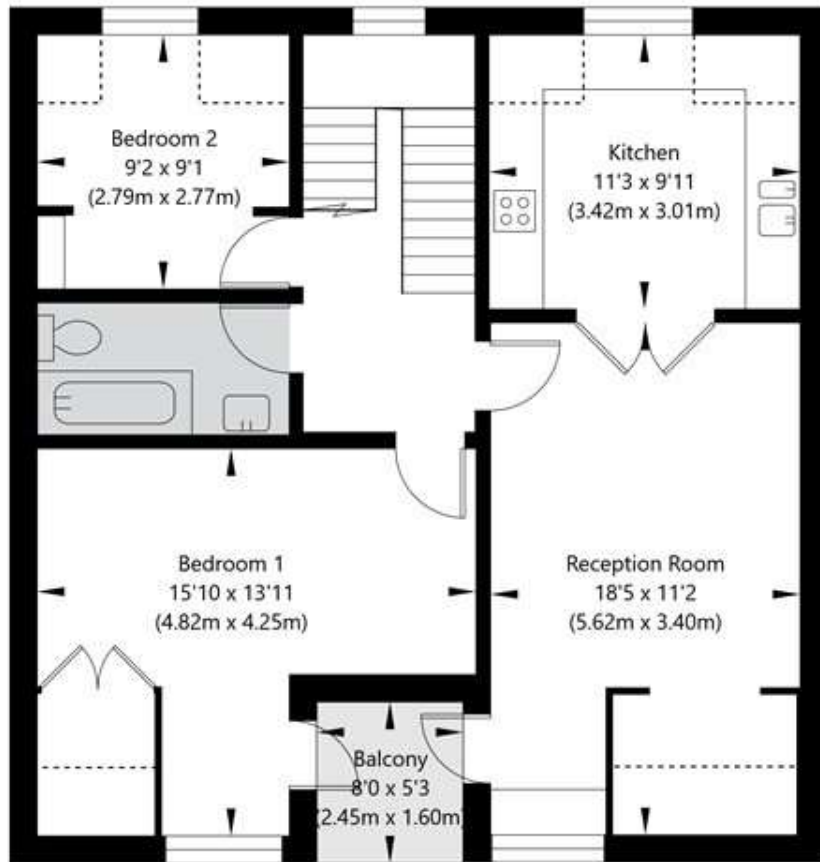
Winkworth

for every step...

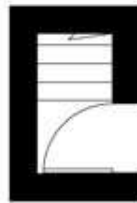
[winkworth.co.uk/west-hampstead](https://www.winkworth.co.uk/west-hampstead)



Maygrove Road, London NW6 2ED



Second Floor
GROSS INTERNAL FLOOR AREA
APPROX. 69.71 SQ M / 750 SQ FT

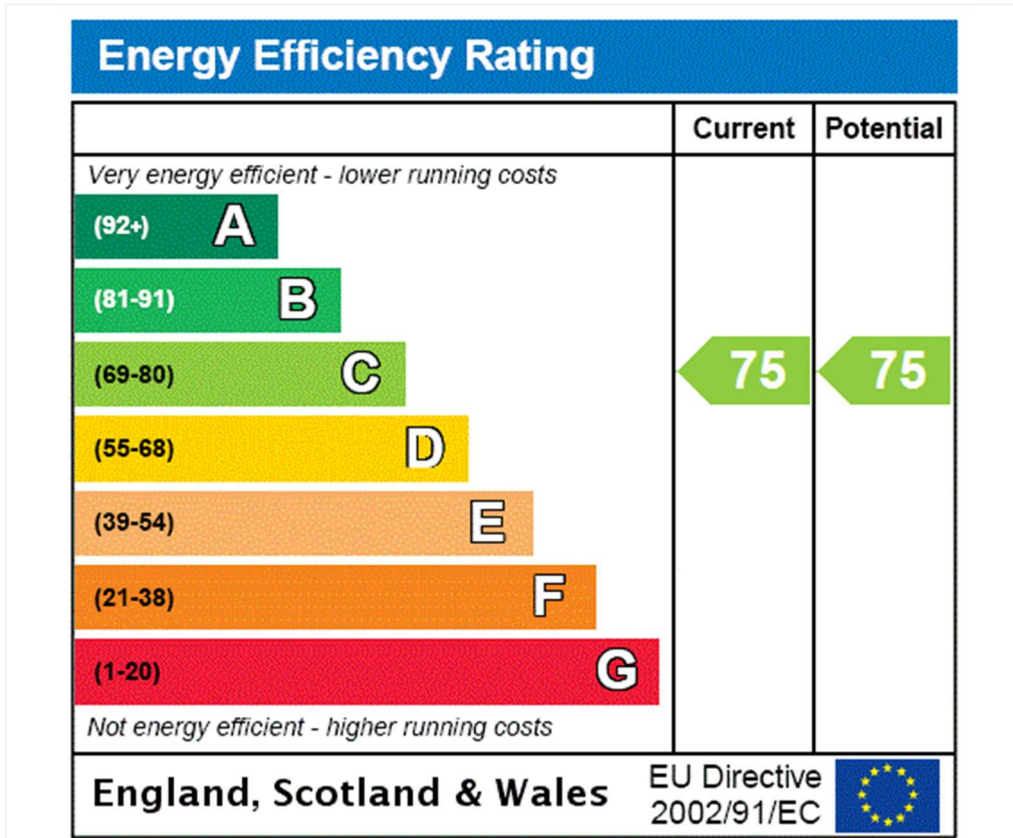


First Floor Entrance
GROSS INTERNAL FLOOR AREA
APPROX. 1.28 SQ M / 14 SQ FT

APPROXIMATE GROSS INTERNAL FLOOR AREA 70.99 SQ M / 764 SQ FT
APPROXIMATE GROSS INTERNAL FLOOR AREA EXCLUDING RESTRICTED HEIGHT 65.67 SQ M / 707 SQ FT

THIS FLOOR PLAN IS FOR ILLUSTRATIVE PURPOSES ONLY AND
SHOULD BE USED FOR THIS PURPOSE BY PROSPECTIVE APPLICANTS AS ITS NOT TO SCALE.

(c) AMBERSHORE PIX LIMITED / PHOTO - VIDEO - FLOOR PLANS / 0800 999 1577 / WWW.AMERSHOREPIX.CO.UK



Tenure: Share of Freehold
Term: Expires - 25/12/2117
Service Charge: Ad Hoc
Council Tax Band: D

Notes: Images have been virtually staged using CGI and are for illustrative purposes only. They are intended to convey the concept and vision for the property. They are for guidance only, and may alter and do not necessarily represent a true and accurate depiction of the finished property.

Where no figures are shown, we have been unable to ascertain the information. All figures that are shown were correct at the time of printing.

Where no figures are shown, we have been unable to ascertain the information. All figures that are shown were correct at the time of printing. These particulars are not an offer or contract, nor part of one. You should not rely on statements by Winkworth in the particulars or by word of mouth or in writing "information" as being factually accurate about the property, its condition or its value. Winkworth does not have any authority to make any representations about the property, and accordingly any information given is entirely without responsibility on the part of the agents, seller(s) or lessor(s). These particulars are prepared on the basis of the information supplied by our client and are a rough guide for information only. The photographs show only certain parts of the property. We are not able to check all of the information and therefore are unable to guarantee accuracy. All interested parties are therefore advised to undertake all necessary inspections and checks that they deem appropriate. Where displayed, the square footage is taken from the floor plans, which are created by an independent supplier. These measurements are approximate and included for illustrative purposes only. The measurements may vary. Winkworth does not make any representation as to the accuracy of these measurements and you should seek to verify them for yourself. Winkworth accept no liability for any loss you may suffer if you rely on these measurements. All fixtures and fittings, whether fitted or not are deemed removable by the vendor unless stated. Any reference to alterations to, or use of, any part of the property does not mean that any necessary planning, building regulations or other consent has been obtained. Amenities and appliances have not been tested

West Hampstead | 142 West End Lane, London, NW6 1SD | 020 7483 7602

westhampstead@winkworth.co.uk

winkworth.co.uk/west-hampstead



for every step...

Winkworth wishes to inform prospective buyers and tenants that these particulars are a guide and act as information only. All our details are given in good faith and believed to be correct at the time of printing but they don't form part of an offer or contract. No Winkworth employee has authority to make or give any representation or warranty in relation to this property. All fixtures and fittings, whether fitted or not are deemed removable by the vendor unless stated otherwise and room sizes are measured between internal wall surfaces, including furnishings.