



THE ROPE WALK, CANTERBURY, CT1
£1,400 PER MONTH

Canterbury | 01227 456 645 | canterbury@winkworth.co.uk



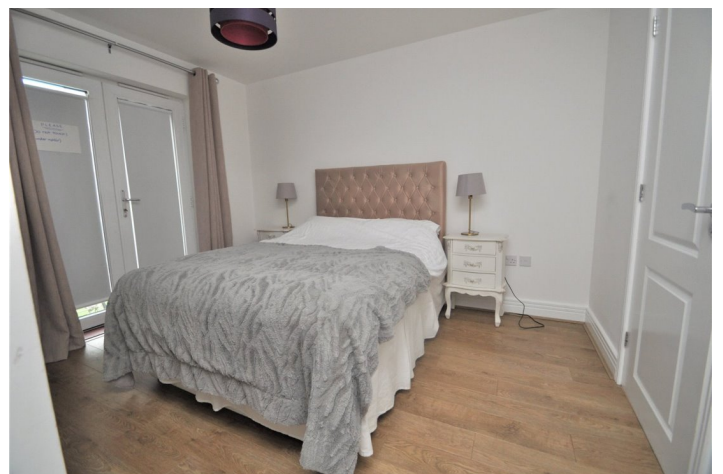
winkworth.co.uk

See things differently



DESCRIPTION:

This first floor apartment is situated overlooking the riverside development just a short stroll from the heart of Canterbury's vibrant city centre, but couldn't feel further from the hustle and bustle. With two large bedrooms, spacious, open-plan living area and kitchen, study area, full width balcony and secure underground parking.



Winkworth



Winkworth

Situated in the Rope Walk, which easily accessible by car and affords a pleasant walk to the High Street alongside the River, this stylish development has distinctive cedar-style cladding and glass fronted balconies.

With two sets of bi-fold doors, the balcony is almost entirely open to the spacious living area which also accommodates a dining table and contemporary, high specification kitchen. A study area is tucked away around the corner which provides space for a computer and filing that's not immediately on-show.

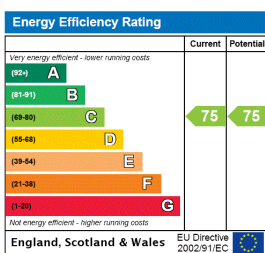
There's no shortage of windows here, and with a southerly aspect, it's an uplifting and bright interior that feels quite unlike many apartments.

A laundry cupboard lies off the hallway which is ideal for hiding away the washing machine and dryer, whilst a second storage cupboard is great for all those other 'bits and pieces' that need a home and would otherwise make a minimalistic apartment look cluttered.

There are two double bedrooms, the master of which includes a large fitted wardrobe, Juliette balcony and en-suite shower room. A second bathroom serves the guest bedroom.

The property has a lovely balcony overlooking the river and also a courtyard terrace garden with plenty of room for a couple of sun loungers. The property includes secure underground parking for one vehicle and lift access.

This floorplan is for illustration purposes only and is not to scale. The position and size of doors, windows, appliances and other features are approximate.



Canterbury | 01227 456 645 | canterbury@winkworth.co.uk



winkworth.co.uk

See things differently

Winkworth wishes to inform prospective buyers and tenants that these particulars are a guide and act as information only. All our details are given in good faith and believed to be correct at the time of printing but they don't form part of an offer or contract. No Winkworth employee has authority to make or give any representation or warranty in relation to this property. All fixtures and fittings, whether fitted or not are deemed removable by the vendor unless stated otherwise and room sizes are measured between internal wall surfaces, including furnishings.