



CHELSEA MANOR GARDENS, SW3  
£875,000 SHARE OF FREEHOLD

A BRIGHT GROUND FLOOR ONE-BEDROOM  
APARTMENT BOASTING DIRECT ACCESS TO  
THE COMMUNAL GARDEN.

Knightsbridge & Chelsea | 0207 589 6616 |  
knightsbridge@winkworth.co.uk

**Winkworth**

for every step...

[winkworth.co.uk](http://winkworth.co.uk)





## DESCRIPTION:

A bright ground floor one-bedroom apartment boasting direct access to the communal garden. Recently redecorated, it features a modern integrated kitchen, a spacious double bedroom with ample storage, an en-suite bathroom, a guest cloakroom, and a generously sized reception room with views and direct access to the communal gardens.

The property also benefits from a small demised patio area and an on-site porter and qualification for an RBKC parking permit.

Kings Court South is a smart and well-maintained mansion block off Chelsea's King's Road and discreetly accessed via Chelsea Manor Street. The nearest underground station is at Sloane Square (Circle and District Line).

## AT A GLANCE

- Share of Freehold
- Direct garden access
- Spacious double bedroom
- Good storage
- Prime location





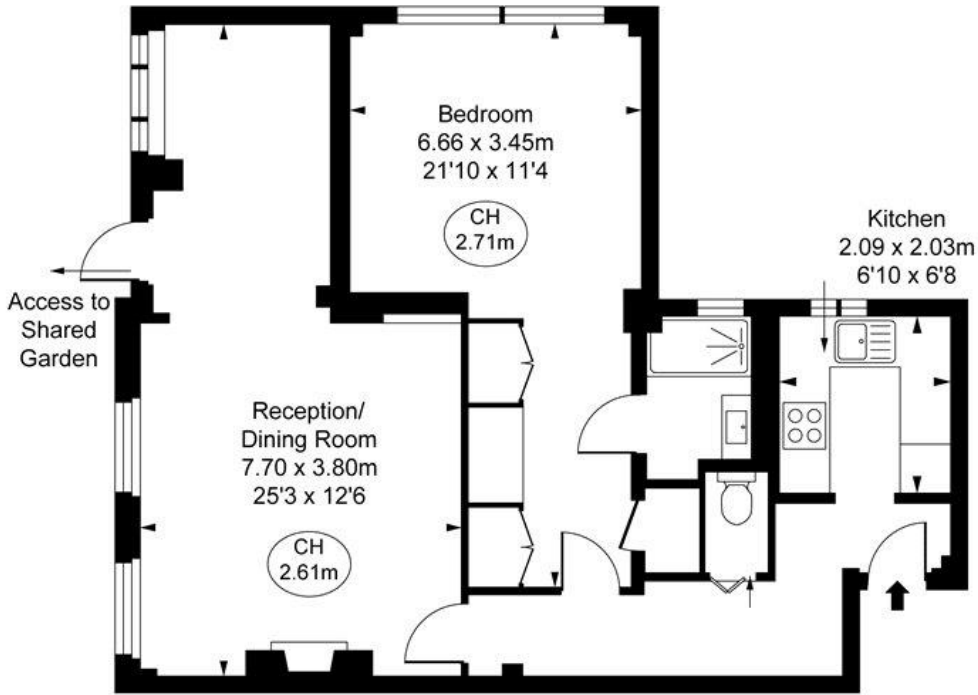




# Kings Court South, SW3

Approximate Gross Internal Area  
58.91 sq m / 634 sq ft

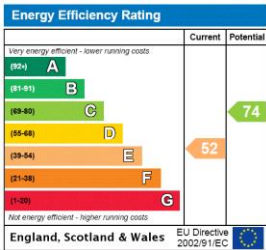
( CH = Ceiling Heights )



Ground Floor

This plan is not to scale. It is for guidance and not for valuation purposes.  
All measurements and areas are approximate only, and have been prepared in accordance with the current edition of the RICS Code of Measuring Practice.  
© Fulham Performance

This floorplan is for illustration purposes only and is not to scale. The position and size of doors, windows, appliances and other features are approximate.



**Tenure:** Share of Freehold  
**Term:** 982 year and 9 months  
**Service Charge:** £7700 per annum  
**Ground Rent:** Peppercorn  
**Council Tax Band:** E

Where no figures are shown, we have been unable to ascertain the information. All figures that are shown were correct at the time of printing.



Knightsbridge & Chelsea | 0207 589 6616 | knightsbridge@winkworth.co.uk

for every step...

winkworth.co.uk

Winkworth wishes to inform prospective buyers and tenants that these particulars are a guide and act as information only. All our details are given in good faith and believed to be correct at the time of printing but they don't form part of an offer or contract. No Winkworth employee has authority to make or give any representation or warranty in relation to this property. All fixtures and fittings, whether fitted or not are deemed removable by the vendor unless stated otherwise and room sizes are measured between internal wall surfaces, including furnishings.