



24 JAGO COURT

NEWBURY RG14 7DX

An attractive and spacious two bedroom second floor apartment located in the Jago Court development.

NO ONWARD CHAIN

The property has been excellently maintained and is in fantastic condition throughout. The accommodation comprises of communal entrance with security intercom system, spacious entrance hallway with utility cupboard and plumbing for washing machine.

The kitchen is fully fitted with integrated dishwasher, oven, hob, extractor and fridge/freezer. The kitchen is open plan to the lounge with space for both living and dining.

There are two double rooms with en-suite to the master and built in storage. There is also a separate family bathroom.

One parking space.



Winkworth

AT A GLANCE

- 762 Square feet/ 70 Square metres
- Two bedrooms
- Bathroom
- *NO ONWARD CHAIN*
- Kitchen
- Sitting/dining room
- One parking space
- Second floor

UTILITIES

EPC B
West Berkshire Council Tax C
Electric Heating
Mains Water and Drainage
Mobile Signal and Broadband: Full coverage

LEASEHOLD DETAILS

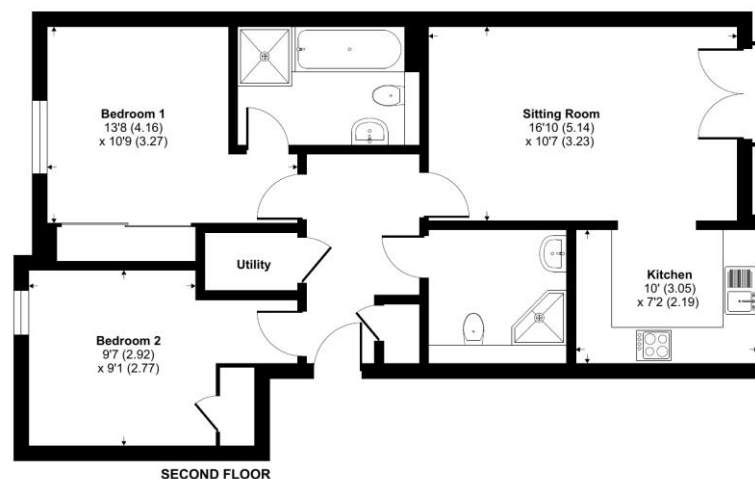
Approx 106 years remaining
Ground rent approx £200 pa
Service charge approx £1160 pa
Lease available on request.

SITUATION

Situated to the south of Newbury within walking distance of Newbury retail Park, Tesco's superstore, medical centre with dispensing chemist, David Lloyd recreational centre and Newbury Rugby club.

Jago Court, Newbury, RG14

Approximate Area = 762 sq ft / 70.7 sq m
For identification only - Not to scale



Floor plan produced in accordance with RICS Property Measurement Standards incorporating International Property Measurement Standards (IPMS2 Residential). © ntwcom 2024. Produced for Winkworth. REF: 1136457

Winkworth



Newbury Office

43 Northbrook Street, Newbury, Berkshire RG14 1DT
01635 552552 | newbury@winkworth.co.uk

winkworth.co.uk/newbury

Winkworth

See things differently.