



**REDBOURNE AVENUE, FINCHLEY, LONDON, N3
OFFERS IN EXCESS OF £500,000 SHARE OF FREEHOLD**

**A SPACIOUS WELL-PRESENTED TWO BEDROOM
MAISONETTE WITH PRIVATE SECTION OF
GARDEN SET IN A PRIME N3 LOCATION**

Finchley | 020 8349 3388 | finchley@winkworth.co.uk



DESCRIPTION:

We are pleased to offer this first floor maisonette set in a prime residential turning off Ballards Lane, ideally located for Victoria Park, local shopping facilities and transport links, including Finchley Central underground station. The property comprises of a spacious reception room, two bedrooms, modern fitted kitchen and bathroom. Further benefits include a large private section of garden, loft space for storage, on road parking (permit required) and a share of the freehold. An internal viewing is highly recommended!

TENURE:

Share of Freehold

Service Charge: Approx. £300.00 per annum

Building Insurance: Approx. £273.00 per annum

COUNCIL TAX:

Band D

AT A GLANCE

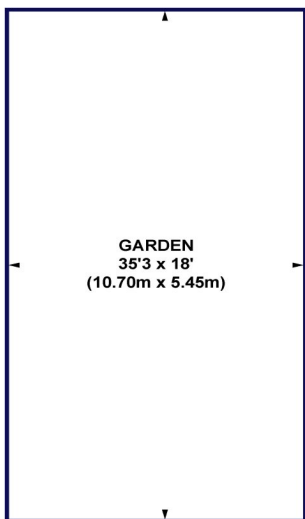
- First floor maisonette
- Prime residential turning
- Spacious reception room
- Modern fitted kitchen & bathroom
- Two bedrooms
- Private section of garden
- Share of freehold



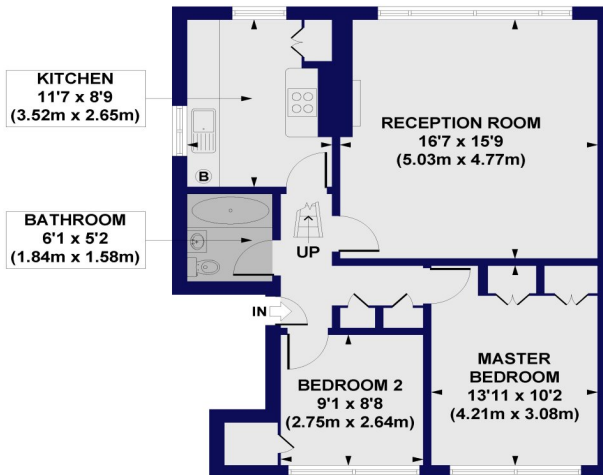


Redbourne House, Redbourne Avenue , N3

Approx. Gross Internal Floor Area 697 sq. ft / 64.75 sq. m



GROUND FLOOR



FIRST FLOOR
GROSS INTERNAL
FLOOR AREA 697 SQ FT

All measurements of walls, doors, windows, fittings and appliances, including their size and location, are shown as standard sizes and do not constitute any warranty or representation by the seller, their agent or CP Creative. Any intending purchaser must satisfy himself by inspection or otherwise as to the correctness of the information contained in these plans. This plan is for illustrative purposes only and should be used as such by any prospective purchasers.

Winkworth

